

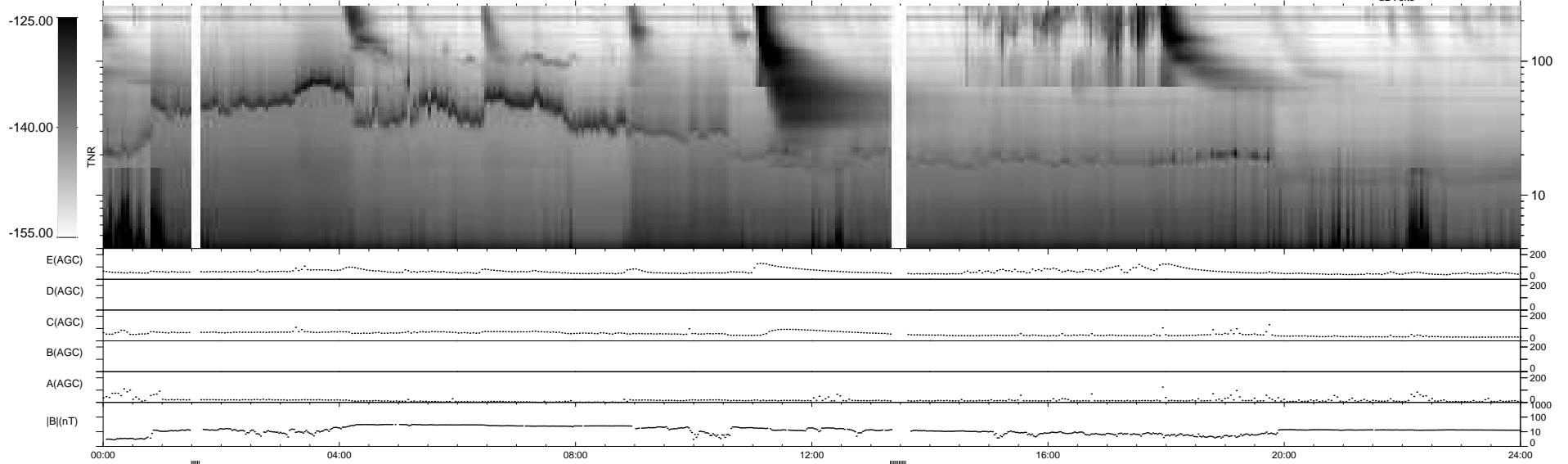
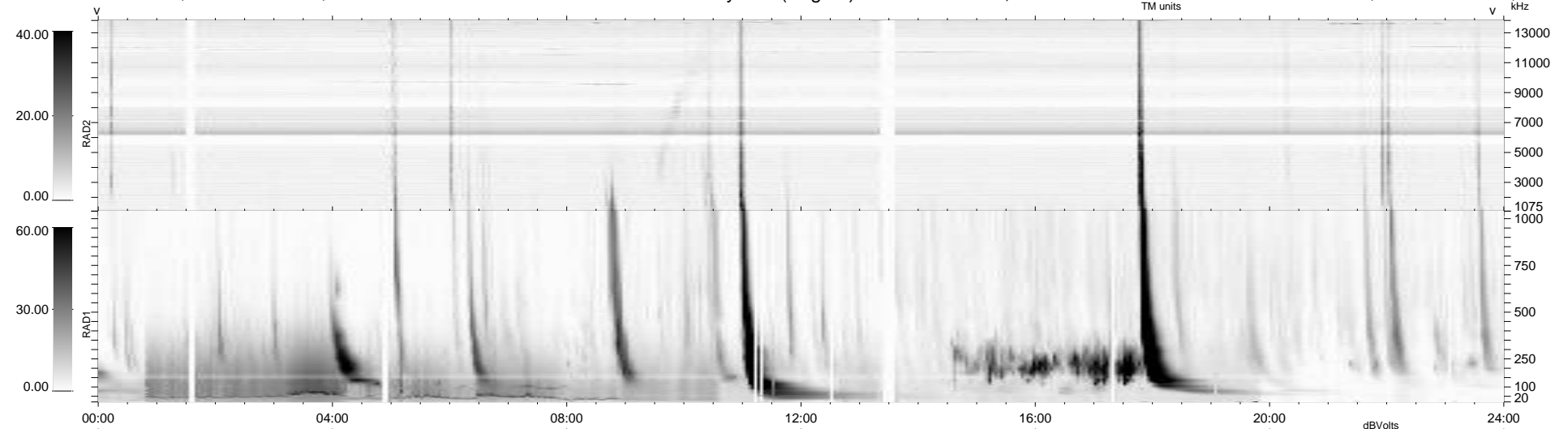
23 bad + 899 good MF/939MF projected (95%) - 17 missing MFs  
 Avg interval = 180 secs  
 Re = -196.79 (195.26, 14.35, -19.89 GSE)

windlib 2.0b

LZ version = v01

### WIND/WAVES Summary Plot (Page 1) for 18-FEB-2011, DOY = 49

DAILY 2011-02-19 16:35:06  
 Re = 197.19 (195.38, 17.87, -19.81 GSE)



RAD2  
 Antenna Ey  
 Mode LIN(1)  
 SUM/SEP SEP  
 Toggle OFF

RAD1  
 Antenna Ex  
 Mode LIS(2/4)  
 SUM/SEP SUM  
 Toggle OFF

TNR  
 Antenna ExEy  
 Mode A-32  
 Sweep ACE