

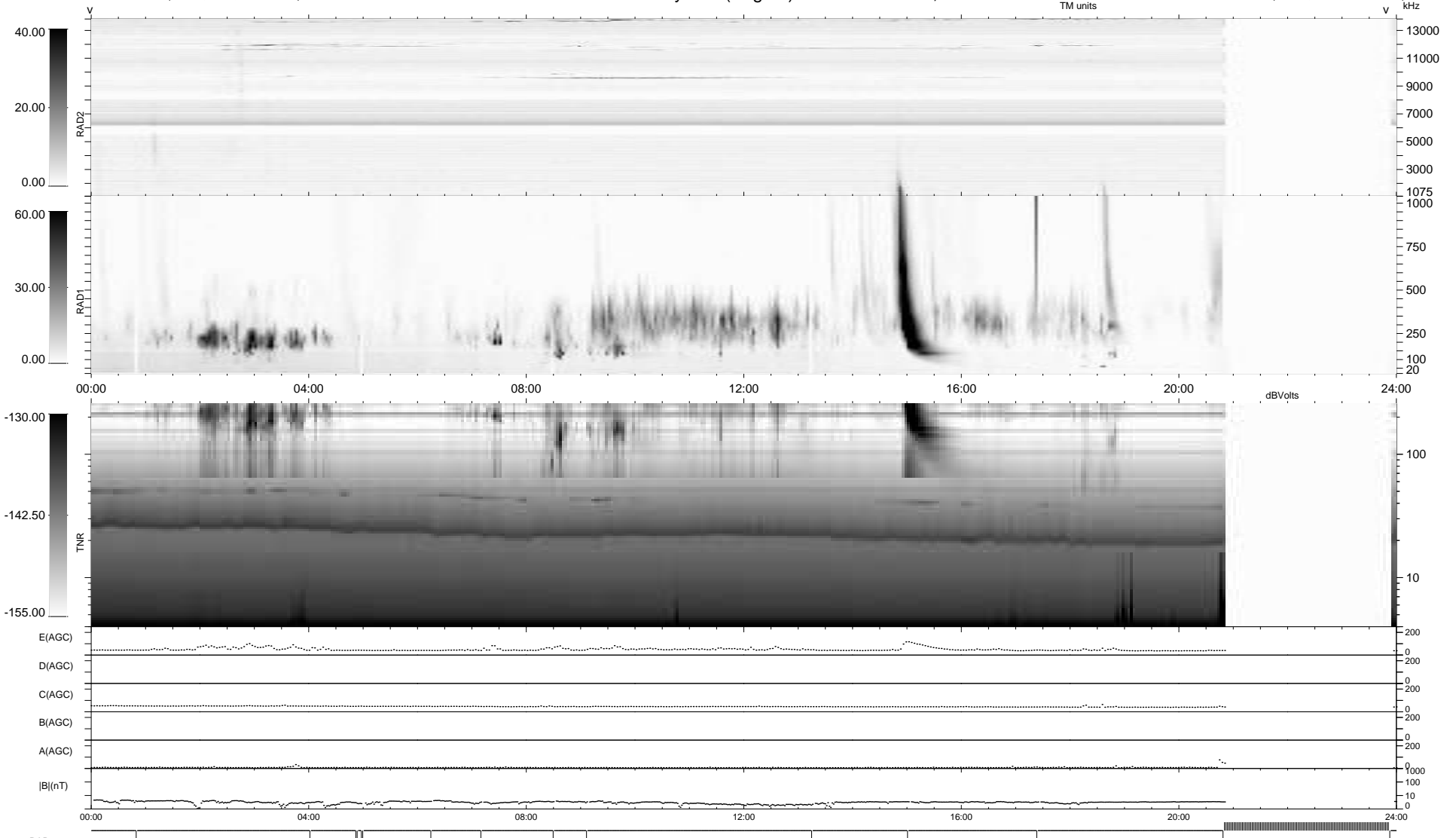
15 bad + 805 good MF/939MF projected (85%) - 119 missing MFs  
 Avg interval = 180 secs  
 Re = - 196.63 (195.51, -7.56, -19.56 GSE)

windlib 2.0b

LZ version = v01

### WIND/WAVES Summary Plot (Page 1) for 12-FEB-2011, DOY = 43

DAILY 2011-02-14 00:36:04  
 Re = 196.40 (195.37, -3.87, -19.70 GSE)



```

RAD2
Antenna Ey .....
Mode LIN(1) .....
SUM/SEP SEP .....
Toggle OFF .....

RAD1
Antenna Ex .....
Mode LIS(2,4) .....
SUM/SEP SUM .....
Toggle OFF .....

TNR
Antenna ExEy .....
Mode A-32 .....
Sweep ACE .....
  
```