

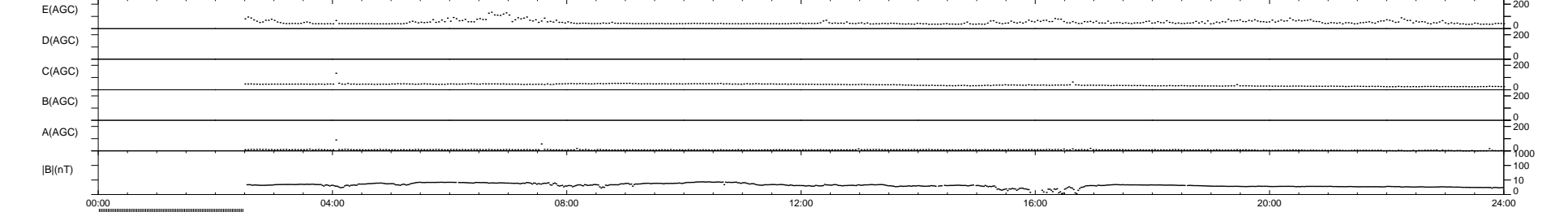
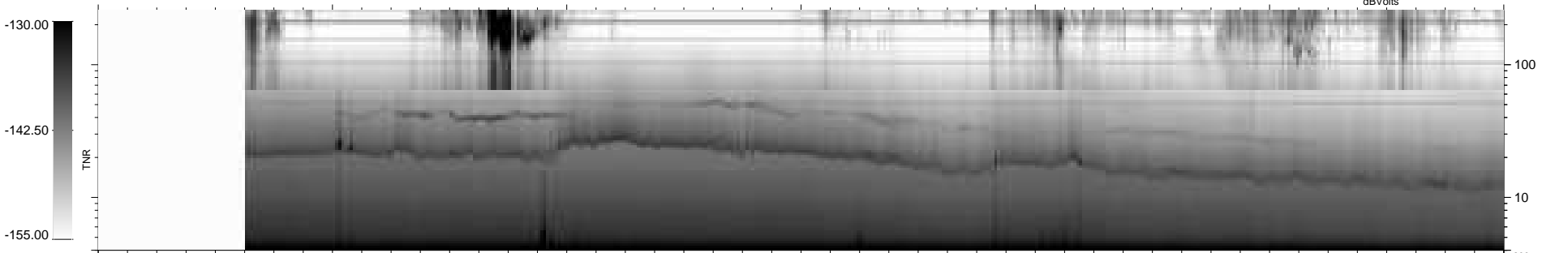
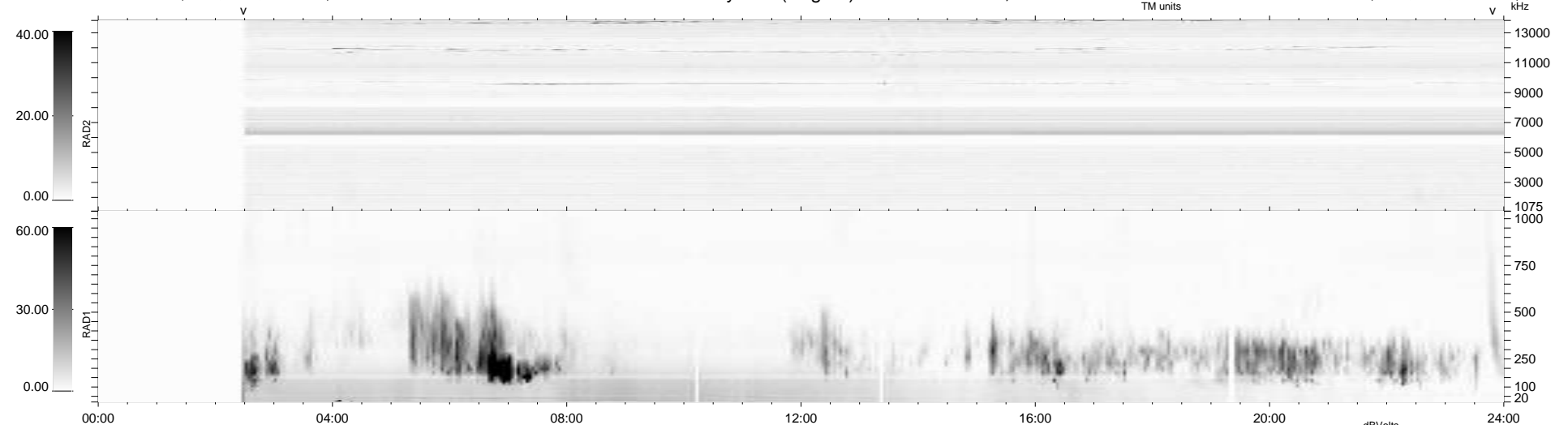
10 bad + 832 good MF/939MF projected (88%) - 97 missing MFs
Avg interval = 180 secs
Re = 202.83 (197.32, -43.98, -16.40 GSE)

windlib 2.0b

LZ version = v01

WIND/WAVES Summary Plot (Page 1) for 02-FEB-2011, DOY = 33

DAILY 2011-02-04 10:35:06
Re = 202.05 (197.16, -40.87, -16.80 GSE)



RAD2 Antenna Mode SUM/SEP Toggle
RAD1 Antenna Mode SUM/SEP Toggle
TNR Antenna Mode Sweep