

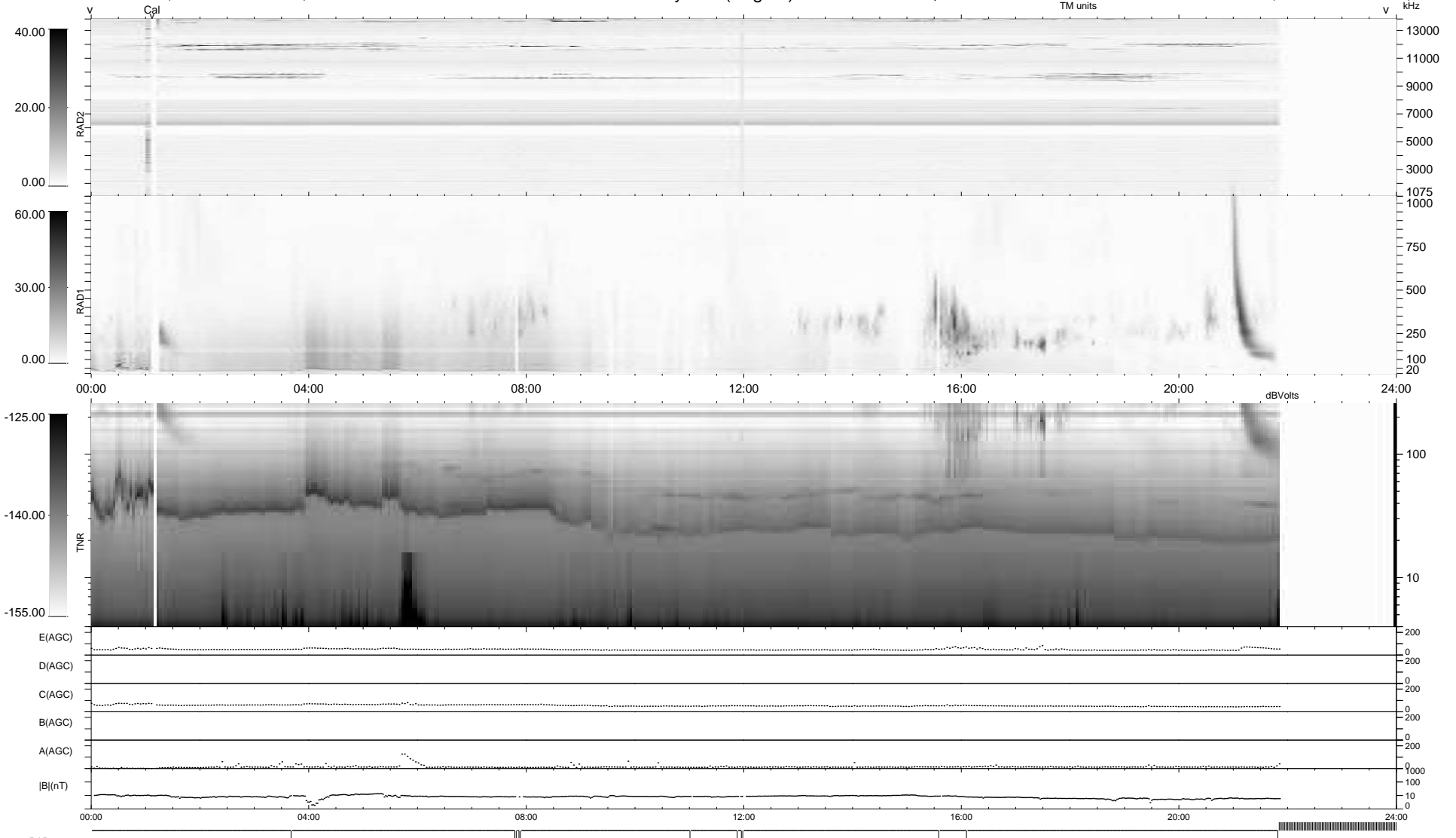
12 bad + 842 good MF/939MF projected (89%) - 85 missing MFs  
 Avg interval = 180 secs  
 Re = - 203.82 (197.51, -47.77, -15.87 GSE)

windlib 2.0b

LZ version = v01

### WIND/WAVES Summary Plot (Page 1) for 01-FEB-2011, DOY = 32

DAILY 2011-02-02 21:35:06  
 Re = 202.92 (197.34, -44.37, -16.34 GSE)



RAD2  
 Antenna Ey .....  
 Mode LIN(1) .....  
 SUM/SEP SEP .....  
 Toggle OFF .....  
 RAD1  
 Antenna Ex .....  
 Mode LIS(2,4) .....  
 SUM/SEP SUM .....  
 Toggle OFF .....  
 TNR  
 Antenna ExEy .....  
 Mode A-32 .....  
 Sweep ACE .....