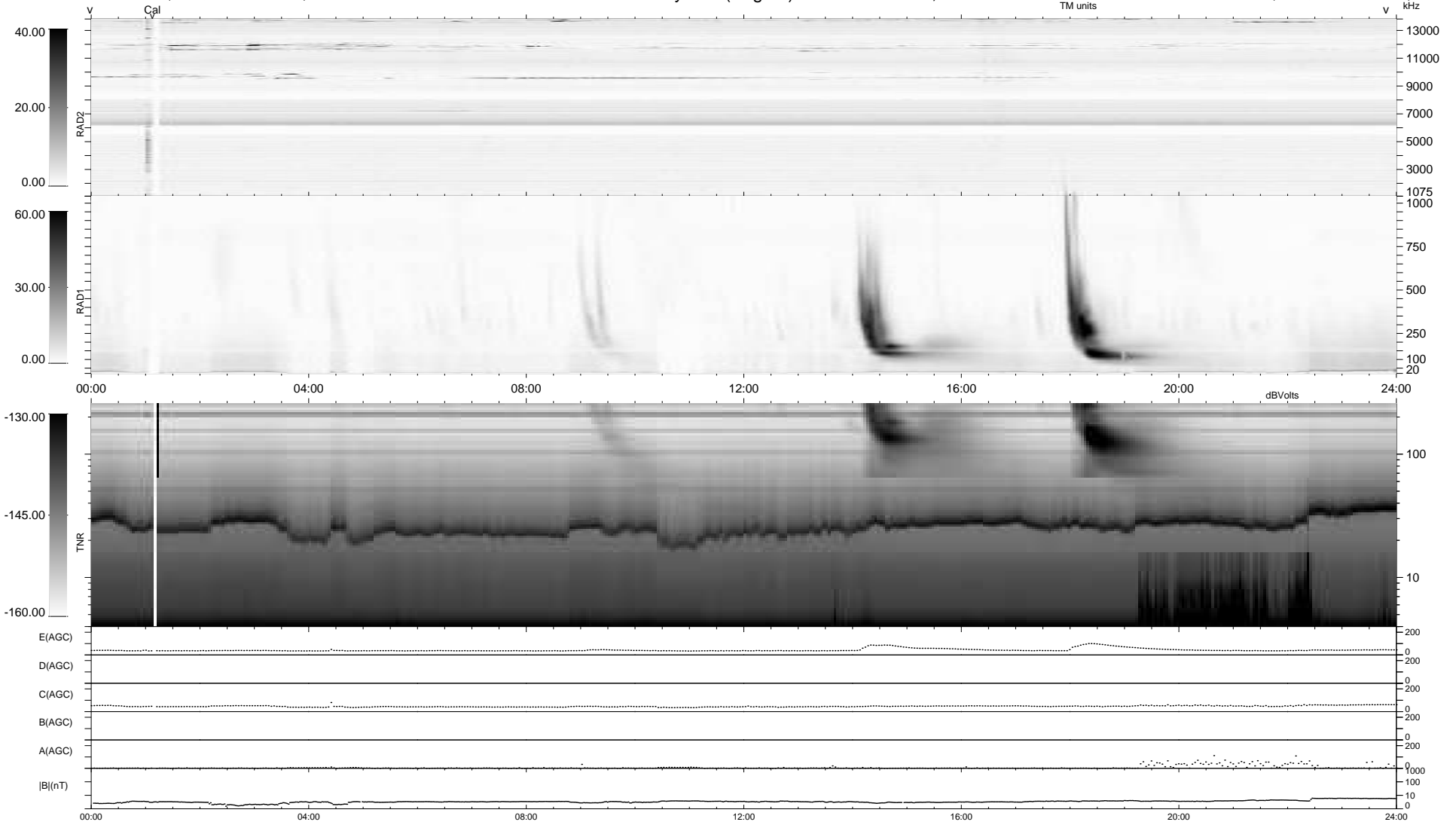


6 bad + 934 good MF/940MF projected (99%) - 0 missing MFs  
 Avg interval = 180 secs  
 Re = -205.71 (197.85, -54.34, -14.83 GSE)

windlib 2.0b LZ version = v01  
 DAILY 2011-01-31 21:35:06  
 Re = 204.76 (197.68, -51.12, -15.36 GSE)

### WIND/WAVES Summary Plot (Page 1) for 30-JAN-2011, DOY = 30



```

RAD2
Antenna Ey .....
Mode LIN(1) .....
SUM/SEP SEP .....
Toggle OFF .....

RAD1
Antenna Ex .....
Mode LIS(2,4) .....
SUM/SEP SUM .....
Toggle OFF .....

TNR
Antenna ExEy .....
Mode A-32 .....
Sweep ACE .....
  
```