

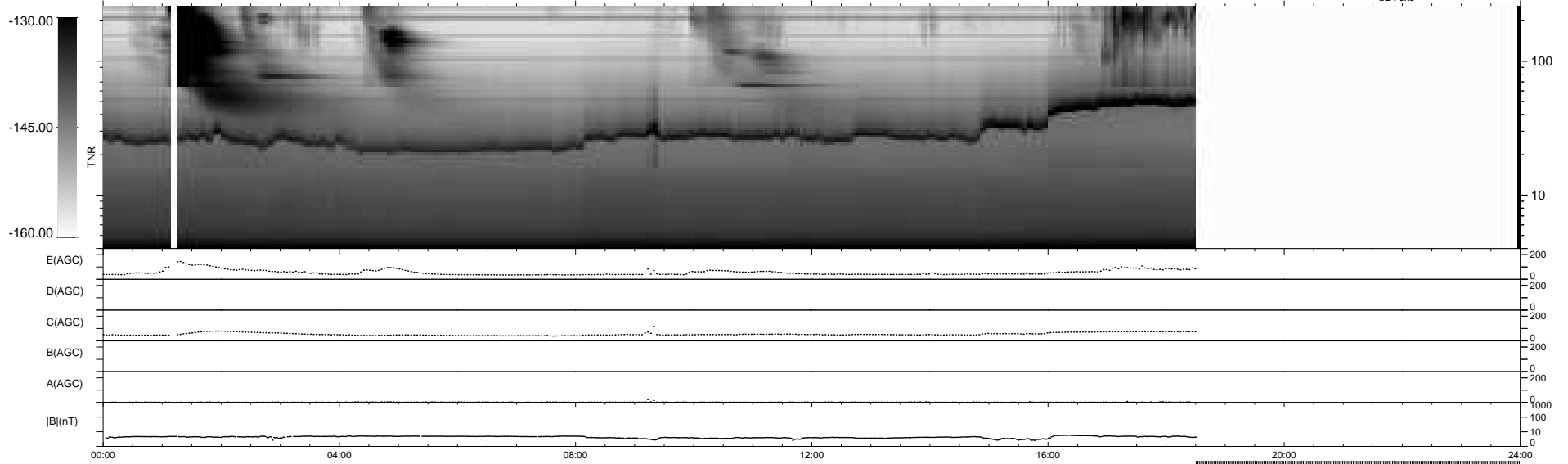
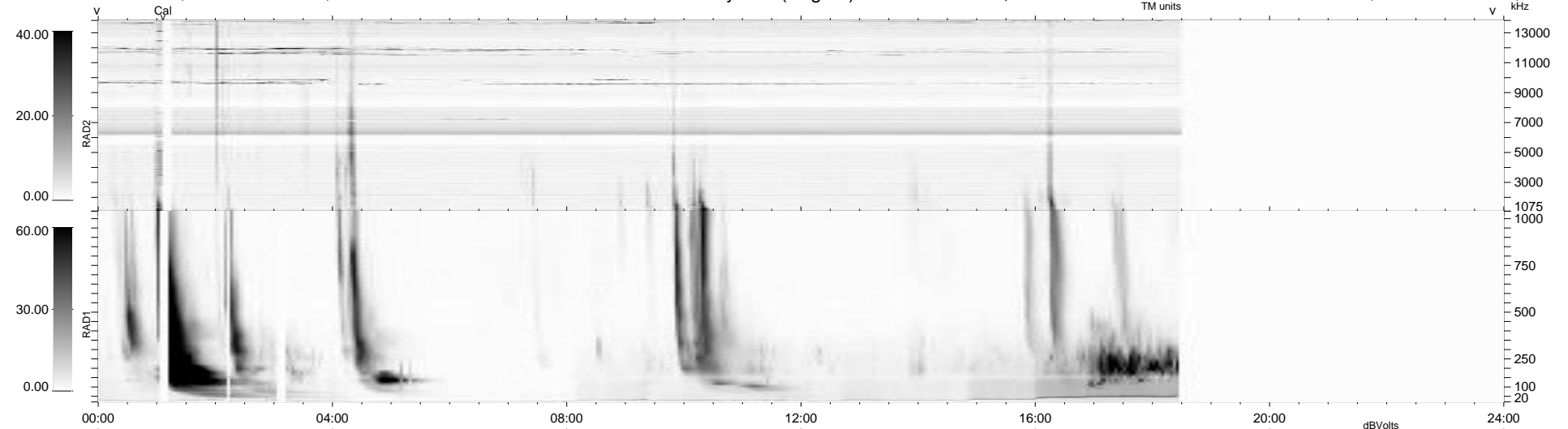
8 bad + 716 good MF/939MF projected (76%) - 215 missing MFs
 Avg interval = 180 secs
 Re = - 207.70 (198.22, -60.49, -13.69 GSE)

windlib 2.0b

LZ version = v01

WIND/WAVES Summary Plot (Page 1) for 28-JAN-2011, DOY = 28

DAILY 2011-01-30 02:35:05
 Re = 206.70 (198.03, -57.49, -14.27 GSE)



RAD2
 Antenna Ey
 Mode LIN(1)
 SUM/SEP SEP
 Toggle OFF

RAD1
 Antenna Ex
 Mode LIS(2,4)
 SUM/SEP SUM
 Toggle OFF

TNR
 Antenna ExEy
 Mode A-32
 Sweep ACE