

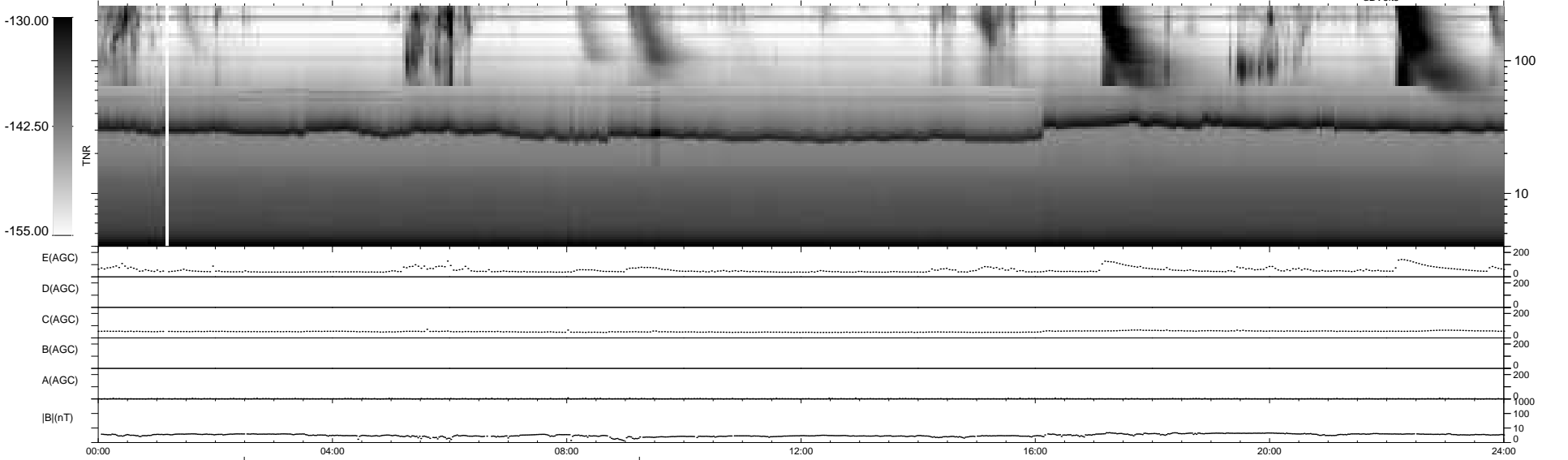
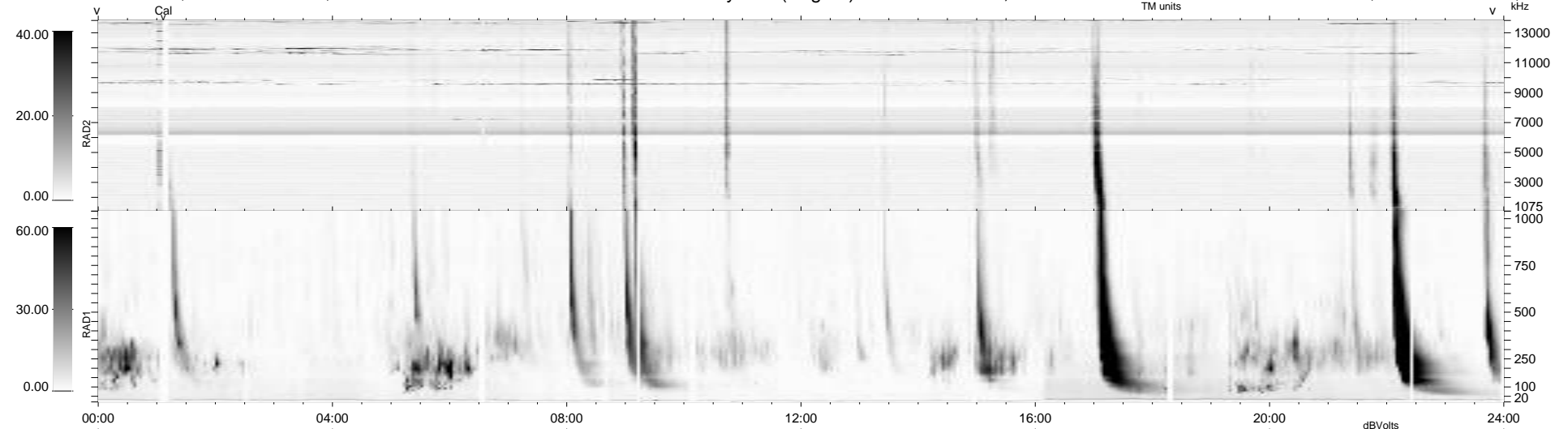
13 bad + 924 good MF/939MF projected (98%) - 2 missing MFs
 Avg interval = 180 secs
 Re = 209.77 (198.68, -66.14, -12.45 GSE)

windlib 2.0b

LZ version = v01

WIND/WAVES Summary Plot (Page 1) for 26-JAN-2011, DOY = 26

DAILY 2011-01-28 11:36:02
 Re = 208.73 (198.44, -63.40, -13.08 GSE)



RAD2
 Antenna Ey
 Mode LIN(1)
 SUM/SEP SEP
 Toggle OFF
 RAD1
 Antenna Ex
 Mode LIS(2,4)
 SUM/SEP SUM
 Toggle OFF
 TNR
 Antenna ExEy
 Mode A-32
 Sweep ACE