

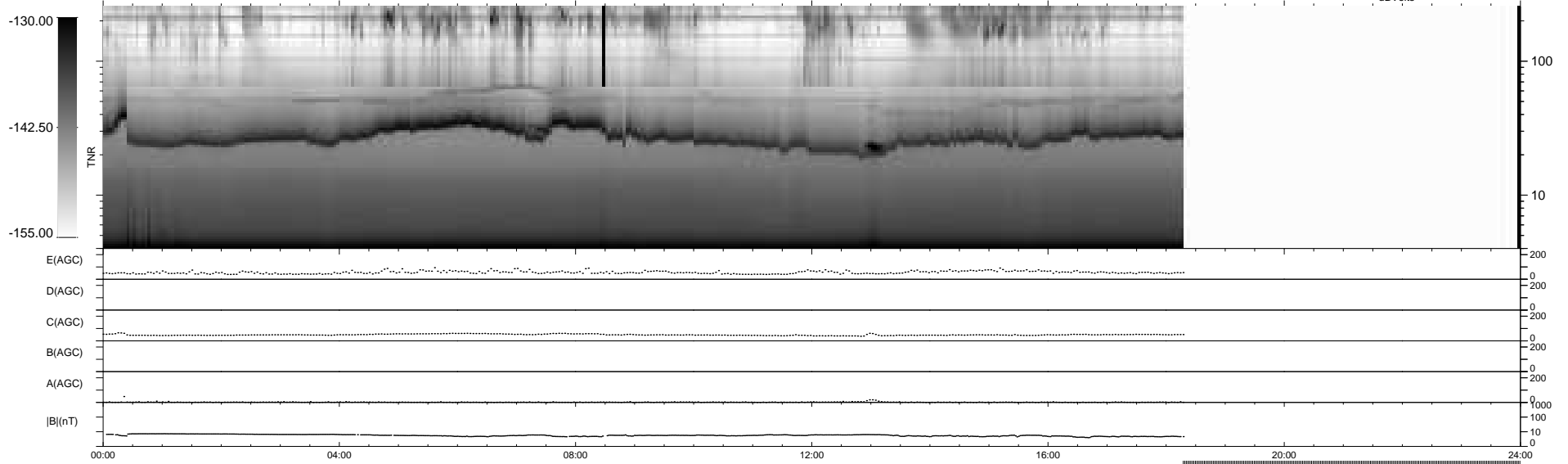
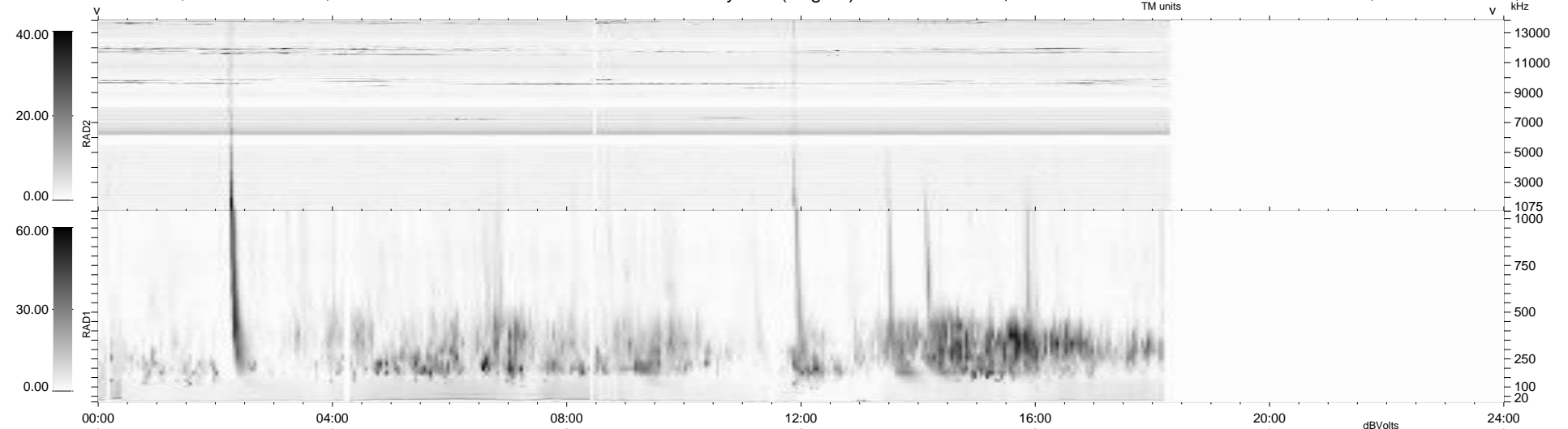
11 bad + 704 good MF/939MF projected (74%) - 224 missing MFs  
 Avg interval = 180 secs  
 Re = -210.84 (198.96, -68.77, -11.80 GSE)

windlib 2.0b

LZ version = v01

### WIND/WAVES Summary Plot (Page 1) for 25-JAN-2011, DOY = 25

DAILY 2011-01-27 19:35:06  
 Re = 209.78 (198.68, -66.16, -12.45 GSE)



RAD2  
 Antenna Ey .....  
 Mode LIN(1) .....  
 SUM/SEP SEP .....  
 Toggle OFF .....  
 RAD1  
 Antenna Ex .....  
 Mode LIS(2,4) .....  
 SUM/SEP SUM .....  
 Toggle OFF .....  
 TNR  
 Antenna ExEy .....  
 Mode A-32 .....  
 Sweep ACE .....