

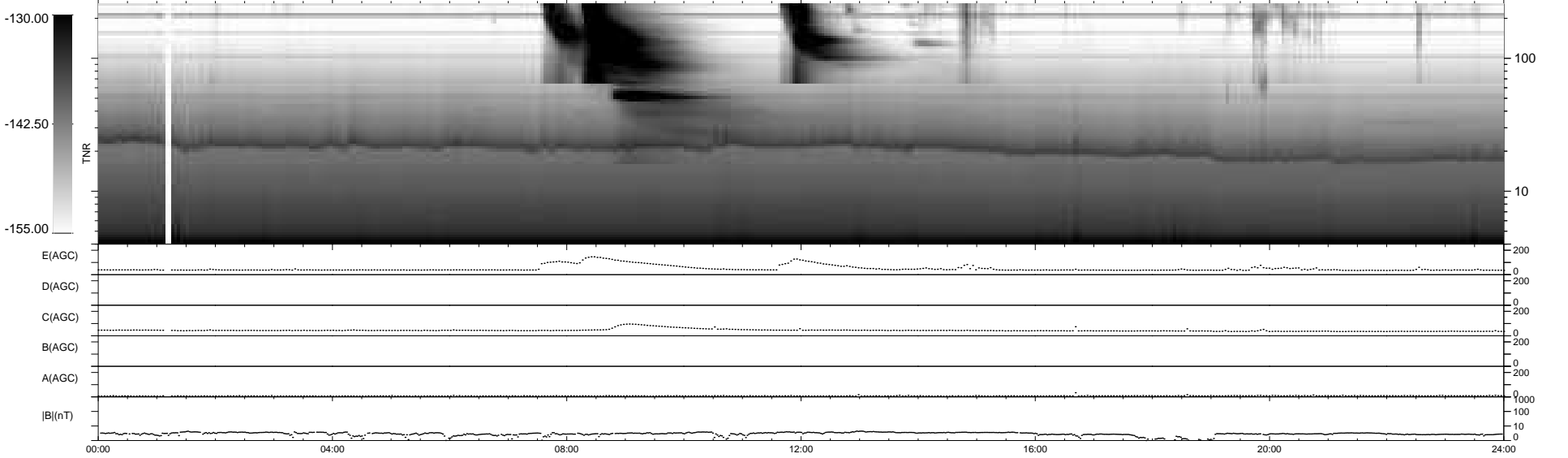
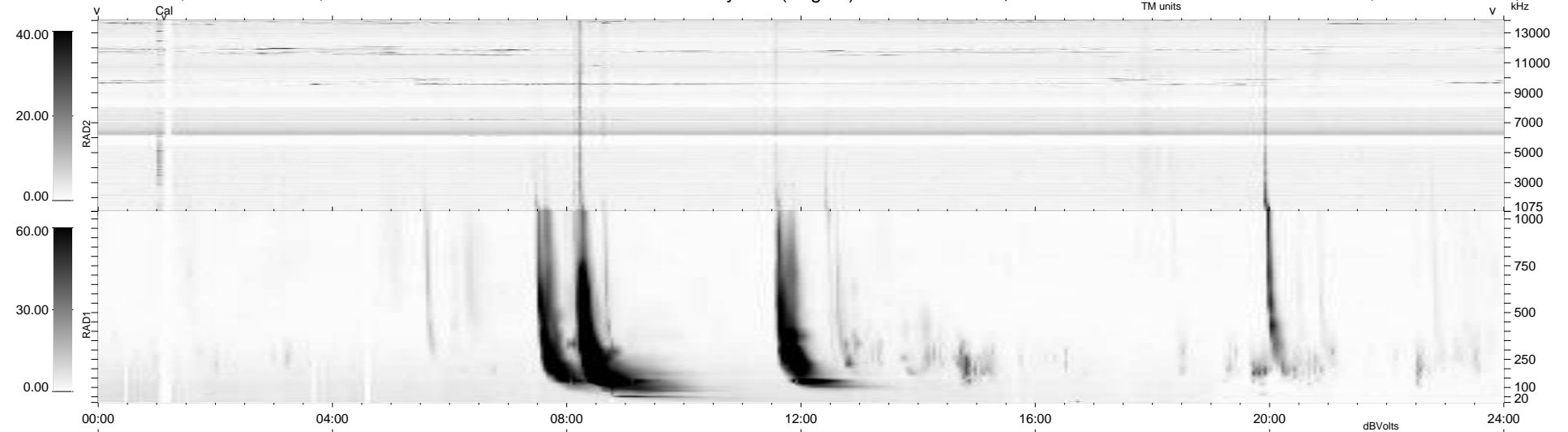
11 bad + 929 good MF/940MF projected (98%) - 0 missing MFs
 Avg interval = 180 secs
 Re = 214.23 (200.11, -75.85, -9.71 GSE)

windlib 2.0b

LZ version = v01

WIND/WAVES Summary Plot (Page 1) for 22-JAN-2011, DOY = 22

DAILY 2011-01-23 13:35:06
 Re = 213.07 (199.67, -73.64, -10.42 GSE)



```

RAD2
Antenna Ey .....
Mode LIN(1) .....
SUM/SEP SEP .....
Toggle OFF .....

RAD1
Antenna Ex .....
Mode LIS(2,4) .....
SUM/SEP SUM .....
Toggle OFF .....

TNR
Antenna ExEy .....
Mode A-32 .....
Sweep ACE .....
  
```