

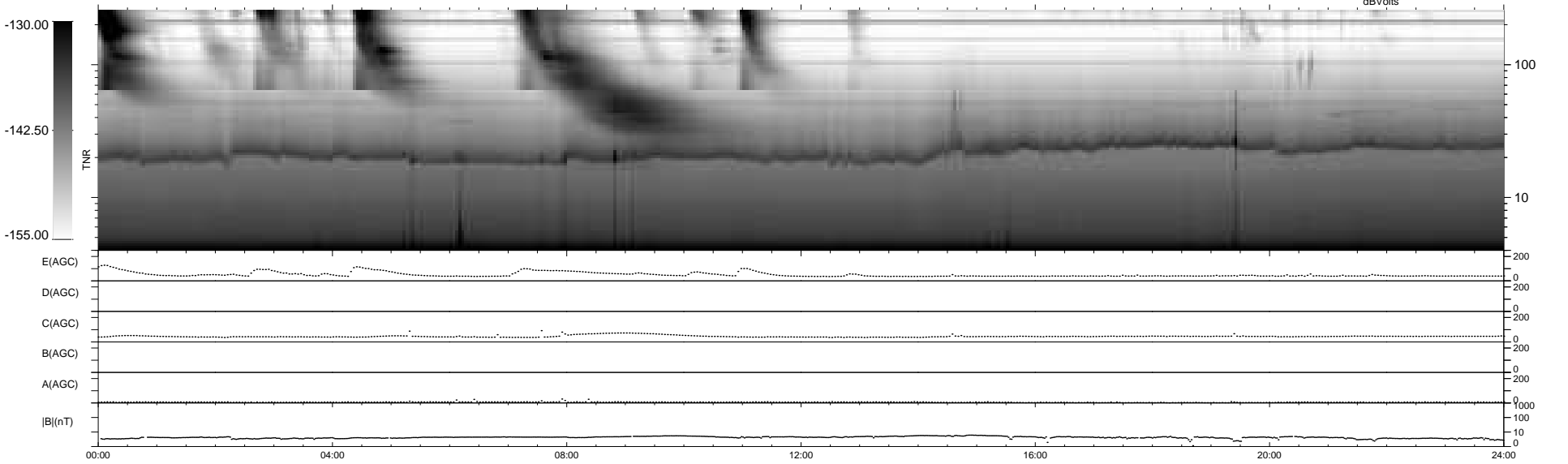
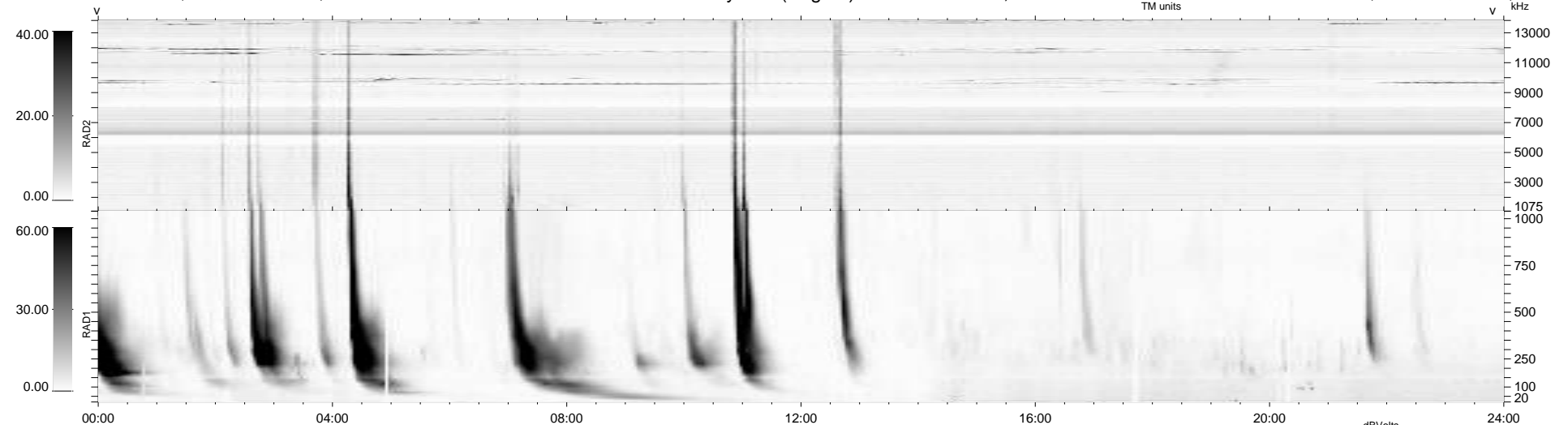
7 bad + 932 good MF/939MF projected (99%) - 0 missing MFs  
 Avg interval = 180 secs  
 Re = 215.43 (200.63, -77.95, -8.98 GSE)

windlib 2.0b

LZ version = v04

### WIND/WAVES Summary Plot (Page 1) for 21-JAN-2011, DOY = 21

DAILY 2011-02-15 12:35:06  
 Re = 214.24 (200.12, -75.87, -9.71 GSE)



RAD2  
 Antenna Ey .....  
 Mode LIN(1) .....  
 SUM/SEP SEP .....  
 Toggle OFF .....  
 RAD1  
 Antenna Ex .....  
 Mode LIS(2,4) .....  
 SUM/SEP SUM .....  
 Toggle OFF .....  
 TNR  
 Antenna ExEy .....  
 Mode A-32 .....  
 Sweep ACE .....