

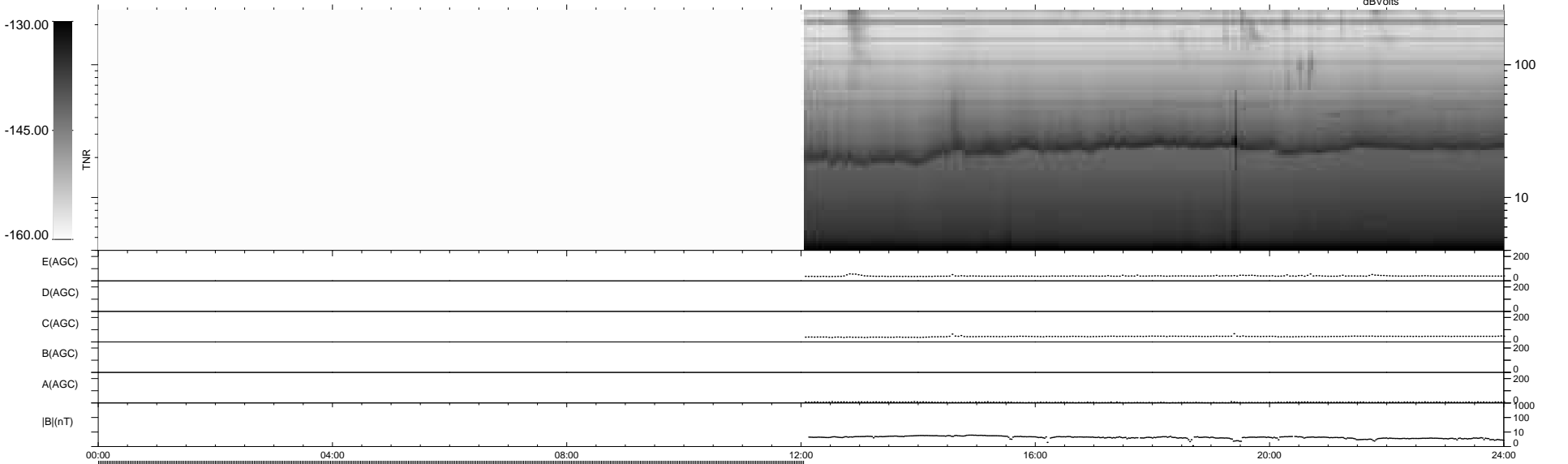
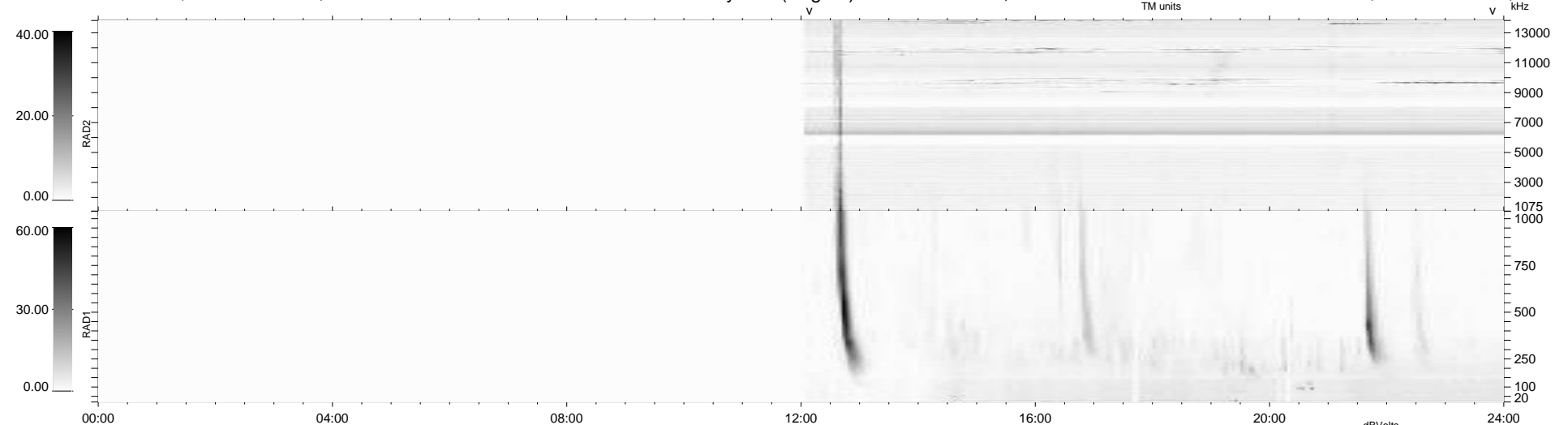
3 bad + 464 good MF/939MF projected (49%) - 472 missing MFs  
Avg interval = 180 secs  
Re = 214.81 (200.36, -76.91, -9.35 GSE)

windlib 2.0b

LZ version = v02

### WIND/WAVES Summary Plot (Page 1) for 21-JAN-2011, DOY = 21

DAILY 2011-01-24 13:35:05  
Re = 214.24 (200.12, -75.87, -9.71 GSE)



RAD2 Antenna Mode SUM/SEP Toggle  
RAD1 Antenna Mode SUM/SEP Toggle  
TNR Antenna Mode Sweep