

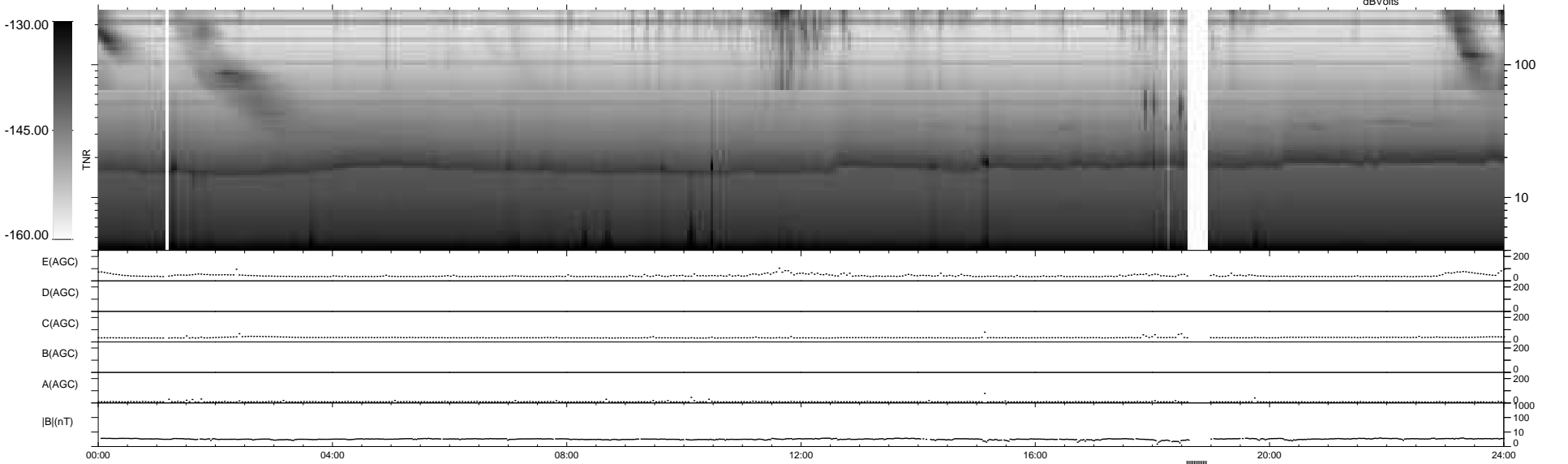
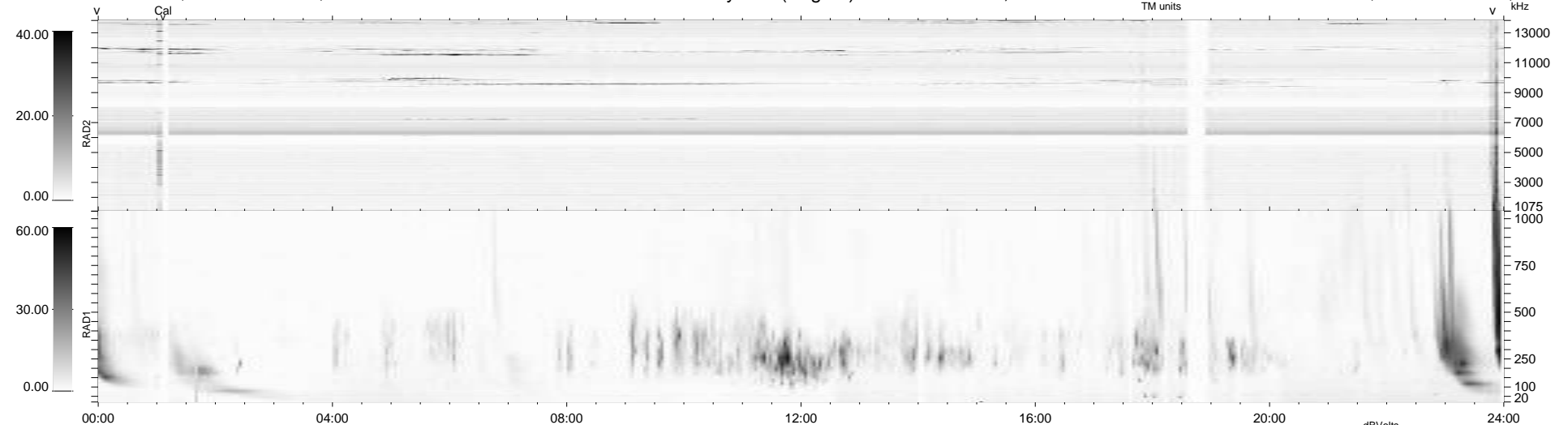
16 bad + 909 good MF/939MF projected (96%) - 14 missing MFs  
 Avg interval = 180 secs  
 Re = 216.66 (201.21, -79.93, -8.23 GSE)

windlib 2.0b

LZ version = v03

### WIND/WAVES Summary Plot (Page 1) for 20-JAN-2011, DOY = 20

DAILY 2011-01-28 10:35:07  
 Re = 215.44 (200.63, -77.97, -8.97 GSE)



RAD2  
 Antenna Ey  
 Mode LIN(1)  
 SUM/SEP SEP  
 Toggle OFF

RAD1  
 Antenna Ex  
 Mode LIS(2,4)  
 SUM/SEP SUM  
 Toggle OFF

TNR  
 Antenna ExEy  
 Mode A-32  
 Sweep ACE