

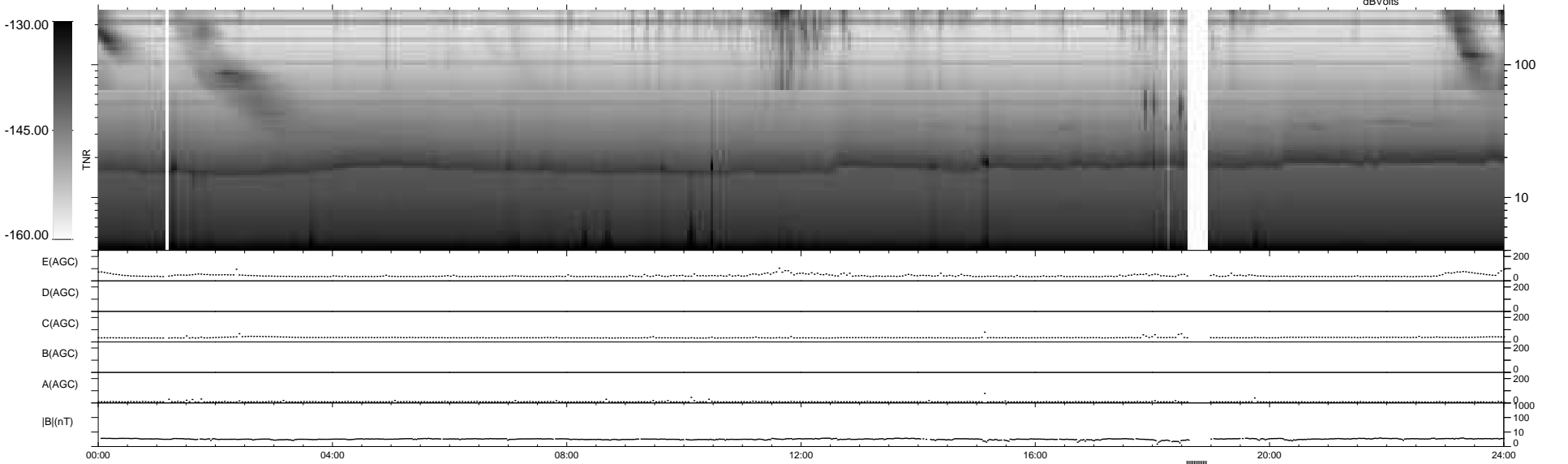
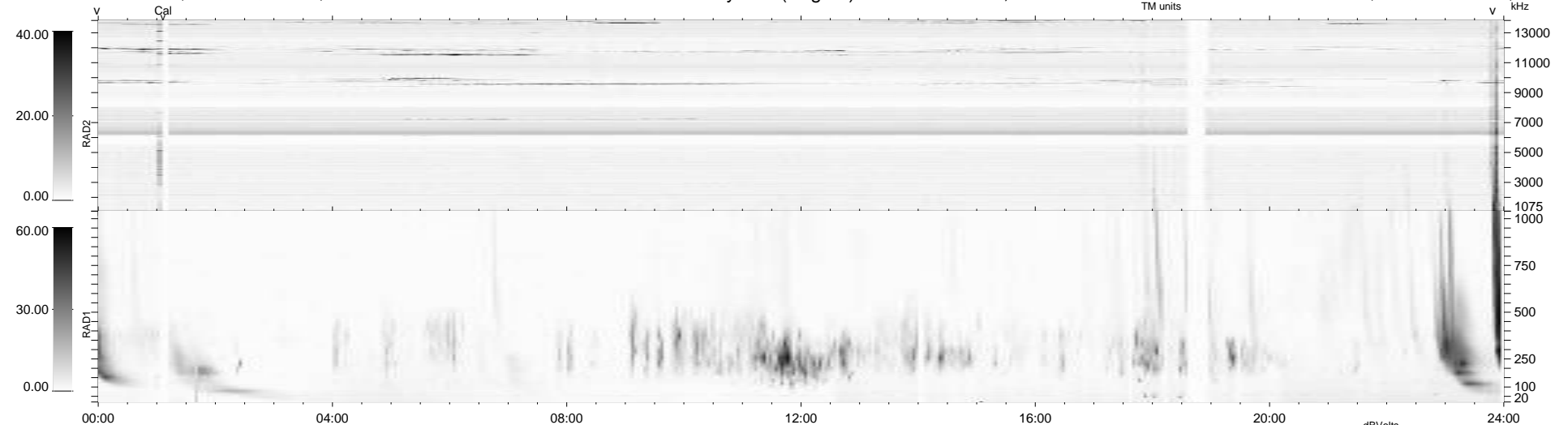
16 bad + 909 good MF/939MF projected (96%) - 14 missing MFs
 Avg interval = 180 secs
 Re = 216.66 (201.21, -79.93, -8.23 GSE)

windlib 2.0b

LZ version = v02

WIND/WAVES Summary Plot (Page 1) for 20-JAN-2011, DOY = 20

DAILY 2011-01-27 14:35:06
 Re = 215.44 (200.63, -77.97, -8.97 GSE)



RAD2
 Antenna Ey
 Mode LIN(1)
 SUM/SEP SEP
 Toggle OFF

RAD1
 Antenna Ex
 Mode LIS(2,4)
 SUM/SEP SUM
 Toggle OFF

TNR
 Antenna ExEy
 Mode A-32
 Sweep ACE