

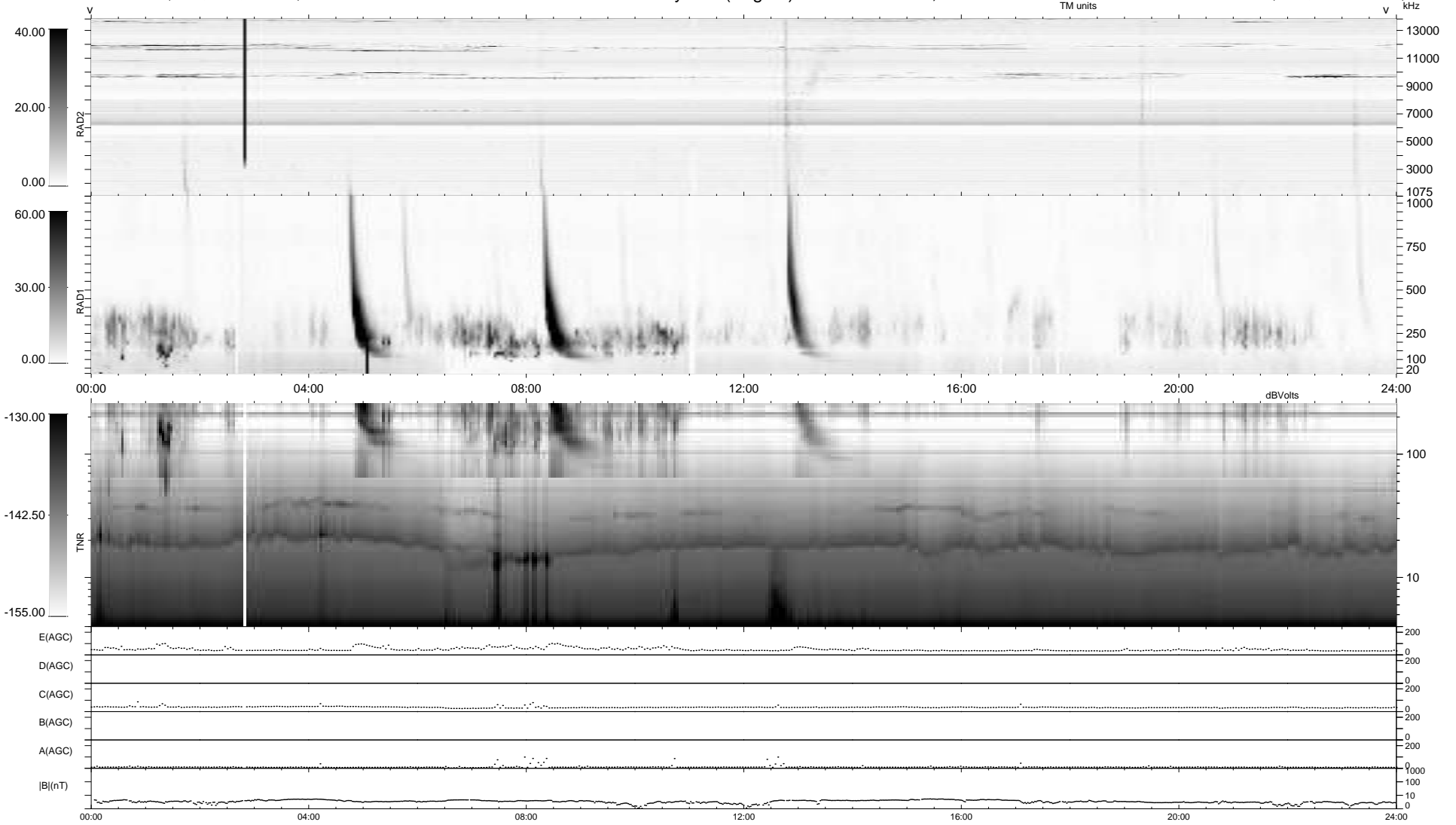
23 bad + 916 good MF/939MF projected (97%) - 0 missing MFs  
 Avg interval = 180 secs  
 Re = 220.60 (203.39, -85.21, -5.91 GSE)

windlib 2.0b

LZ version = v02

### WIND/WAVES Summary Plot (Page 1) for 17-JAN-2011, DOY = 17

DAILY 2011-01-18 16:36:04  
 Re = 219.26 (202.60, -83.57, -6.69 GSE)



RAD2  
 Antenna Ey  
 Mode LIN(1)  
 SUM/SEP SEP  
 Toggle OFF

RAD1  
 Antenna Ex  
 Mode LIS(2,4)  
 SUM/SEP SUM  
 Toggle OFF

TNR  
 Antenna ExEy  
 Mode A-32  
 Sweep ACE