

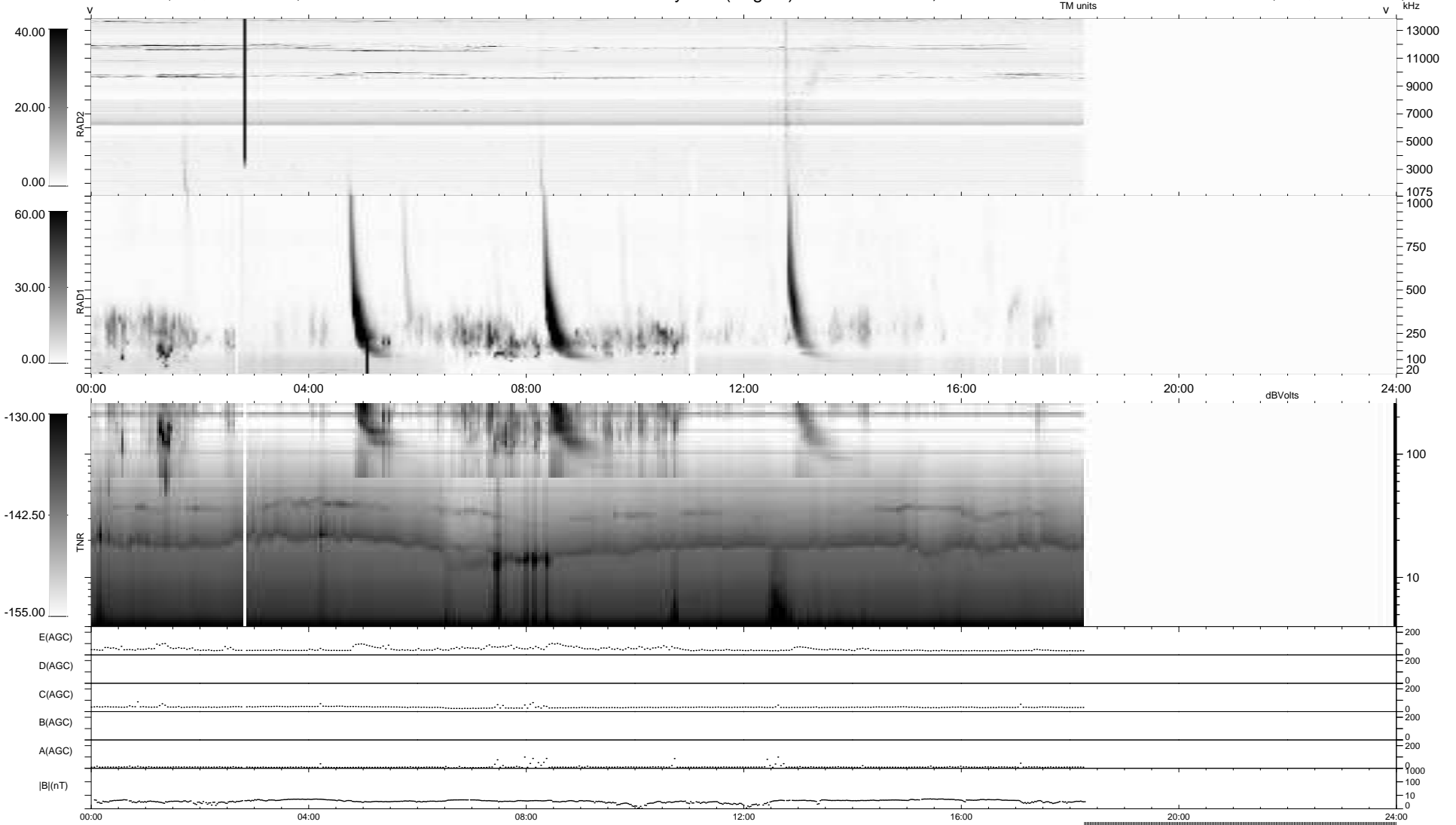
22 bad + 692 good MF/939MF projected (73%) - 225 missing MFs
 Avg interval = 180 secs
 Re = 220.60 (203.39, -85.21, -5.91 GSE)

windlib 2.0b

LZ version = v01

WIND/WAVES Summary Plot (Page 1) for 17-JAN-2011, DOY = 17

DAILY 2011-01-18 06:35:06
 Re = 219.26 (202.60, -83.57, -6.69 GSE)



```

RAD2
Antenna Ey .....
Mode LIN(1) .....
SUM/SEP SEP .....
Toggle OFF .....

RAD1
Antenna Ex .....
Mode LIS(2,4) .....
SUM/SEP SUM .....
Toggle OFF .....

TNR
Antenna ExEy .....
Mode A-32 .....
Sweep ACE .....
  
```