

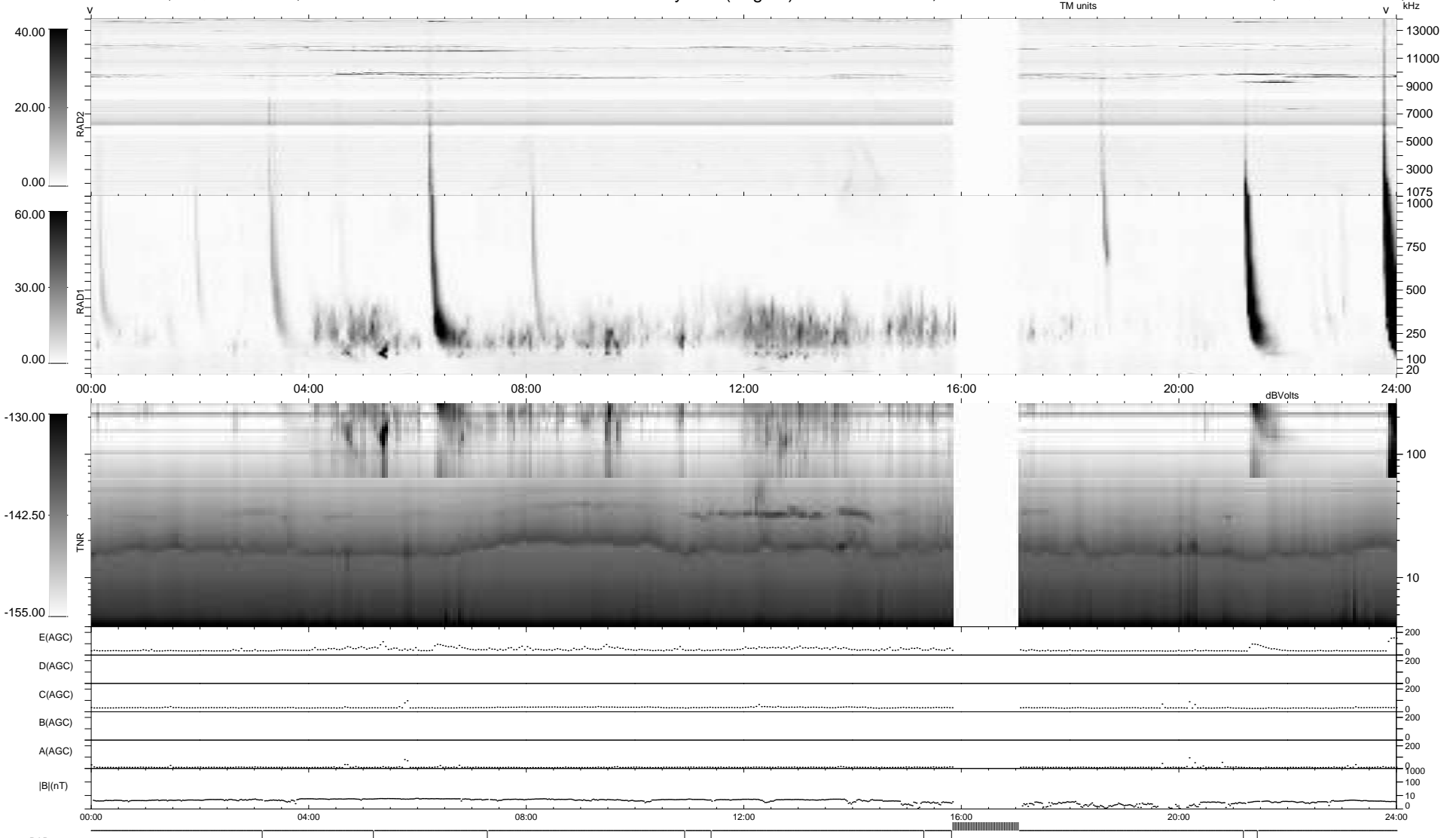
9 bad + 883 good MF/940MF projected (93%) - 48 missing MFs
 Avg interval = 180 secs
 Re = 223.37 (205.16, -88.22, -4.32 GSE)

windlib 2.0b

LZ version = v02

WIND/WAVES Summary Plot (Page 1) for 15-JAN-2011, DOY = 15

DAILY 2011-01-18 15:37:00
 Re = 221.98 (204.25, -86.77, -5.11 GSE)



RAD2 Antenna Ey
 Mode LIN(1)
 SUM/SEP SEP
 Toggle OFF
 RAD1 Antenna Ex
 Mode LIS(2,4)
 SUM/SEP SUM
 Toggle OFF
 TNR Antenna ExEy
 Mode A-32
 Sweep ACE