

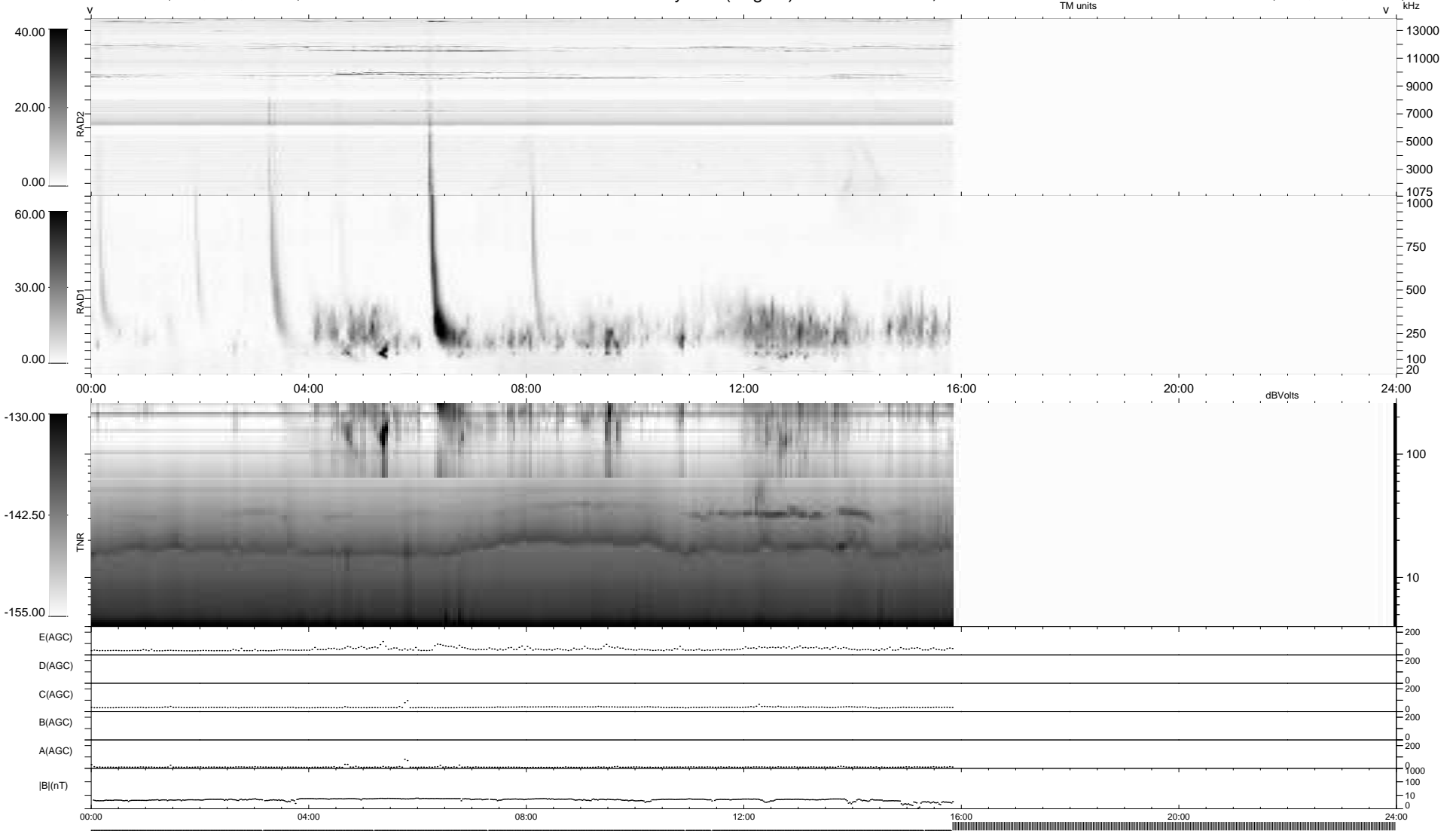
7 bad + 613 good MF/939MF projected (65%) - 319 missing MFs  
 Avg interval = 180 secs  
 Re = -223.37 (205.16, -88.22, -4.32 GSE)

windlib 2.0b

LZ version = v01

### WIND/WAVES Summary Plot (Page 1) for 15-JAN-2011, DOY = 15

DAILY 2011-01-16 04:35:07  
 Re = 221.98 (204.25, -86.77, -5.11 GSE)



```

RAD2
Antenna Ey .....
Mode LIN(1) .....
SUM/SEP SEP .....
Toggle OFF .....

RAD1
Antenna Ex .....
Mode LIS(2,4) .....
SUM/SEP SUM .....
Toggle OFF .....

TNR
Antenna ExEy .....
Mode A-32 .....
Sweep ACE .....
  
```