

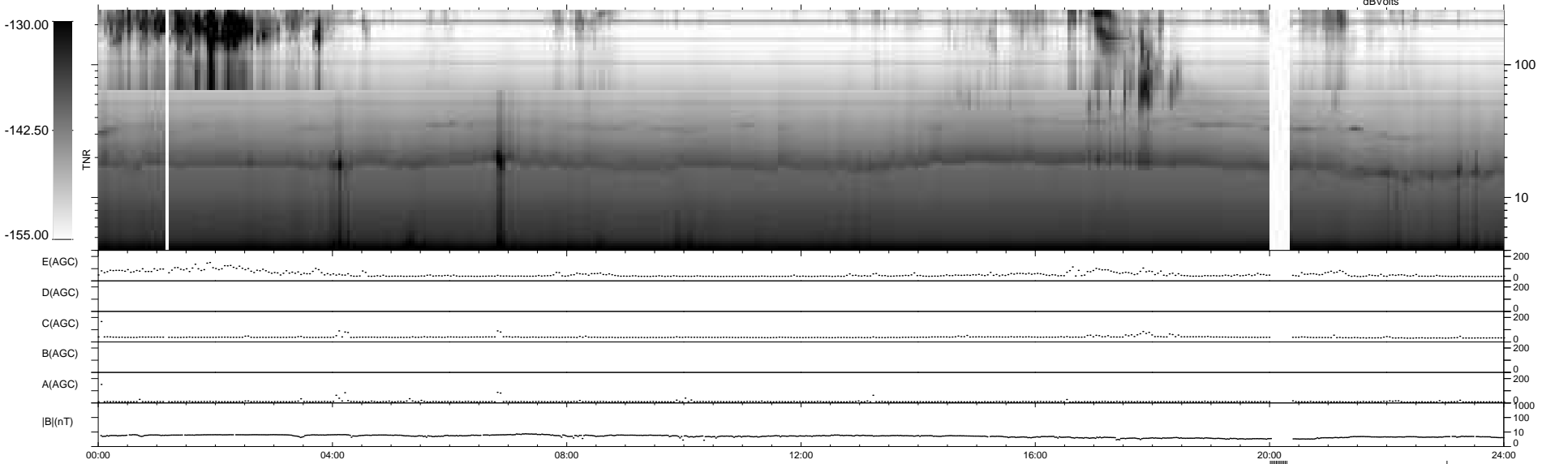
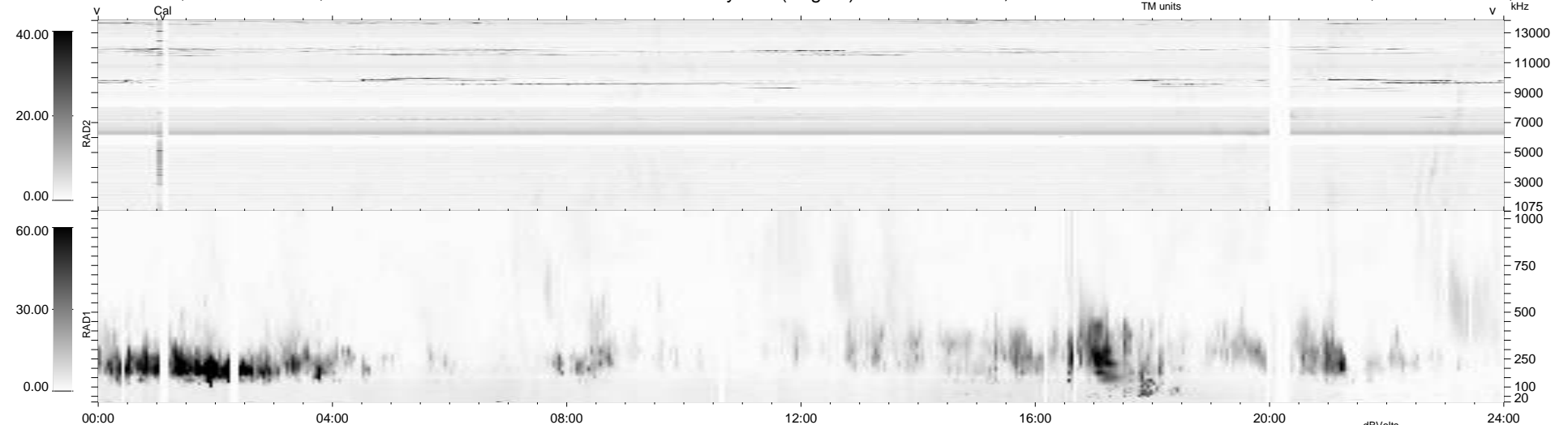
21 bad + 905 good MF/939MF projected (96%) - 13 missing MFs
 Avg interval = 180 secs
 Re = 224.78 (206.12, -89.59, -3.52 GSE)

windlib 2.0b

LZ version = v02

WIND/WAVES Summary Plot (Page 1) for 14-JAN-2011, DOY = 14

DAILY 2011-01-18 15:36:06
 Re = 223.38 (205.17, -88.23, -4.31 GSE)



RAD2
 Antenna Ey
 Mode LIN(1)
 SUM/SEP SEP
 Toggle OFF

RAD1
 Antenna Ex
 Mode LIS(2,4)
 SUM/SEP SUM
 Toggle OFF

TNR
 Antenna ExEy
 Mode A-32
 Sweep ACE