

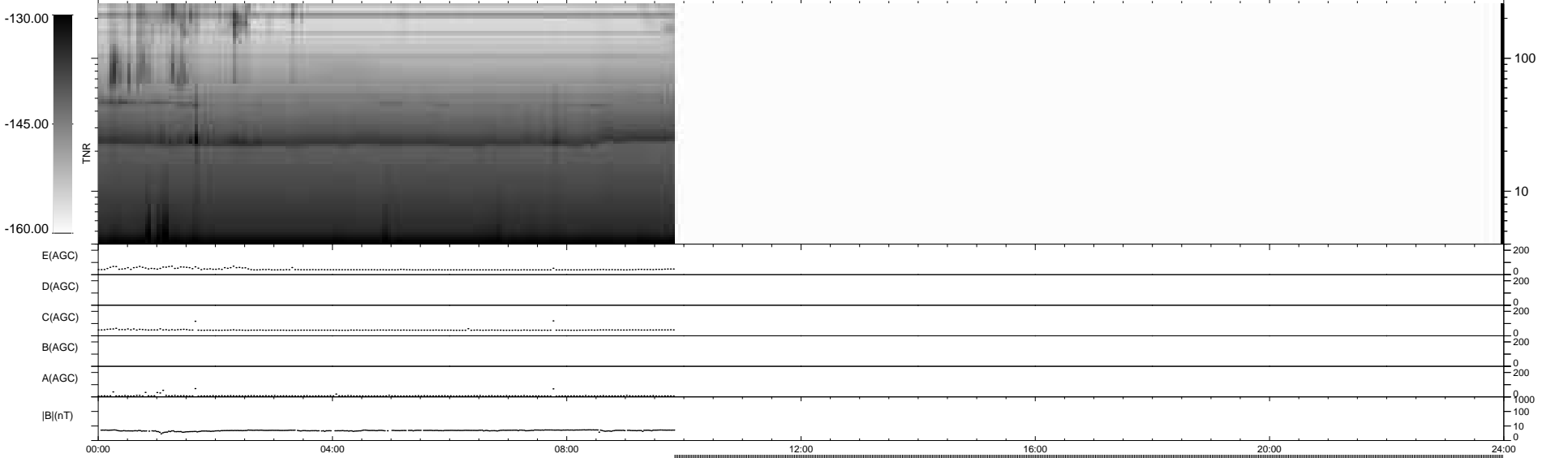
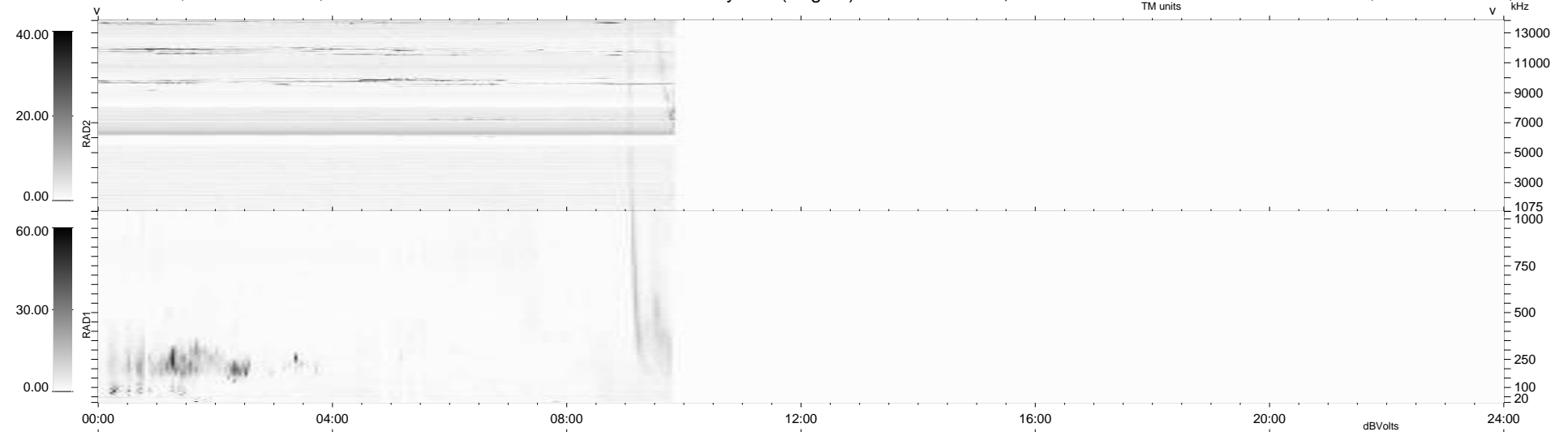
16 bad + 369 good MF/939MF projected (39%) - 554 missing MFs
 Avg interval = 180 secs
 Re = -226.20 (207.13, -90.86, -2.72 GSE)

windlib 2.0b

LZ version = v01

WIND/WAVES Summary Plot (Page 1) for 13-JAN-2011, DOY = 13

DAILY 2011-01-14 11:35:07
 Re = 224.79 (206.13, -89.60, -3.51 GSE)



RAD2
 Antenna Ey
 Mode LIN(1)
 SUM/SEP SEP
 Toggle OFF

RAD1
 Antenna Ex
 Mode LIS(2,4)
 SUM/SEP SUM
 Toggle OFF

TNR
 Antenna ExEy
 Mode A-32
 Sweep ACE