

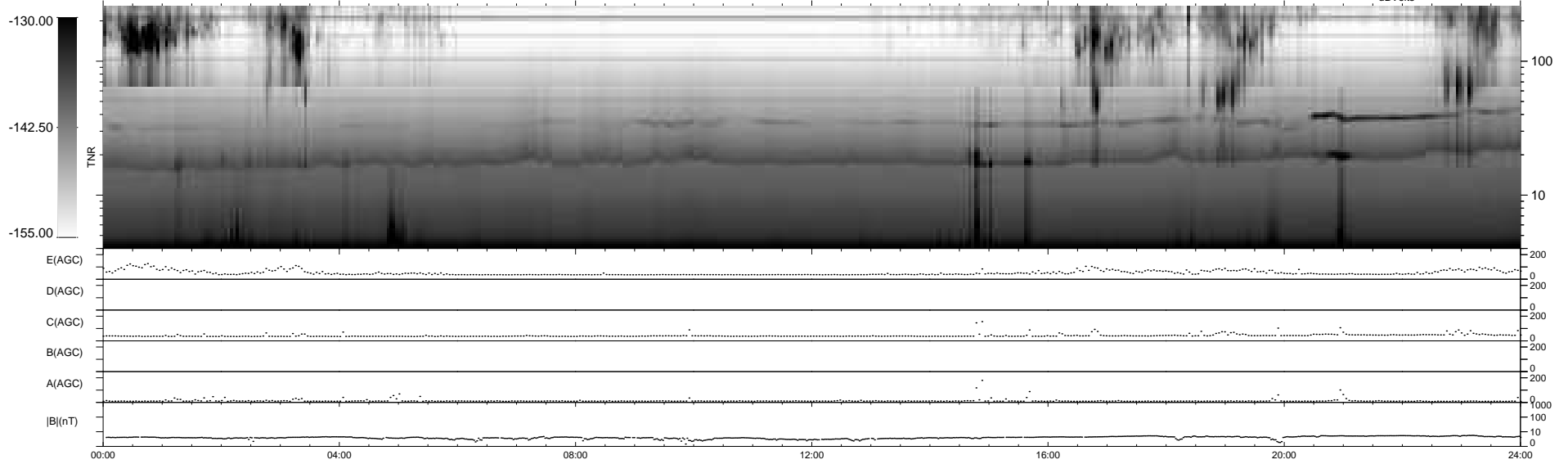
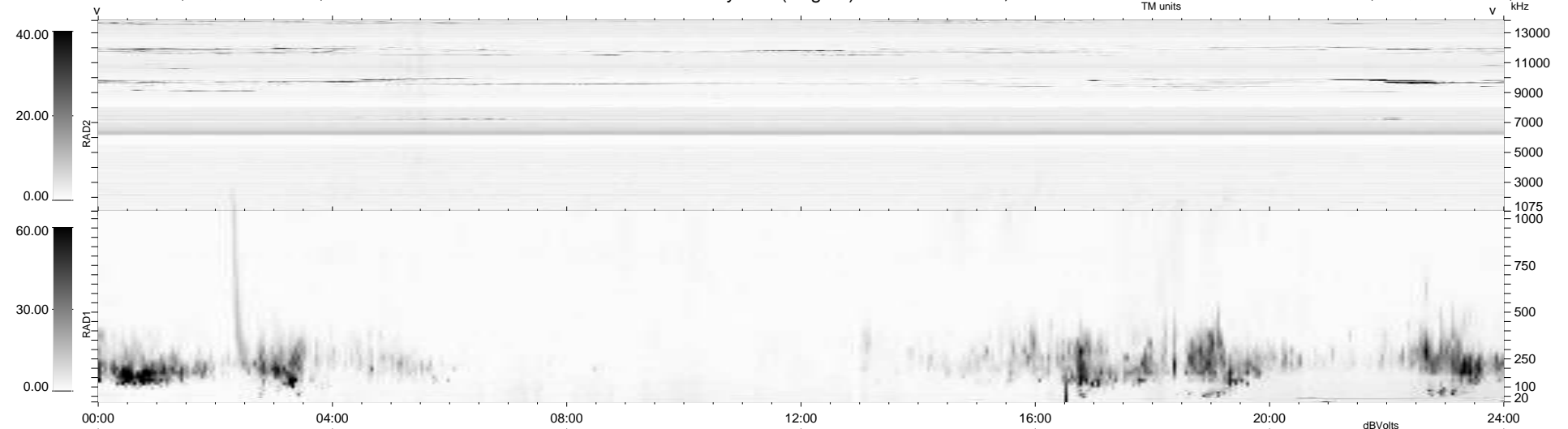
12 bad + 927 good MF/939MF projected (98%) - 0 missing MFs  
 Avg interval = 180 secs  
 Re = -229.04 (209.24, -93.13, -1.11 GSE)

windlib 2.0b

LZ version = v01

### WIND/WAVES Summary Plot (Page 1) for 11-JAN-2011, DOY = 11

DAILY 2011-01-12 14:36:09  
 Re = 227.63 (208.18, -92.05, -1.91 GSE)



RAD2  
 Antenna Ey  
 Mode LIN(1)  
 SUM/SEP SEP  
 Toggle OFF

RAD1  
 Antenna Ex  
 Mode LIS(2,4)  
 SUM/SEP SUM  
 Toggle OFF

TNR  
 Antenna ExEy  
 Mode A-32  
 Sweep ACE