

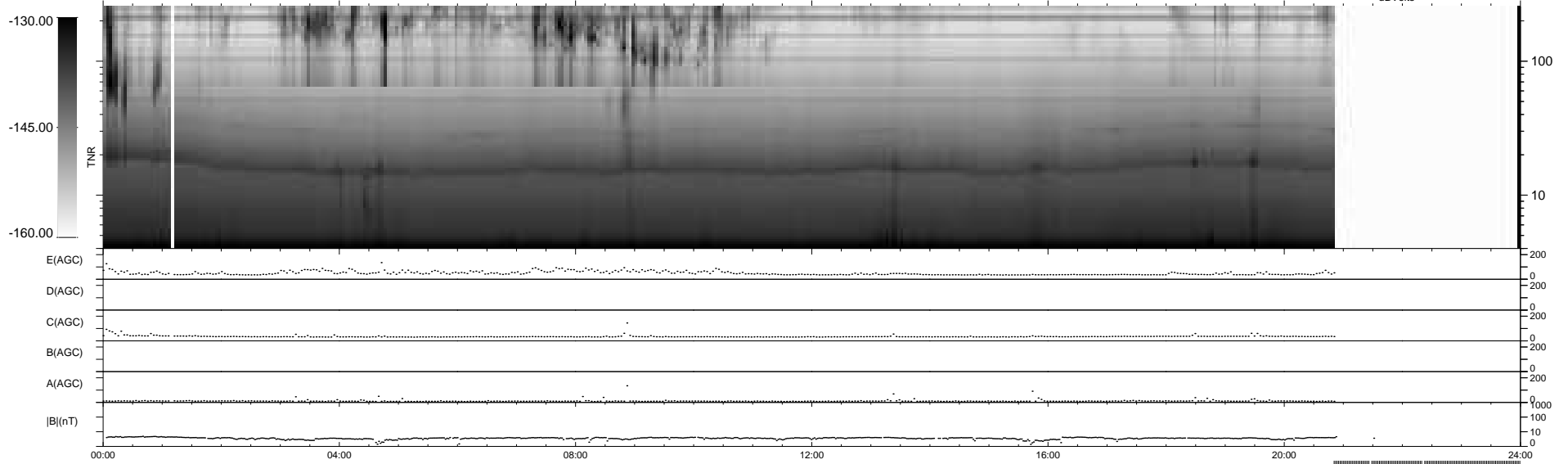
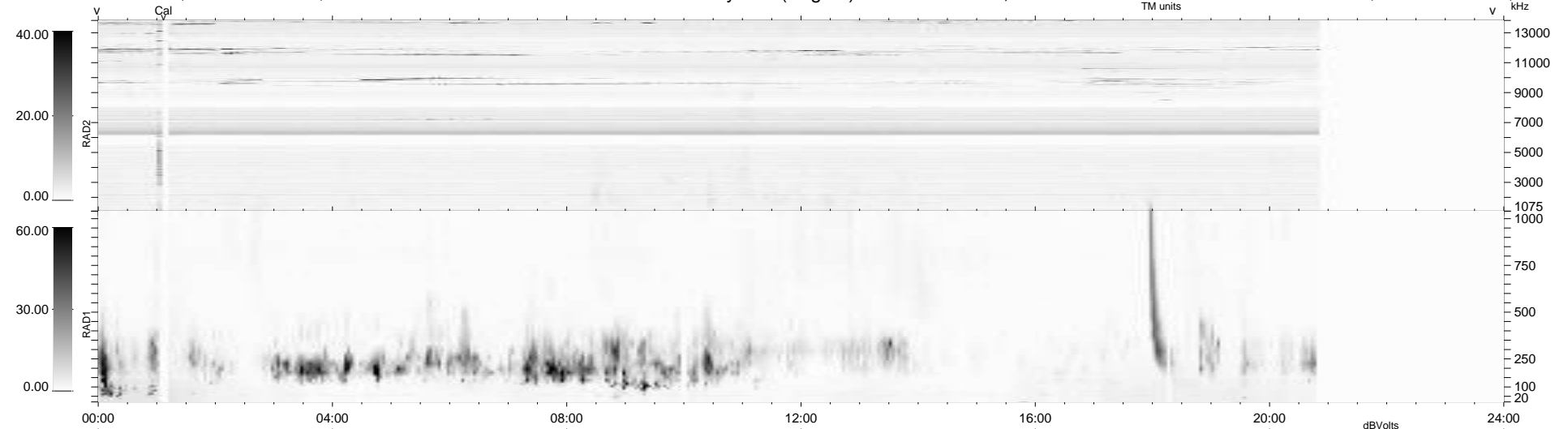
12 bad + 805 good MF/939MF projected (85%) - 122 missing MFs
 Avg interval = 180 secs
 Re = -230.44 (210.34, -94.12, -0.31 GSE)

windlib 2.0b

LZ version = v01

WIND/WAVES Summary Plot (Page 1) for 10-JAN-2011, DOY = 10

DAILY 2011-01-12 12:35:07
 Re = 229.05 (209.25, -93.14, -1.10 GSE)



```

RAD2
Antenna Ey .....
Mode LIN(1) .....
SUM/SEP SEP .....
Toggle OFF .....

RAD1
Antenna Ex .....
Mode LIS(2,4) .....
SUM/SEP SUM .....
Toggle OFF .....

TNR
Antenna ExEy .....
Mode A-32 .....
Sweep ACE .....
  
```