

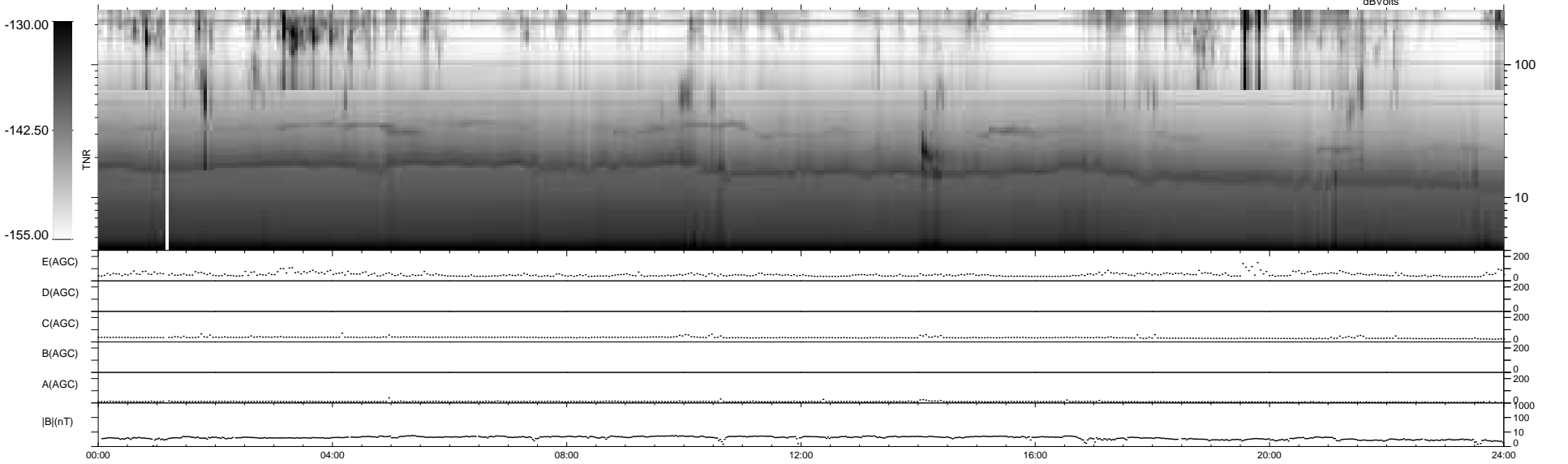
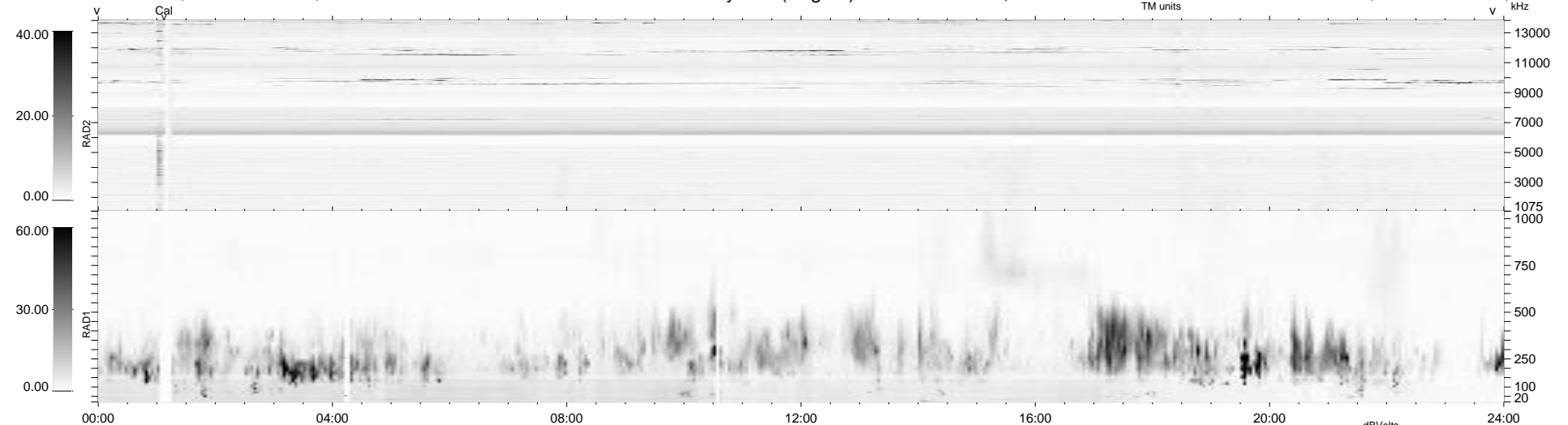
7 bad + 932 good MF/939MF projected (99%) - 0 missing MFs
 Avg interval = 180 secs
 Re = 233.17 (212.58, -95.81, 1.29 GSE)

windlib 2.0b

LZ version = v01

WIND/WAVES Summary Plot (Page 1) for 08-JAN-2011, DOY = 8

DAILY 2011-01-13 11:35:10
 Re = 231.83 (211.46, -95.02, 0.50 GSE)



```

RAD2
Antenna Ey .....
Mode LIN(1) .....
SUM/SEP SEP .....
Toggle OFF .....

RAD1
Antenna Ex .....
Mode LIS(2,4) .....
SUM/SEP SUM .....
Toggle OFF .....

TNR
Antenna ExEy .....
Mode A-32 .....
Sweep ACE .....
  
```