

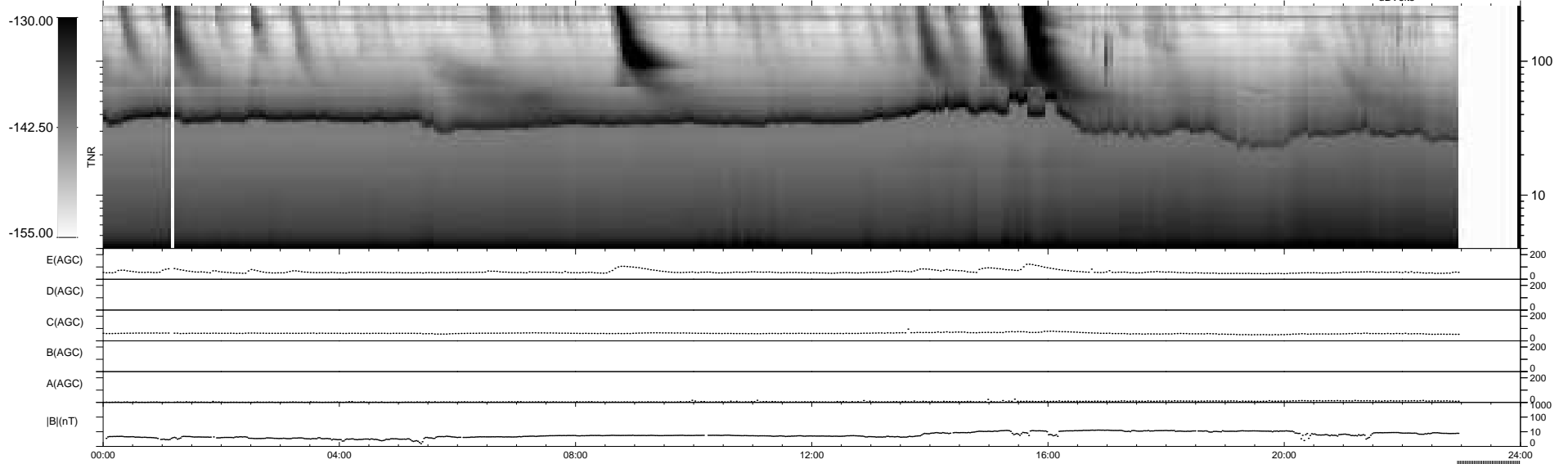
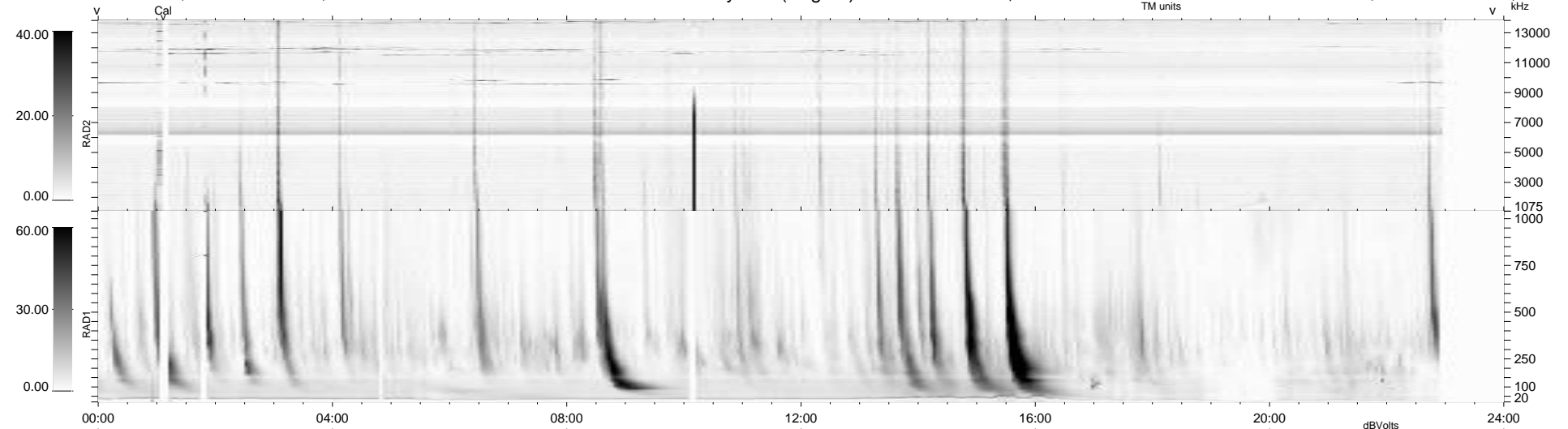
12 bad + 885 good MF/939MF projected (94%) - 42 missing MFs  
 Avg interval = 180 secs  
 Re = -254.36 (244.11, -68.74, 19.66 GSE)

windlib 2.0b

LZ version = v02

### WIND/WAVES Summary Plot (Page 1) for 12-DEC-2010, DOY = 346

DAILY 2010-12-14 16:35:08  
 Re = 253.81 (242.90, -71.08, 19.18 GSE)



RAD2  
 Antenna Ey  
 Mode LIN(1)  
 SUM/SEP SEP  
 Toggle OFF

RAD1  
 Antenna Ex  
 Mode LIS(2,4)  
 SUM/SEP SUM  
 Toggle OFF

TNR  
 Antenna ExEy  
 Mode A-32  
 Sweep ACE