

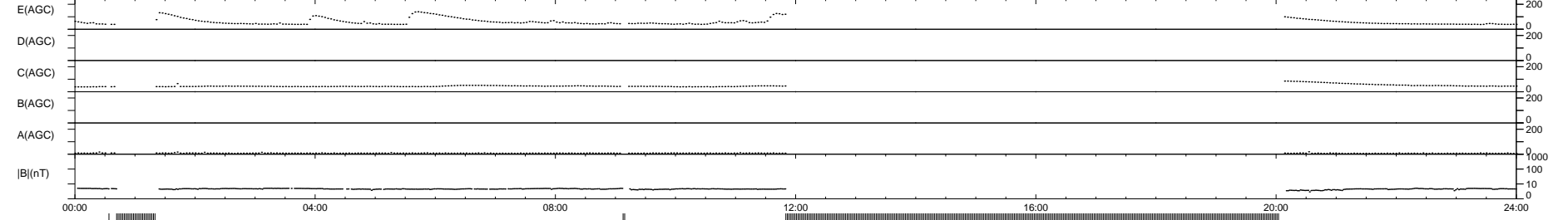
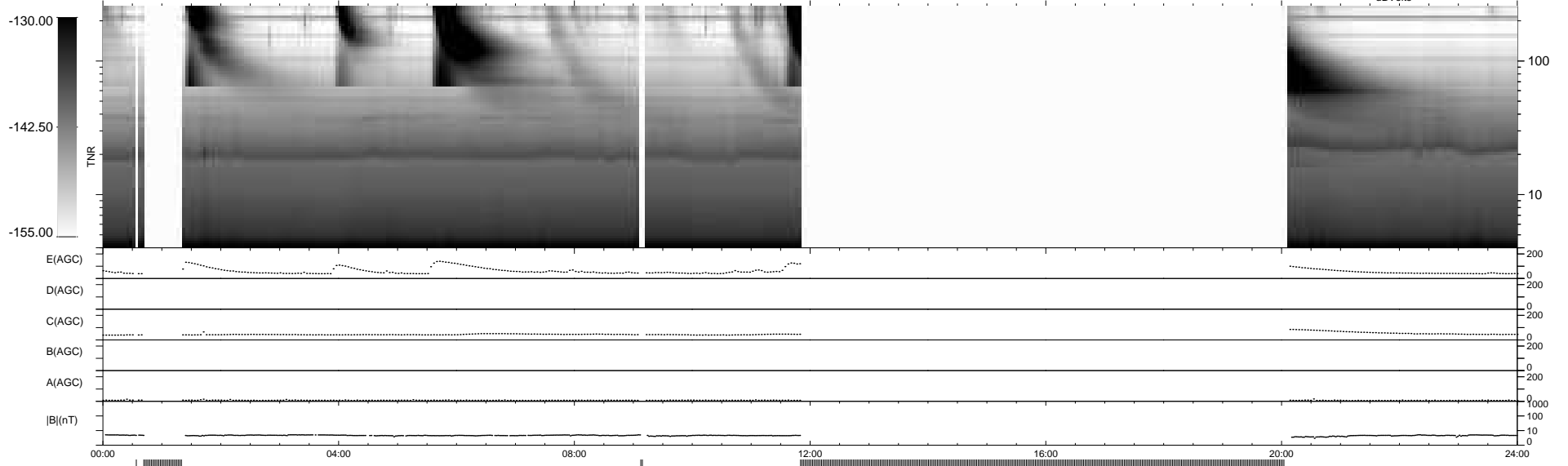
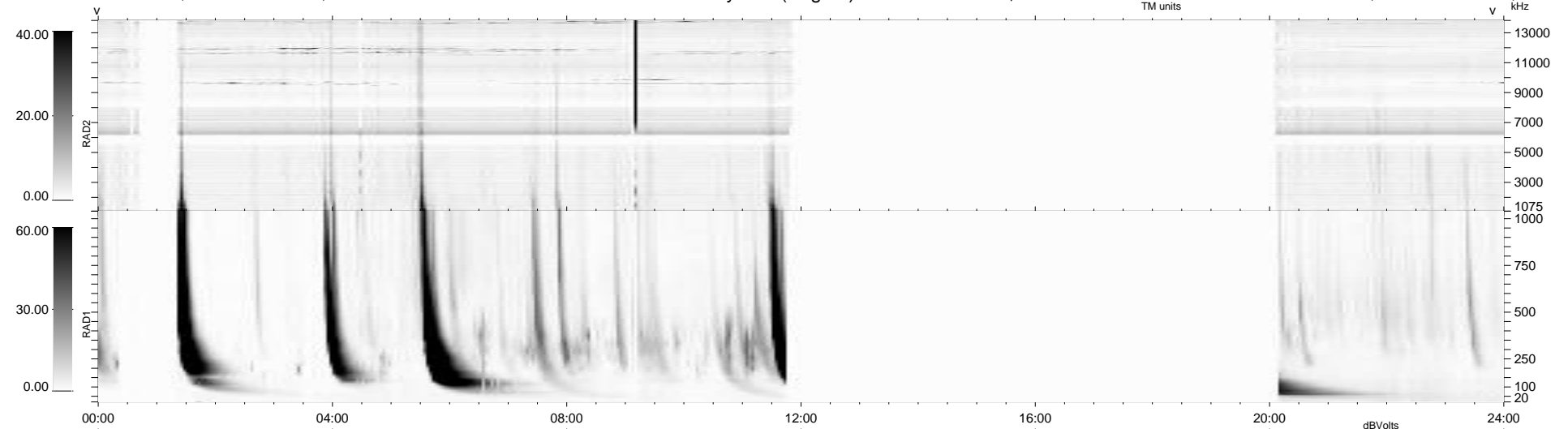
21 bad + 567 good MF/939MF projected (60%) - 351 missing MFs
 Avg interval = 180 secs
 Re = 257.83 (254.65, -32.47, 23.90 GSE)

windlib 2.0b

LZ version = v03

WIND/WAVES Summary Plot (Page 1) for 29-NOV-2010, DOY = 333

DAILY 2010-12-02 10:35:05
 Re = 257.83 (254.25, -35.67, 23.70 GSE)



RAD2
 Antenna Ey
 Mode LIN(1)
 SUM/SEP SEP
 Toggle OFF

RAD1
 Antenna Ex
 Mode LIS(2,4)
 SUM/SEP SUM
 Toggle OFF

TNR
 Antenna ExEy
 Mode A-32
 Sweep ACE