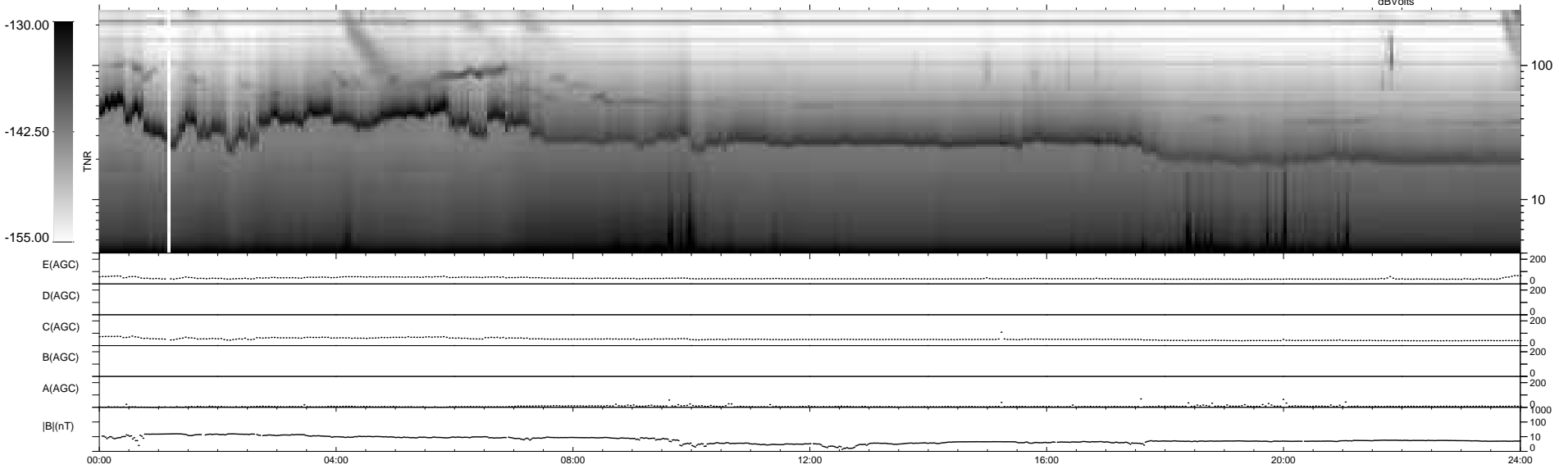
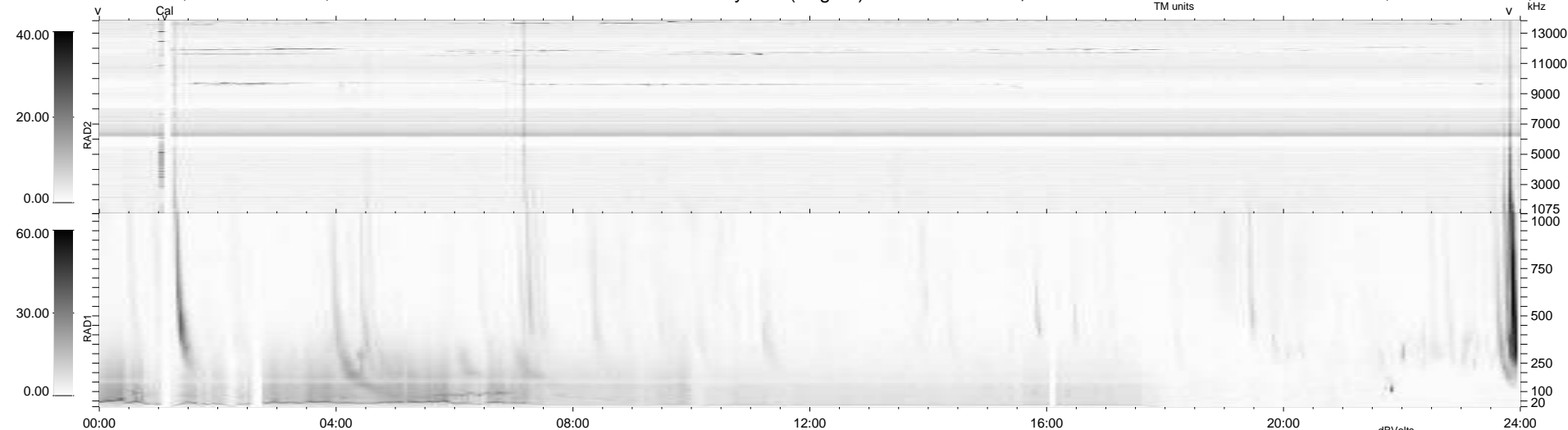


8 bad + 931 good MF/939MF projected (99%) - 0 missing MFs
 Avg interval = 180 secs
 Re = 257.80 (255.01, -29.18, 24.08 GSE)

windlib 2.0b LZ version = v01
 DAILY 2010-11-29 14:35:06
 Re = 257.83 (254.66, -32.45, 23.90 GSE)

WIND/WAVES Summary Plot (Page 1) for 28-NOV-2010, DOY = 332



```

RAD2
Antenna Ey .....
Mode LIN(1) .....
SUM/SEP SEP .....
Toggle OFF .....

RAD1
Antenna Ex .....
Mode LIS(2,4) .....
SUM/SEP SUM .....
Toggle OFF .....

TNR
Antenna ExEy .....
Mode A-32 .....
Sweep ACE .....
  
```