

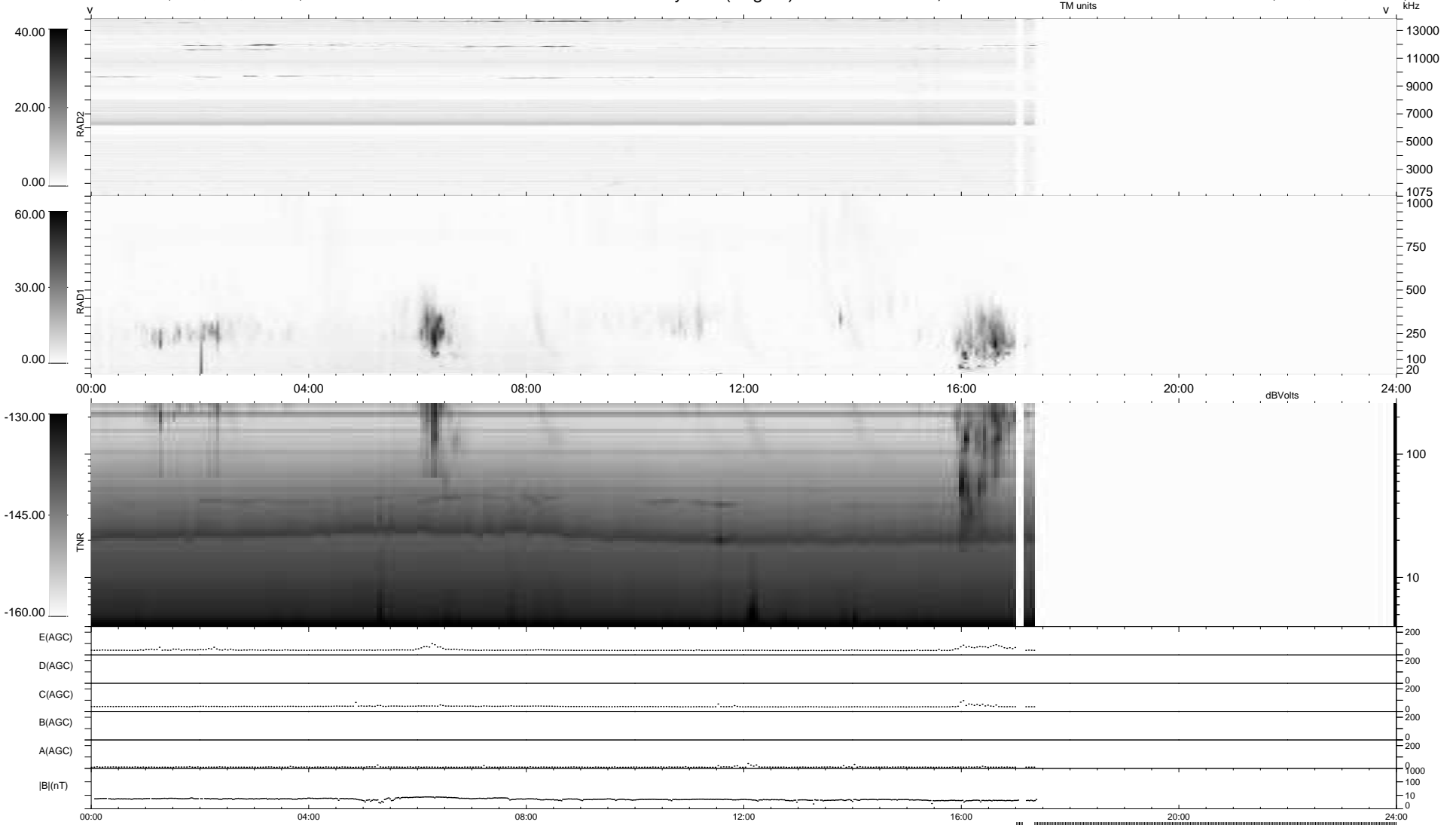
10 bad + 663 good MF/939MF projected (70%) - 266 missing MFs
 Avg interval = 180 secs
 Re = -257.73 (256.27, -11.83, 24.66 GSE)

windlib 2.0b

LZ version = v01

WIND/WAVES Summary Plot (Page 1) for 23-NOV-2010, DOY = 327

DAILY 2010-11-24 19:35:05
 Re = 257.71 (256.08, -15.36, 24.59 GSE)



```

RAD2
Antenna Ey .....
Mode LIN(1) .....
SUM/SEP SEP .....
Toggle OFF .....

RAD1
Antenna Ex .....
Mode LIS(2,4) .....
SUM/SEP SUM .....
Toggle OFF .....

TNR
Antenna ExEy .....
Mode A-32 .....
Sweep ACE .....
  
```