

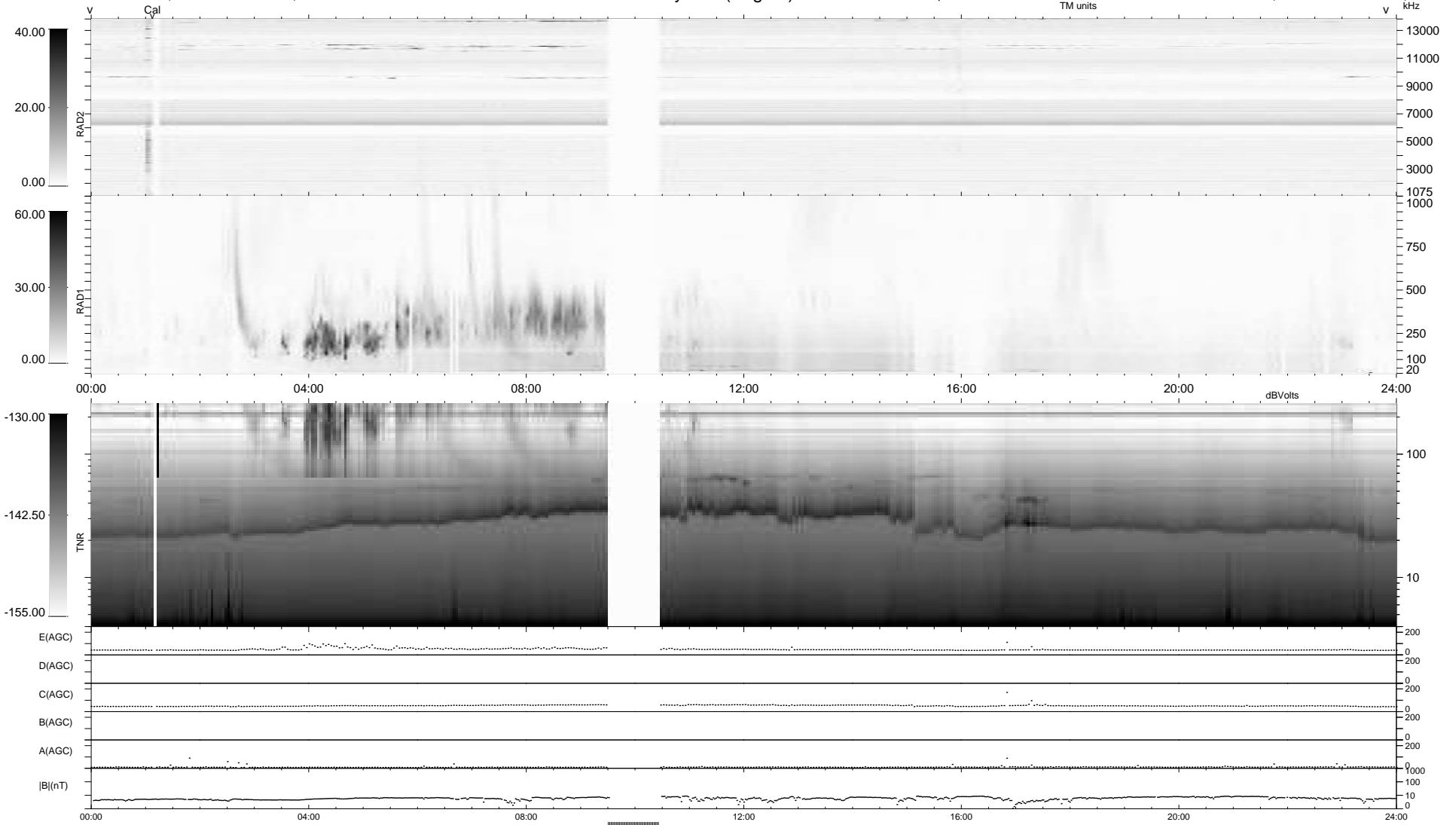
14 bad + 889 good MF/940MF projected (94%) - 37 missing MFs  
 Avg interval = 180 secs  
 Re = 257.77 (256.45, -8.24, 24.70 GSE)

windlib 2.0b

LZ version = v02

### WIND/WAVES Summary Plot (Page 1) for 22-NOV-2010, DOY = 326

DAILY 2010-11-23 16:35:06  
 Re = 257.73 (256.27, -11.80, 24.66 GSE)



```

RAD2
Antenna  Ey .....
Mode     LIN(1) .....
SUM/SEP  SEP .....
Toggle   OFF .....

RAD1
Antenna  Ex .....
Mode     LIS(2,4) .....
SUM/SEP  SUM .....
Toggle   OFF .....

TNR
Antenna  ExEy .....
Mode     A-32 .....
Sweep    ACE .....
  
```