

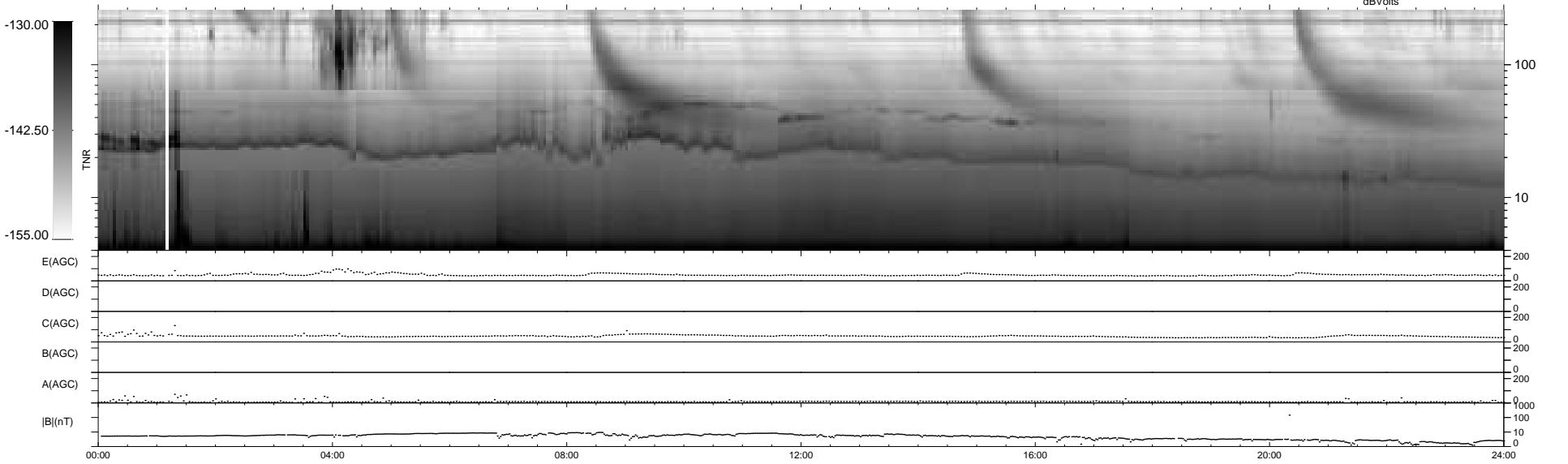
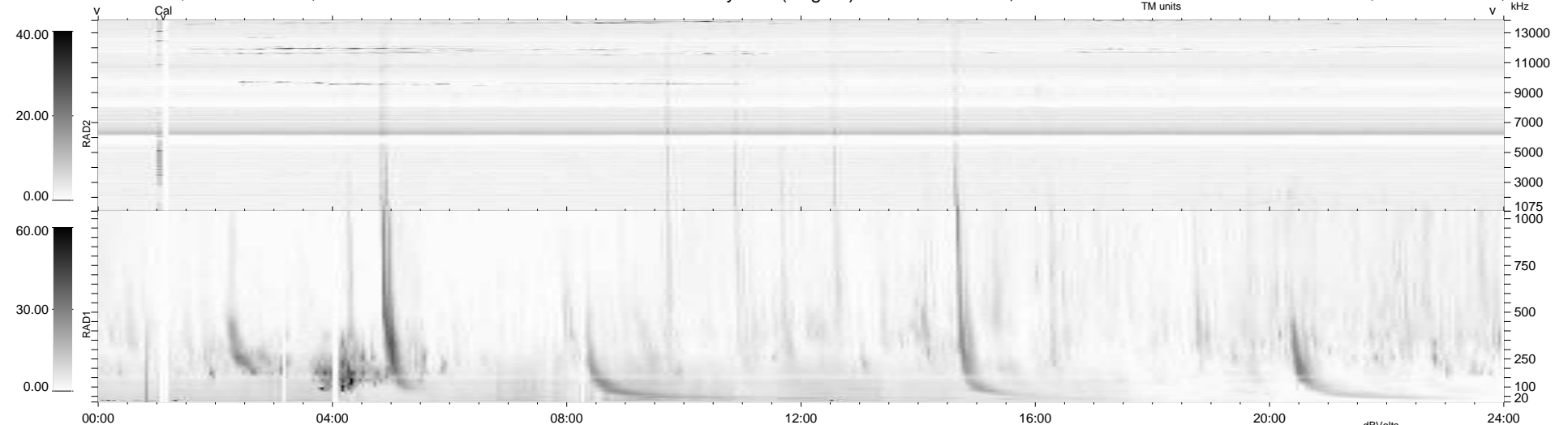
14 bad + 925 good MF/939MF projected (98%) - 0 missing MFs  
 Avg interval = 180 secs  
 Re = 258.16 (256.92, 6.10, 24.60 GSE)

windlib 2.0b

LZ version = v01

### WIND/WAVES Summary Plot (Page 1) for 18-NOV-2010, DOY = 322

DAILY 2010-11-22 12:43:44  
 Re = 258.03 (256.84, 2.56, 24.67 GSE)



E(AGC) .....  
 D(AGC) .....  
 C(AGC) .....  
 B(AGC) .....  
 A(AGC) .....  
 |B|(nT) .....  
 00:00 .....  
 04:00 .....  
 08:00 .....  
 12:00 .....  
 16:00 .....  
 20:00 .....  
 24:00 .....

**RAD2**  
 Antenna Ey .....  
 Mode LIN(1) .....  
 SUM/SEP SEP .....  
 Toggle OFF .....  
**RAD1**  
 Antenna Ex .....  
 Mode LIS(2,4) .....  
 SUM/SEP SUM .....  
 Toggle OFF .....  
**TNR**  
 Antenna ExEy .....  
 Mode A-32 .....  
 Sweep ACE .....