

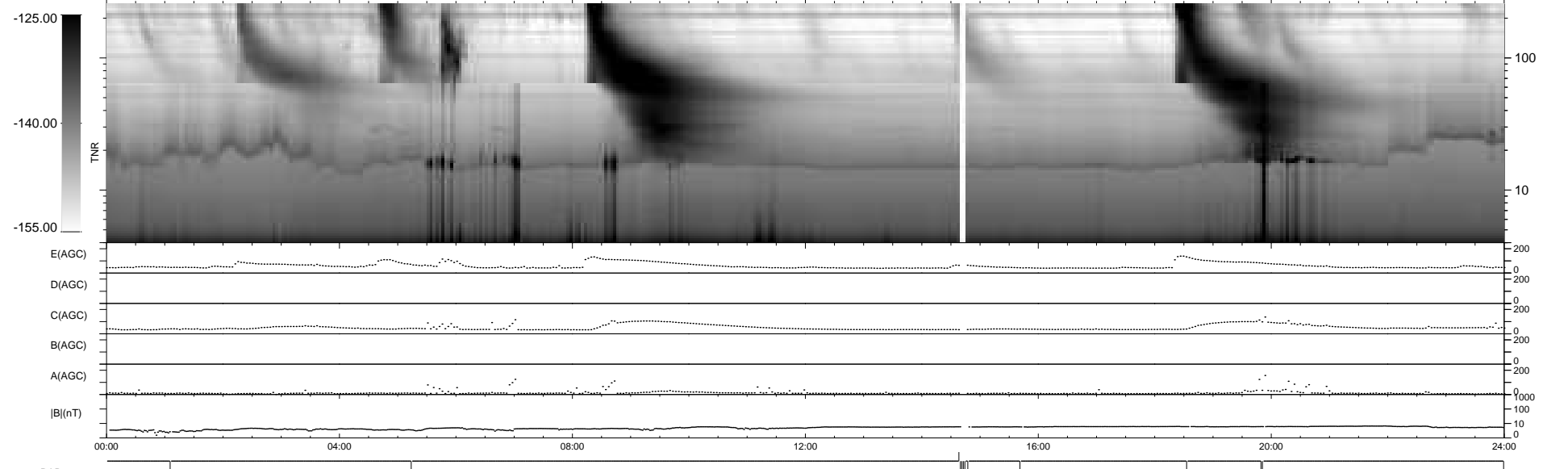
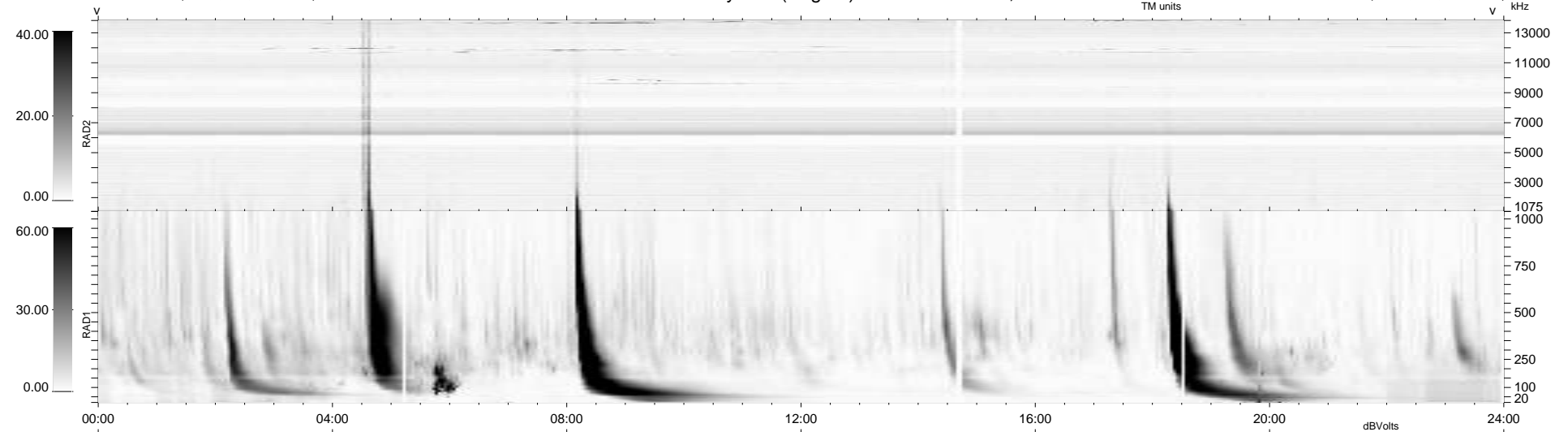
12 bad + 926 good MF/939MF projected (98%) - 1 missing MF  
 Avg interval = 180 secs  
 Re = - 258.31 (256.96, 9.64, 24.51 GSE)

windlib 2.0b

LZ version = v02

### WIND/WAVES Summary Plot (Page 1) for 17-NOV-2010, DOY = 321

DAILY 2010-11-23 11:43:07  
 Re = 258.16 (256.92, 6.12, 24.60 GSE)



RAD2  
 Antenna Ey .....  
 Mode LIN(1) .....  
 SUM/SEP SEP .....  
 Toggle OFF .....  
 RAD1  
 Antenna Ex .....  
 Mode LIS(2,4) .....  
 SUM/SEP SUM .....  
 Toggle OFF .....  
 TNR  
 Antenna ExEy .....  
 Mode A-32 .....  
 Sweep ACE .....