

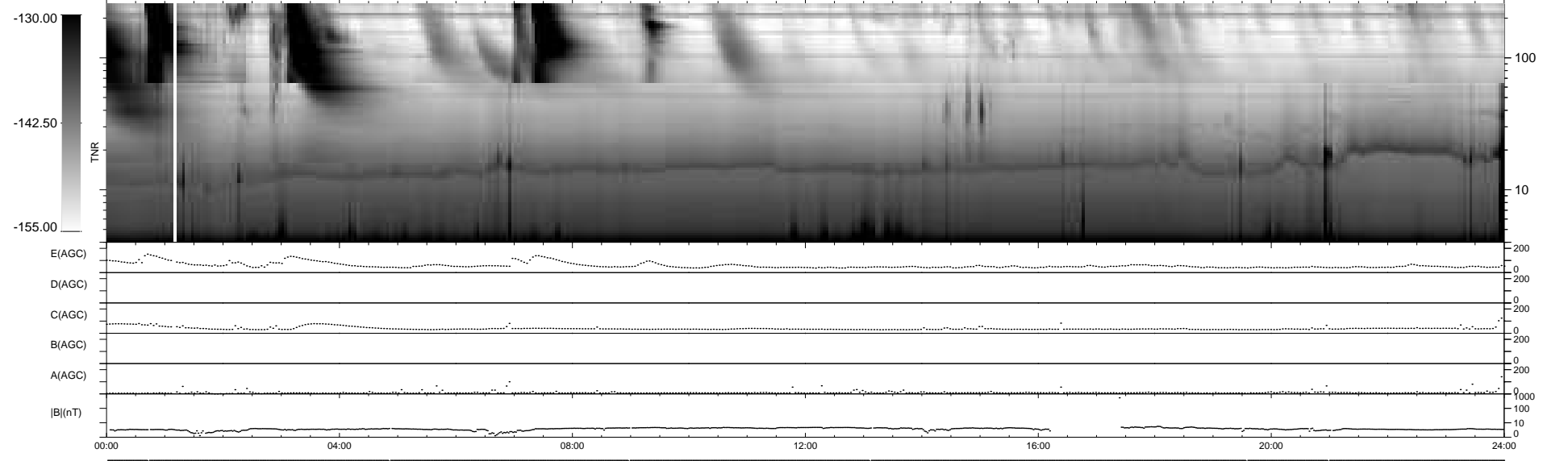
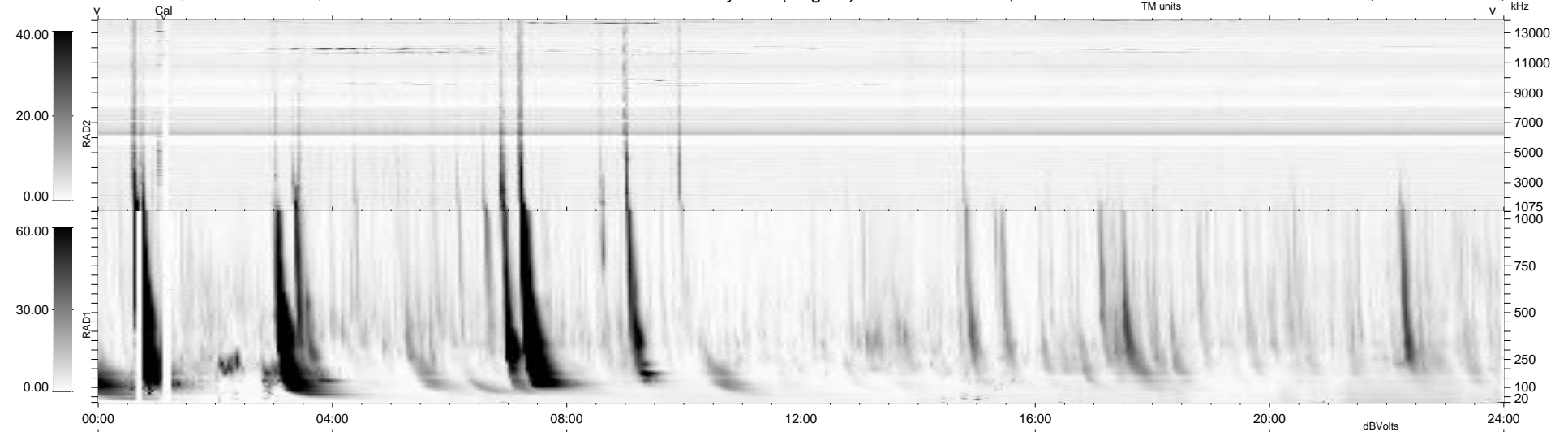
6 bad + 933 good MF/939MF projected (99%) - 0 missing MFs
 Avg interval = 180 secs
 Re = 258.46 (256.97, 13.14, 24.39 GSE)

windlib 2.0b

LZ version = v03

WIND/WAVES Summary Plot (Page 1) for 16-NOV-2010, DOY = 320

DAILY 2010-11-23 15:35:06
 Re = 258.31 (256.96, 9.66, 24.51 GSE)



RAD2
 Antenna Ey
 Mode LIN(1)
 SUM/SEP SEP
 Toggle OFF
 RAD1
 Antenna Ex
 Mode LIS(2,4)
 SUM/SEP SUM
 Toggle OFF
 TNR
 Antenna ExEy
 Mode A-32
 Sweep ACE