

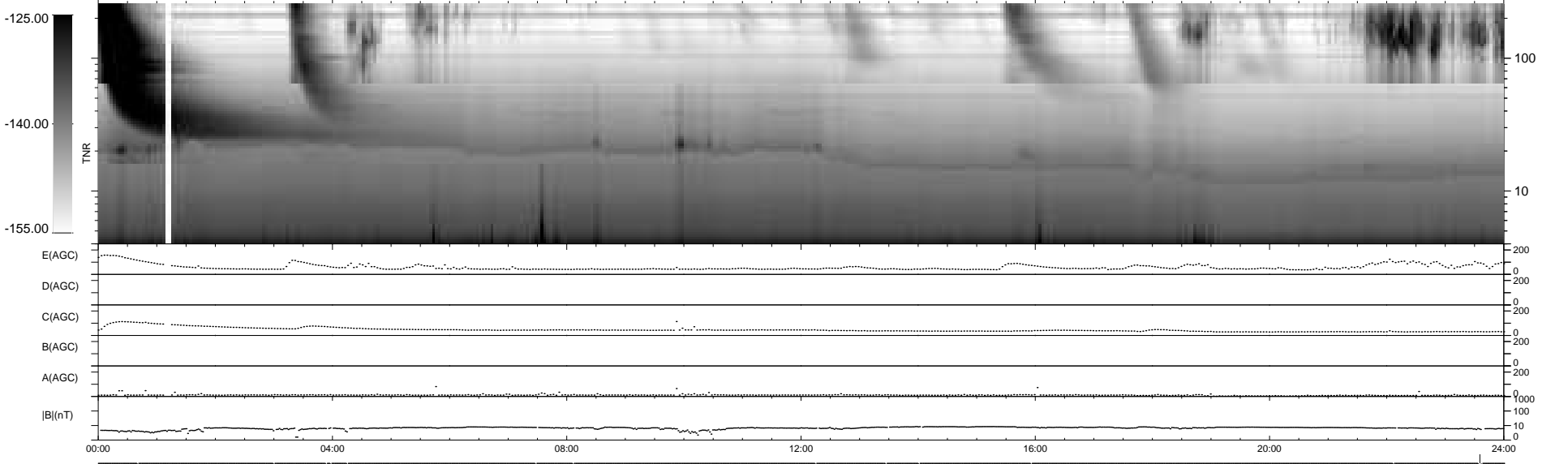
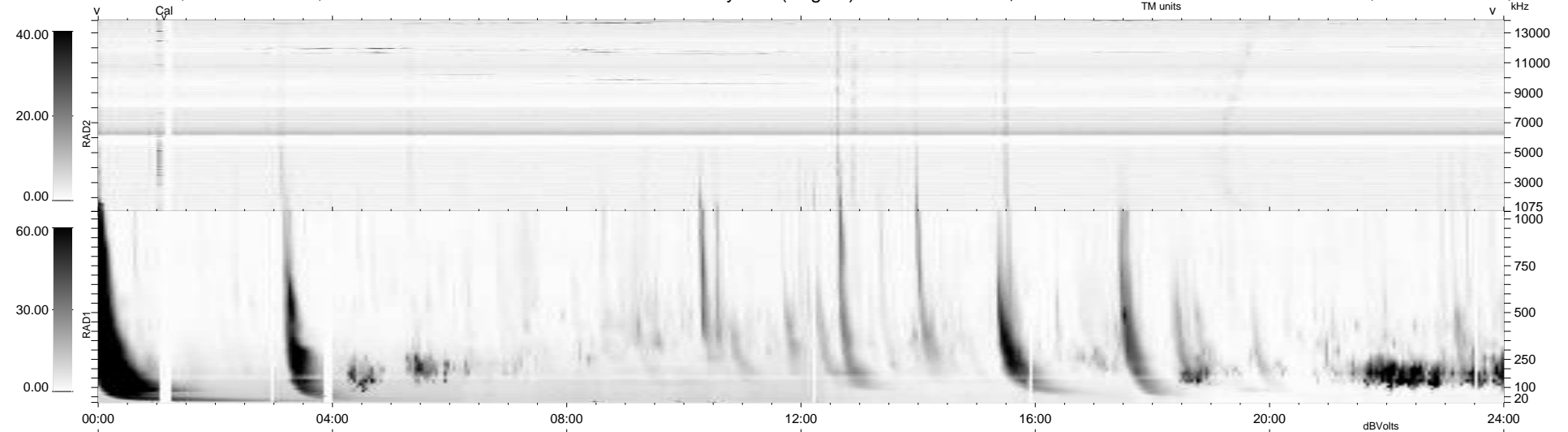
14 bad + 925 good MF/940MF projected (98%) - 1 missing MF  
 Avg interval = 180 secs  
 Re = 258.76 (256.85, 20.01, 24.07 GSE)

windlib 2.0b

LZ version = v04

### WIND/WAVES Summary Plot (Page 1) for 14-NOV-2010, DOY = 318

DAILY 2010-11-23 13:43:08  
 Re = 258.61 (256.93, 16.63, 24.24 GSE)



RAD2  
 Antenna Ey .....  
 Mode LIN(1) .....  
 SUM/SEP SEP .....  
 Toggle OFF .....  
 RAD1  
 Antenna Ex .....  
 Mode LIS(2,4) .....  
 SUM/SEP SUM .....  
 Toggle OFF .....  
 TNR  
 Antenna ExEy .....  
 Mode A-32 .....  
 Sweep ACE .....