

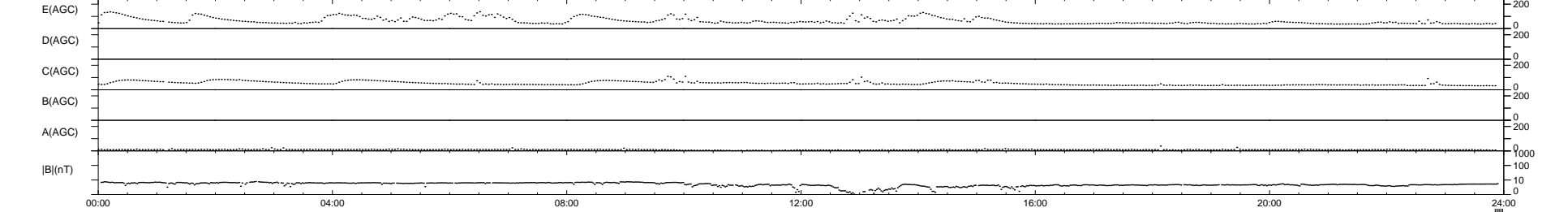
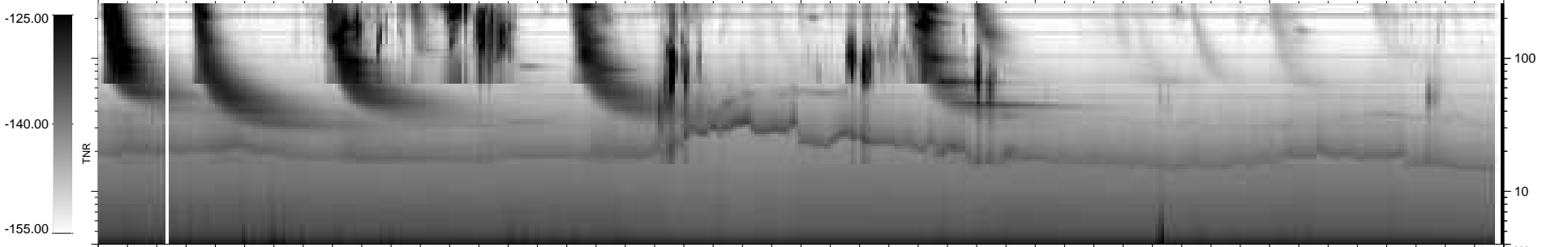
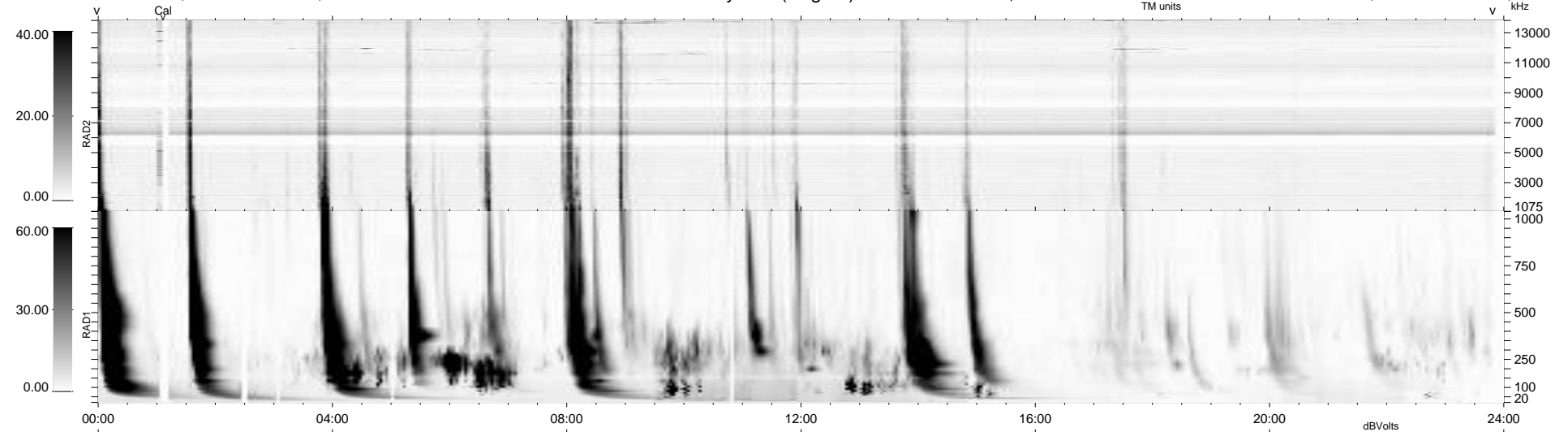
12 bad + 921 good MF/939MF projected (98%) - 6 missing MFs
 Avg interval = 180 secs
 Re = 259.01 (256.54, 26.68, 23.64 GSE)

windlib 2.0b

LZ version = v01

WIND/WAVES Summary Plot (Page 1) for 12-NOV-2010, DOY = 316

DAILY 2010-11-15 15:31:19
 Re = 258.89 (256.72, 23.40, 23.87 GSE)



RAD2
 Antenna Ey
 Mode LIN(1)
 SUM/SEP SEP
 Toggle OFF
 RAD1
 Antenna Ex
 Mode LIS(2/4)
 SUM/SEP SUM
 Toggle OFF
 TNR
 Antenna ExEy
 Mode A-32
 Sweep ACE