

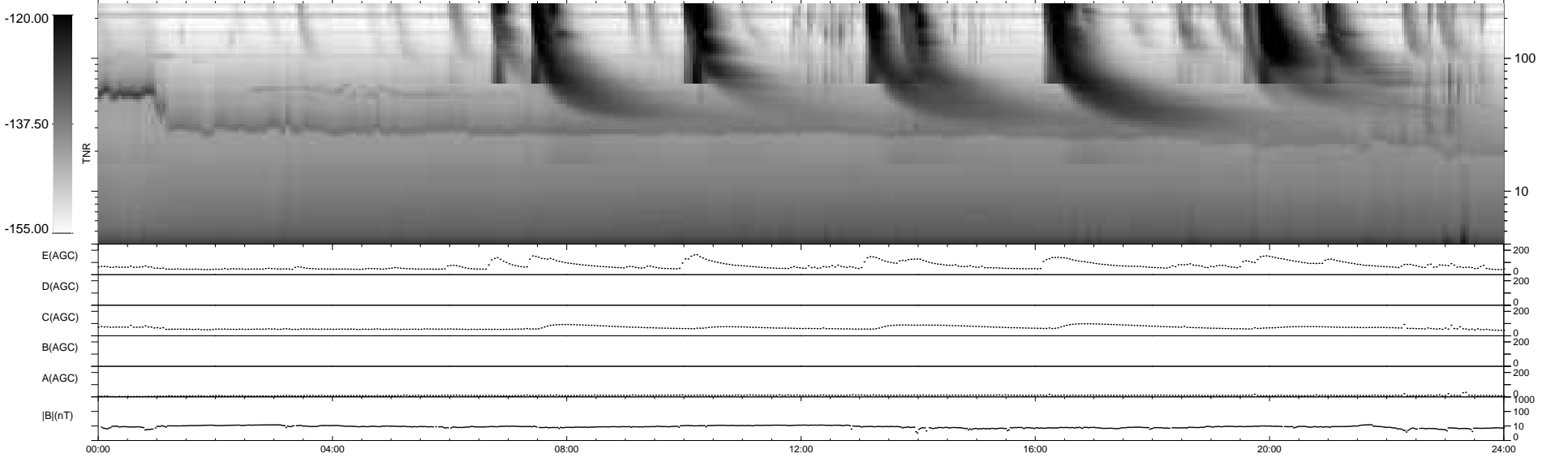
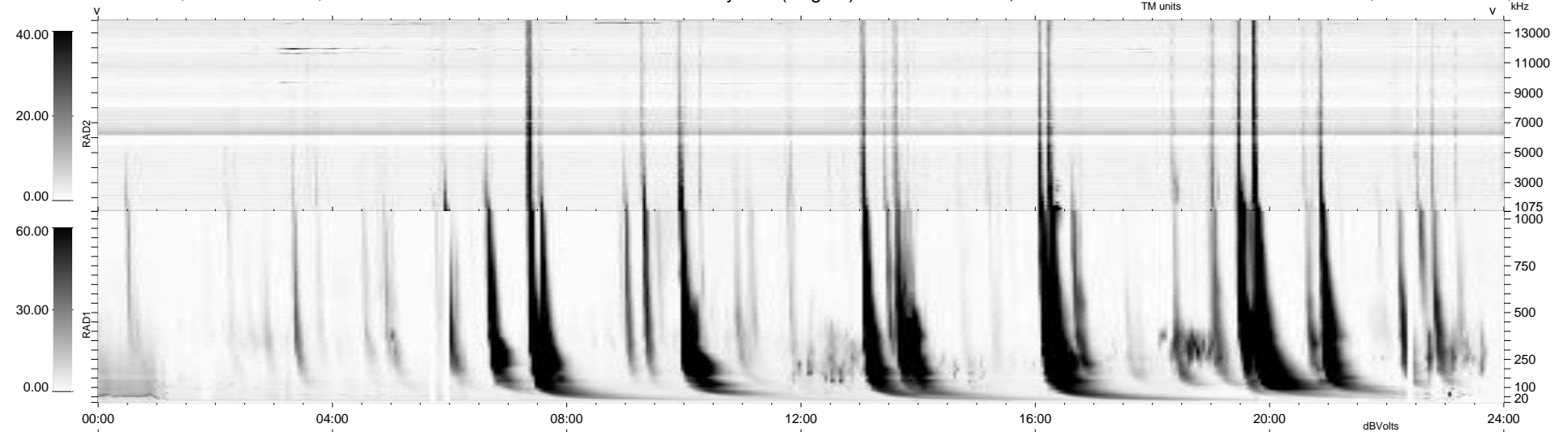
13 bad + 926 good MF/939MF projected (98%) - 0 missing MFs  
 Avg interval = 180 secs  
 Re = 259.09 (256.30, 29.92, 23.39 GSE)

windlib 2.0b

LZ version = v03

### WIND/WAVES Summary Plot (Page 1) for 11-NOV-2010, DOY = 315

DAILY 2010-11-16 20:43:08  
 Re = 259.01 (256.54, 26.70, 23.64 GSE)



RAD2  
 Antenna Ey  
 Mode LIN(1)  
 SUM/SEP SEP  
 Toggle OFF

RAD1  
 Antenna Ex  
 Mode LIS(2,4)  
 SUM/SEP SUM  
 Toggle OFF

TNR  
 Antenna ExEy  
 Mode A-32  
 Sweep ACE