

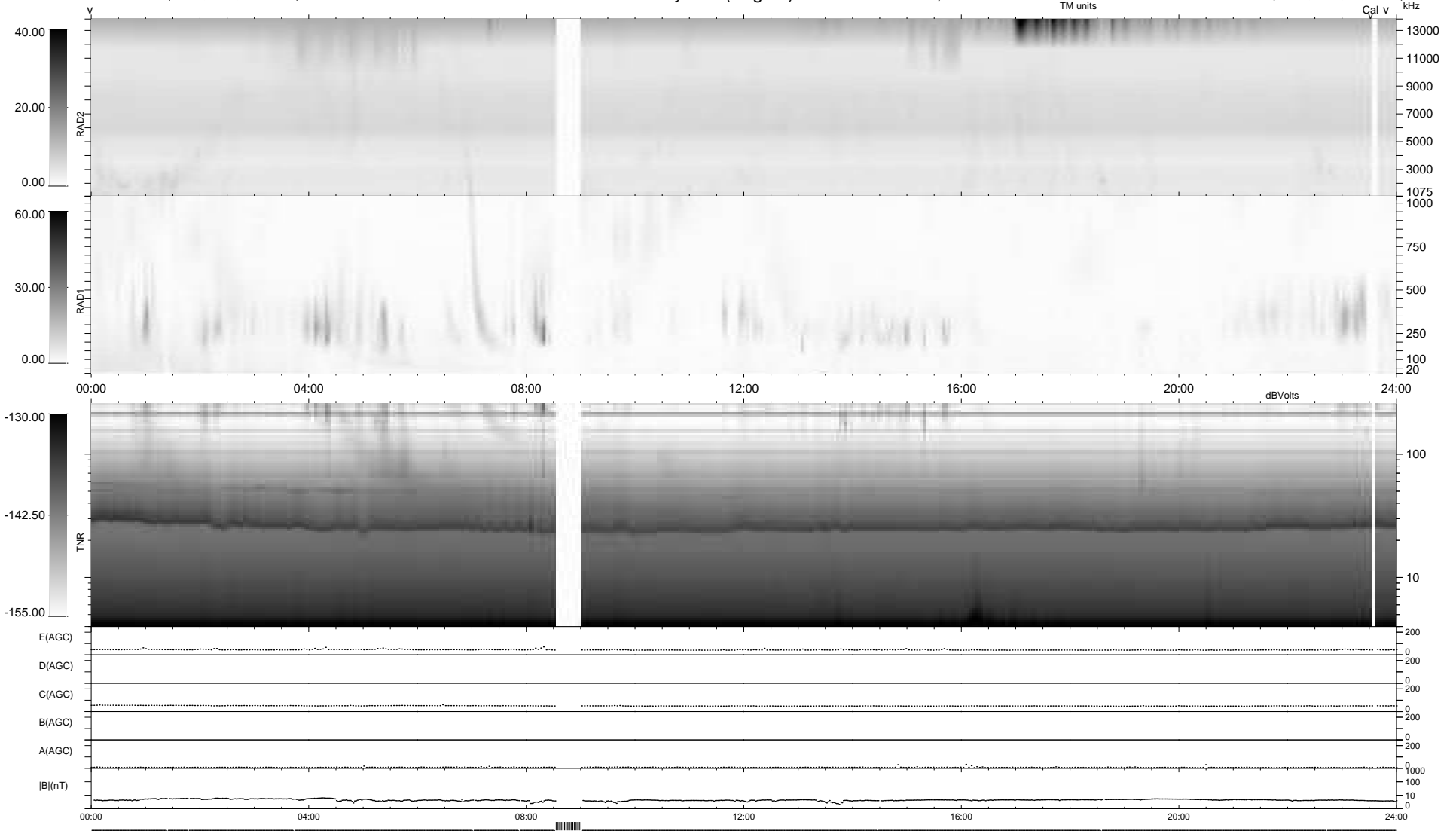
10 bad + 911 good MF/939MF projected (97%) - 18 missing MFs
 Avg interval = 180 secs
 Re = 258.19 (251.71, 53.65, 20.62 GSE)

windlib 2.0b

LZ version = v01

WIND/WAVES Summary Plot (Page 1) for 03-NOV-2010, DOY = 307

DAILY 2010-11-15 15:23:17
 Re = 258.48 (252.54, 50.89, 21.03 GSE)



```

RAD2
Antenna  Ey .....
Mode     LIS(0,0) .....
SUM/SEP SUM .....
Toggle   OFF .....

RAD1
Antenna  Ex .....
Mode     LIS(0,0) .....
SUM/SEP SUM .....
Toggle   OFF .....

TNR
Antenna  ExEy .....
Mode     A-32 .....
Sweep    ACE .....
  
```