

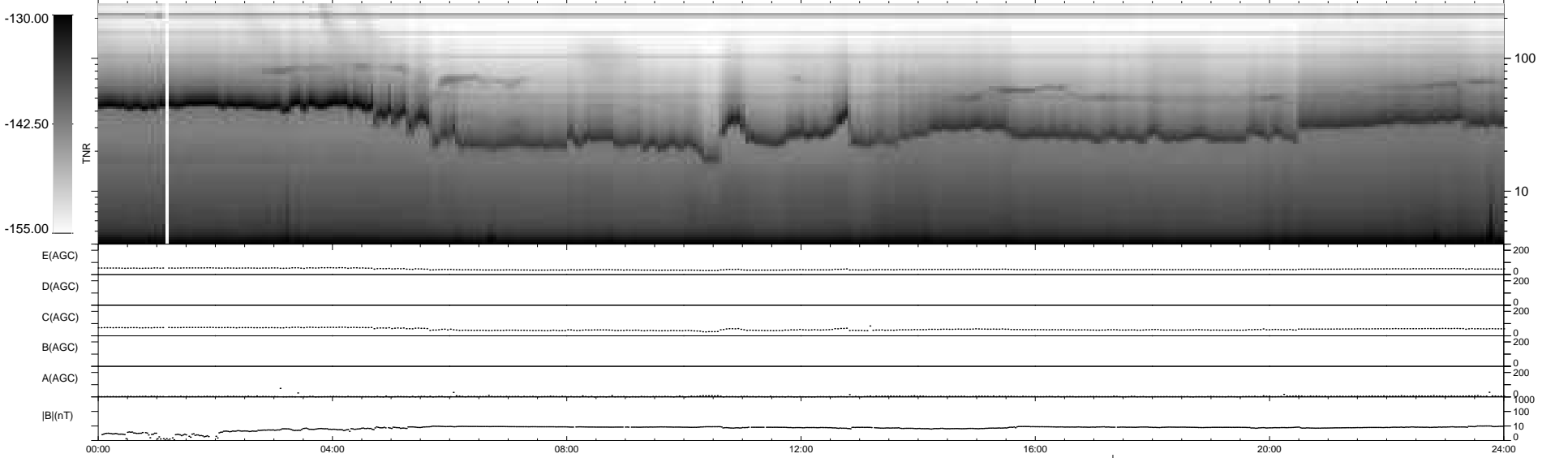
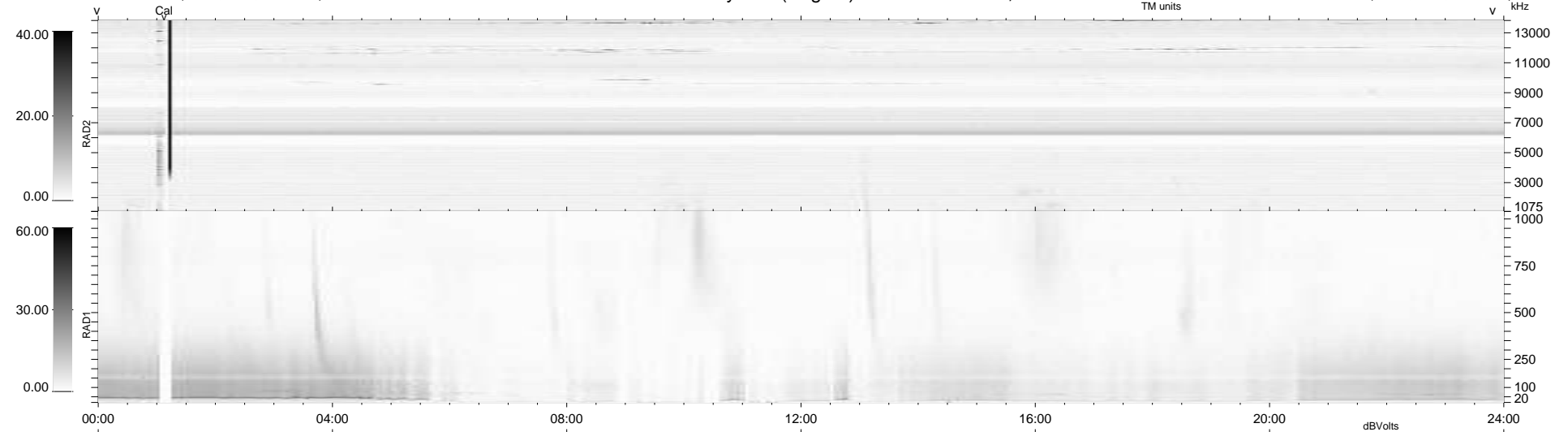
10 bad + 928 good MF/939MF projected (98%) - 1 missing MF
 Avg interval = 180 secs
 Re = 257.10 (248.83, 61.76, 19.28 GSE)

windlib 2.0b

LZ version = v01

WIND/WAVES Summary Plot (Page 1) for 31-OCT-2010, DOY = 304

DAILY 2010-11-04 15:27:12
 Re = 257.49 (249.83, 59.11, 19.74 GSE)



E(AGC) 0 200
 D(AGC) 0 200
 C(AGC) 0 200
 B(AGC) 0 200
 A(AGC) 0 200
 |B|(nT) 0 1000
 0 100
 0 10
 0 0

RAD2
 Antenna Ey
 Mode LIN(1)
 SUM/SEP SEP
 Toggle OFF
 RAD1
 Antenna Ex
 Mode LIS(2,4)
 SUM/SEP SUM
 Toggle OFF
 TNR
 Antenna ExEy
 Mode A-32
 Sweep ACE