

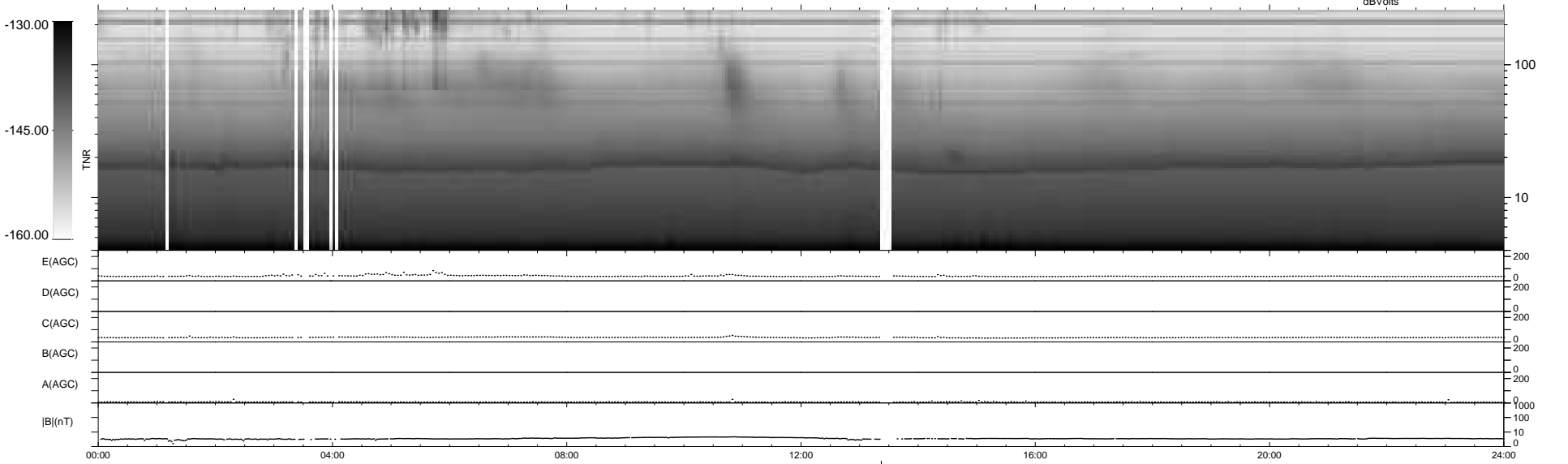
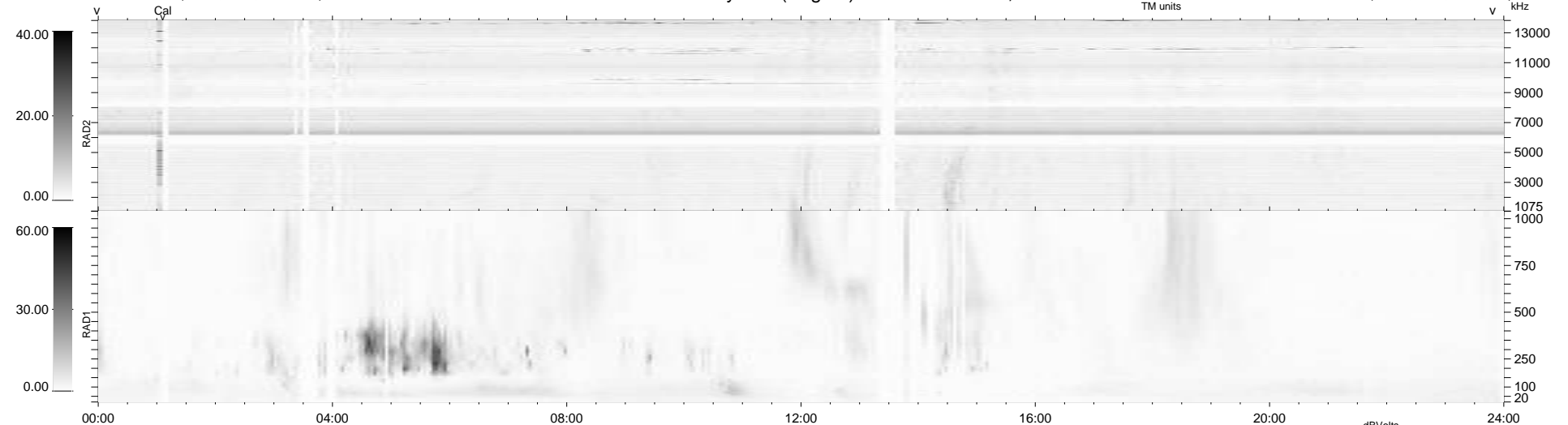
41 bad + 897 good MF/939MF projected (95%) - 1 missing MF  
 Avg interval = 180 secs  
 Re = 256.29 (246.71, 66.96, 18.30 GSE)

windlib 2.0b

LZ version = v01

### WIND/WAVES Summary Plot (Page 1) for 29-OCT-2010, DOY = 302

DAILY 2010-11-04 20:24:04  
 Re = 256.70 (247.77, 64.40, 18.80 GSE)



RAD2  
 Antenna Ey  
 Mode LIN(1)  
 SUM/SEP SEP  
 Toggle OFF

RAD1  
 Antenna Ex  
 Mode LIS(2,4)  
 SUM/SEP SUM  
 Toggle OFF

TNR  
 Antenna ExEy  
 Mode A-32  
 Sweep ACE