

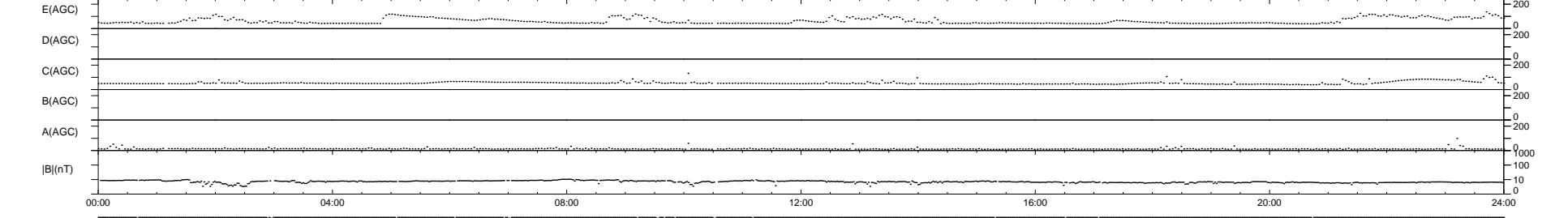
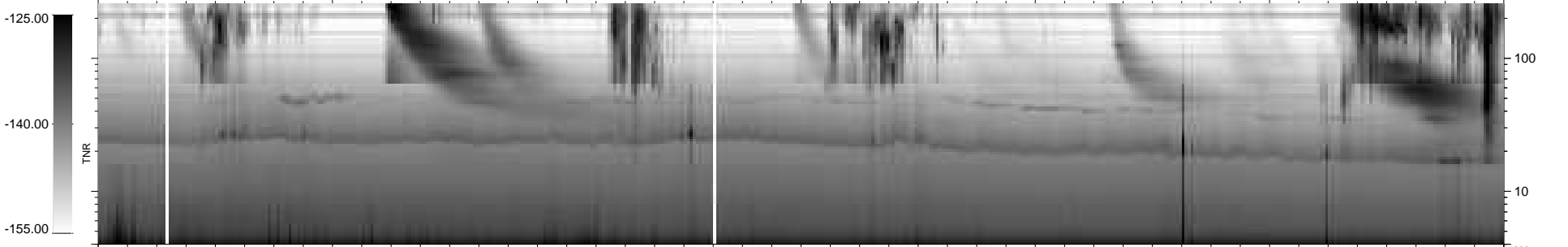
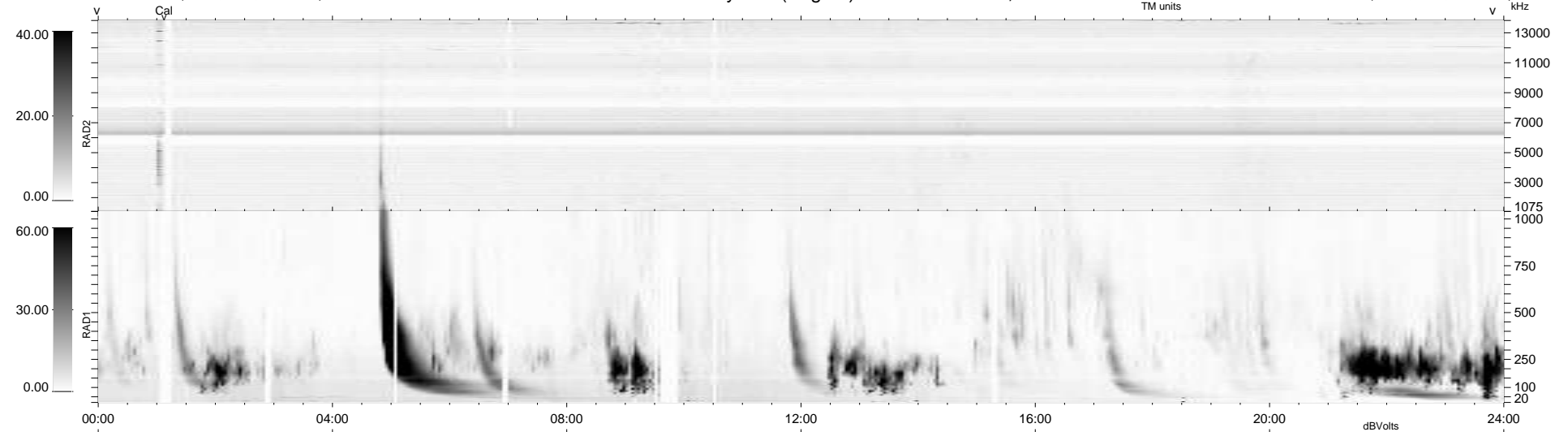
21 bad + 919 good MF/940MF projected (97%) - 0 missing MFs  
 Avg interval = 180 secs  
 Re = 253.89 (240.12, 81.13, 14.94 GSE)

windlib 2.0b

LZ version = v01

### WIND/WAVES Summary Plot (Page 1) for 23-OCT-2010, DOY = 296

DAILY 2010-11-04 15:24:23  
 Re = 254.27 (241.20, 78.98, 15.55 GSE)



RAD2  
 Antenna Ey  
 Mode LIN(1)  
 SUM/SEP SEP  
 Toggle OFF

RAD1  
 Antenna Ex  
 Mode LIS(2,4)  
 SUM/SEP SUM  
 Toggle OFF

TNR  
 Antenna ExEy  
 Mode A-32  
 Sweep ACE