

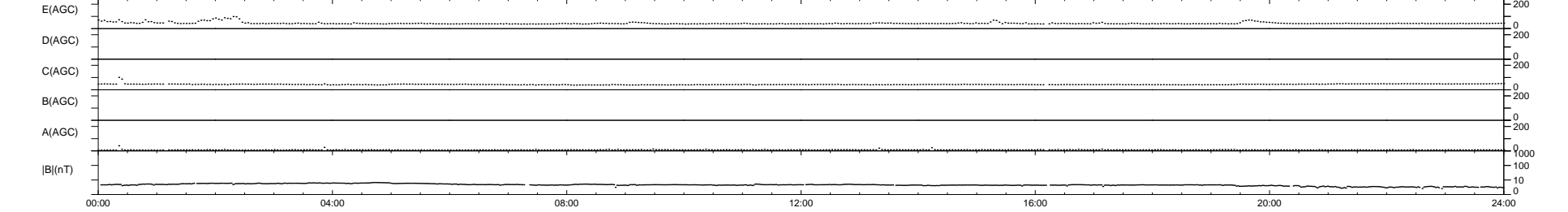
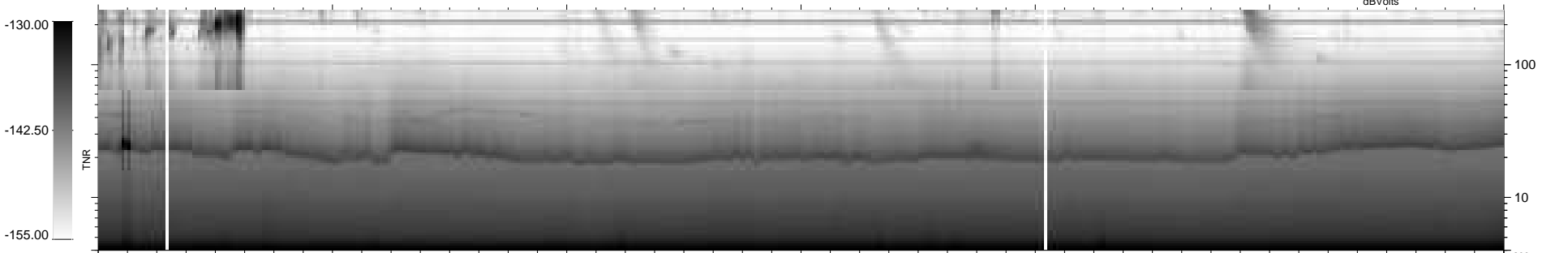
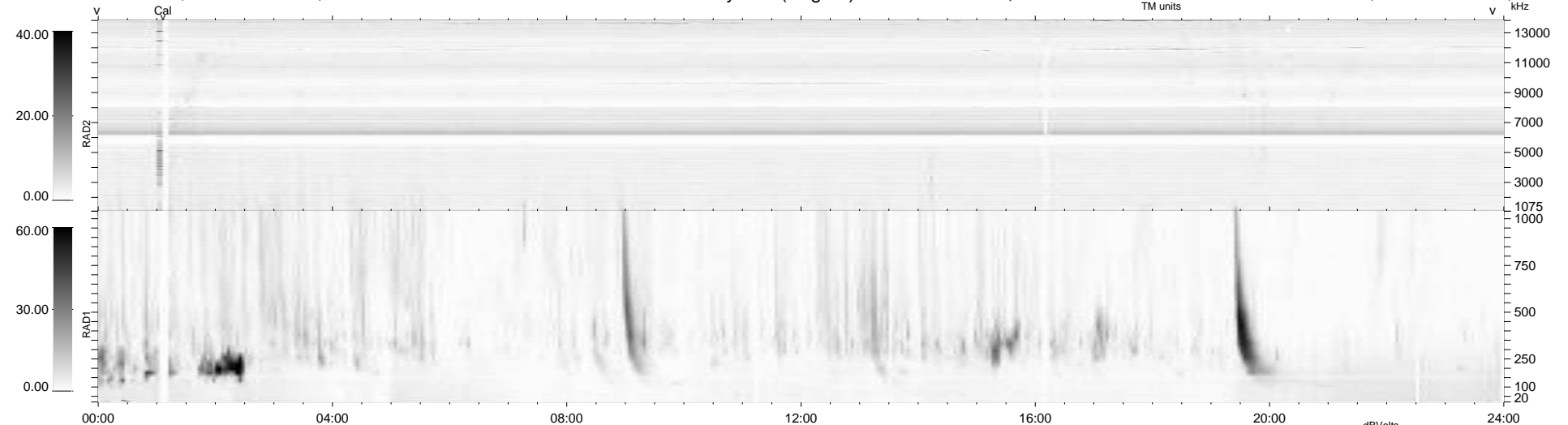
14 bad + 925 good MF/939MF projected (98%) - 0 missing MFs
 Avg interval = 180 secs
 Re = 253.13 (237.98, 85.16, 13.68 GSE)

windlib 2.0b

LZ version = v02

WIND/WAVES Summary Plot (Page 1) for 21-OCT-2010, DOY = 294

DAILY 2010-11-04 15:23:26
 Re = 253.51 (239.03, 83.21, 14.32 GSE)



```

RAD2
Antenna Ey .....
Mode LIN(1) .....
SUM/SEP SEP .....
Toggle OFF .....

RAD1
Antenna Ex .....
Mode LIS(2,4) .....
SUM/SEP SUM .....
Toggle OFF .....

TNR
Antenna ExEy .....
Mode A-32 .....
Sweep ACE .....
  
```