

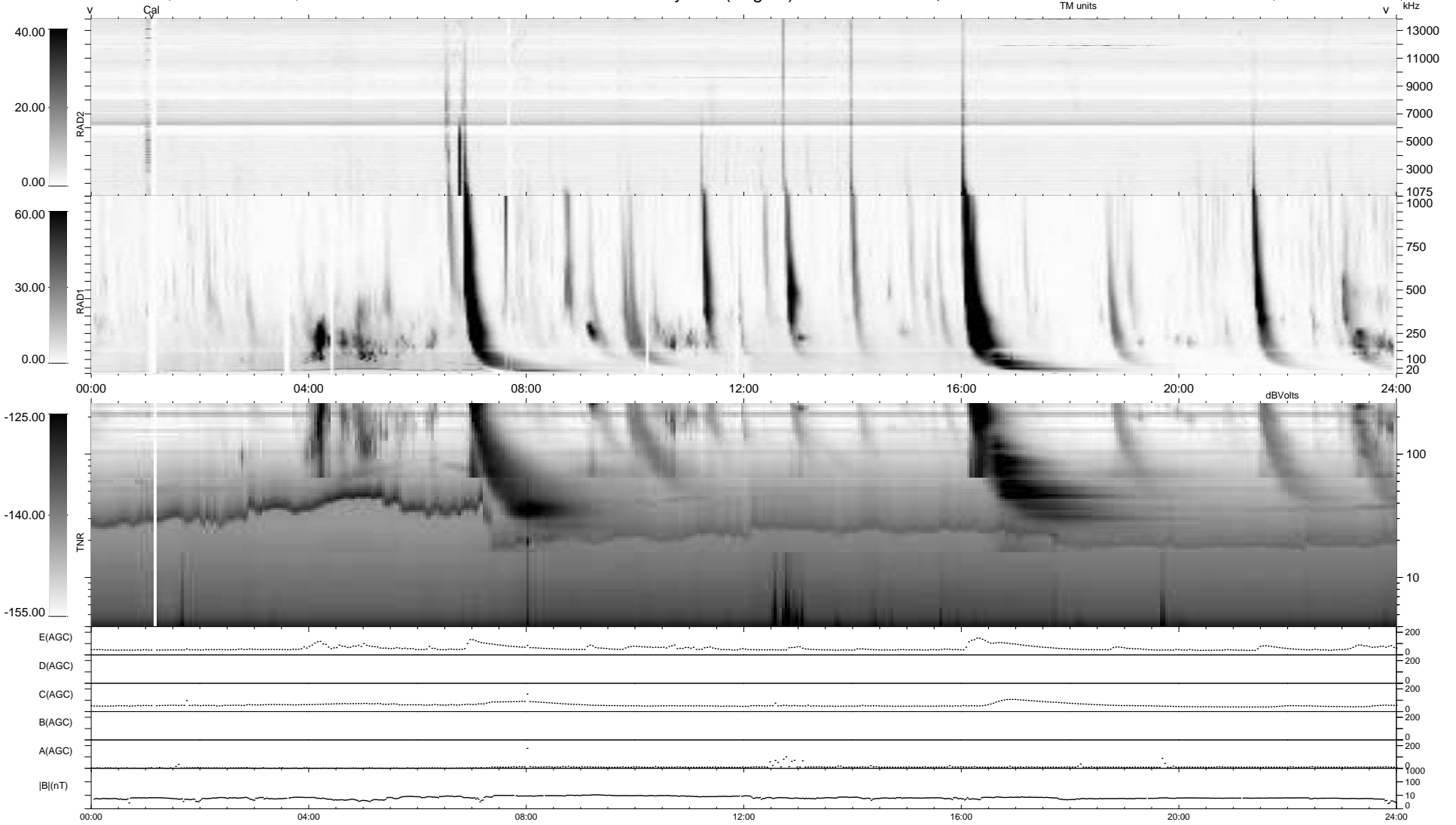
14 bad + 925 good MF/939MF projected (98%) - 0 missing MFs  
 Avg interval = 180 secs  
 Re = 252.33 (235.90, 88.74, 12.35 GSE)

windlib 2.0b

LZ version = v02

### WIND/WAVES Summary Plot (Page 1) for 19-OCT-2010, DOY = 292

DAILY 2010-10-27 17:35:14  
 Re = 252.73 (236.92, 87.02, 13.02 GSE)



RAD2  
 Antenna Ey .....  
 Mode LIN(1) .....  
 SUM/SEP SEP .....  
 Toggle OFF .....  
 RAD1  
 Antenna Ex .....  
 Mode LIS(2,4) .....  
 SUM/SEP SUM .....  
 Toggle OFF .....  
 TNR  
 Antenna ExEy .....  
 Mode A-32 .....  
 Sweep ACE .....