

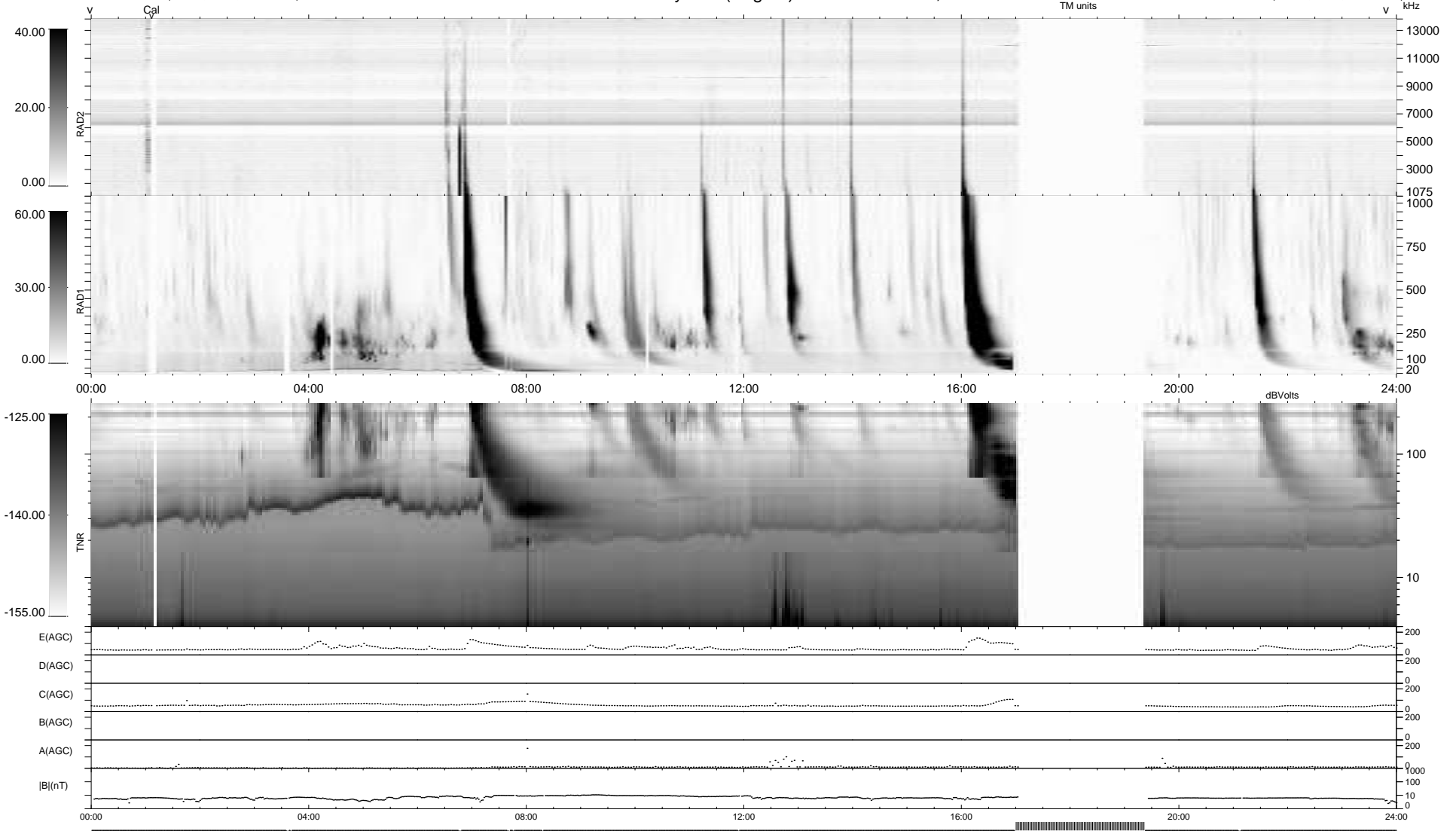
13 bad + 833 good MF/939MF projected (88%) - 93 missing MFs
 Avg interval = 180 secs
 Re = 252.33 (235.90, 88.74, 12.35 GSE)

windlib 2.0b

LZ version = v01

WIND/WAVES Summary Plot (Page 1) for 19-OCT-2010, DOY = 292

DAILY 2010-10-20 17:23:05
 Re = 252.73 (236.92, 87.02, 13.02 GSE)



RAD2
 Antenna Ey
 Mode LIN(1)
 SUM/SEP SEP
 Toggle OFF
 RAD1
 Antenna Ex
 Mode LIS(2/4)
 SUM/SEP SUM
 Toggle OFF
 TNR
 Antenna ExEy
 Mode A-32
 Sweep ACE