

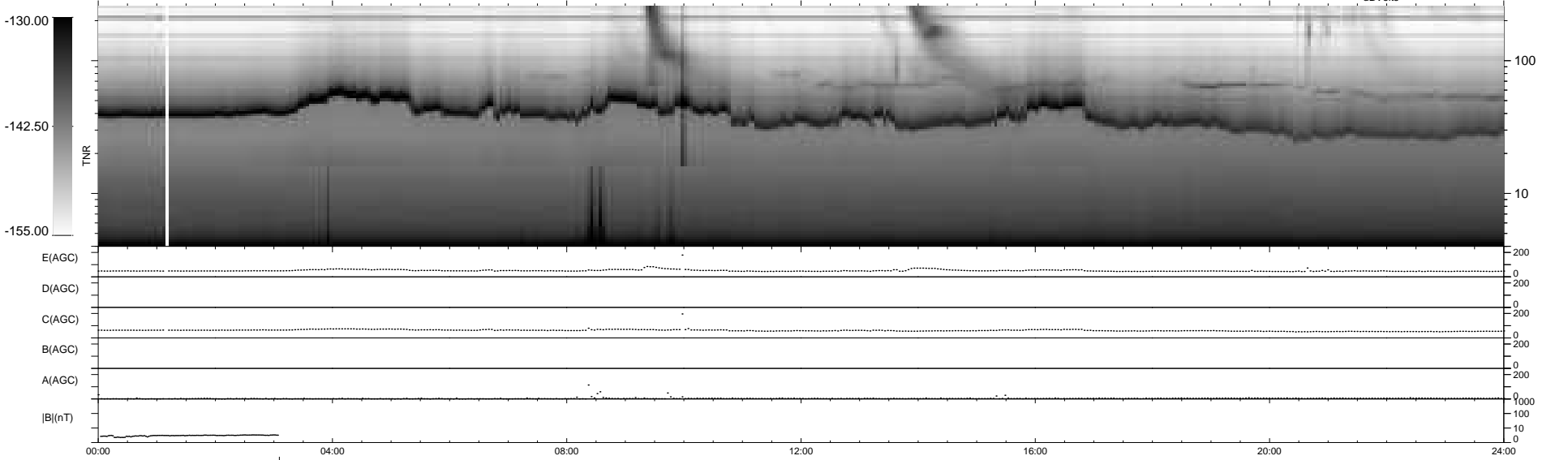
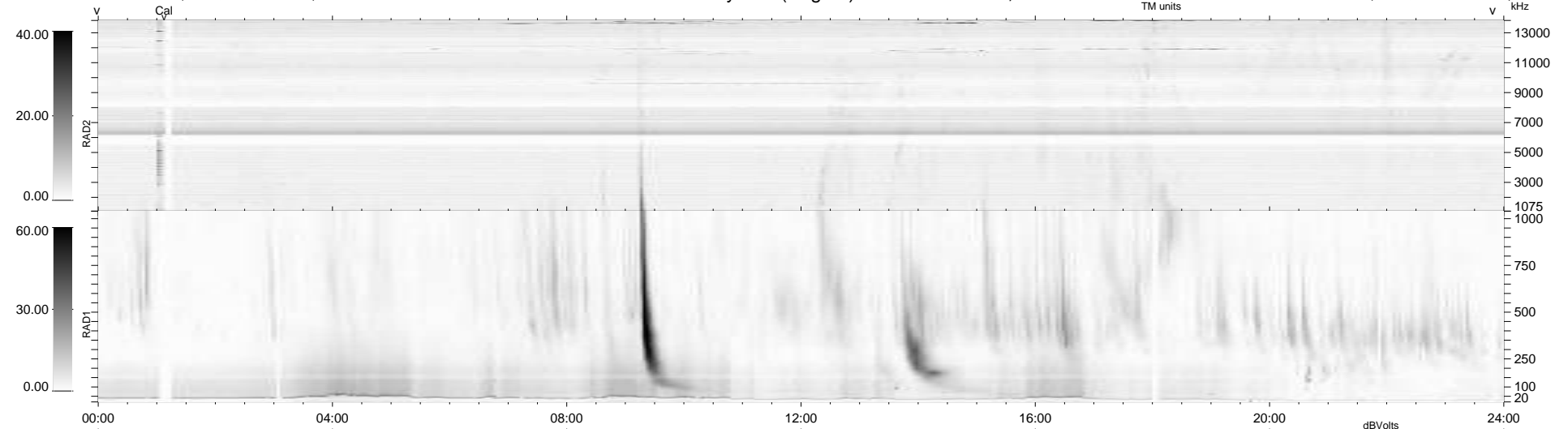
15 bad + 924 good MF/940MF projected (98%) - 1 missing MF  
 Avg interval = 180 secs  
 Re = 250.48 (231.85, 94.33, 9.50 GSE)

windlib 2.0b

LZ version = v02

### WIND/WAVES Summary Plot (Page 1) for 15-OCT-2010, DOY = 288

DAILY 2010-10-18 16:23:05  
 Re = 250.99 (232.84, 93.15, 10.23 GSE)



```

RAD2
Antenna Ey .....
Mode LIN(1) .....
SUM/SEP SEP .....
Toggle OFF .....

RAD1
Antenna Ex .....
Mode LIS(2,4) .....
SUM/SEP SUM .....
Toggle OFF .....

TNR
Antenna ExEy .....
Mode A-32 .....
Sweep ACE .....
  
```