

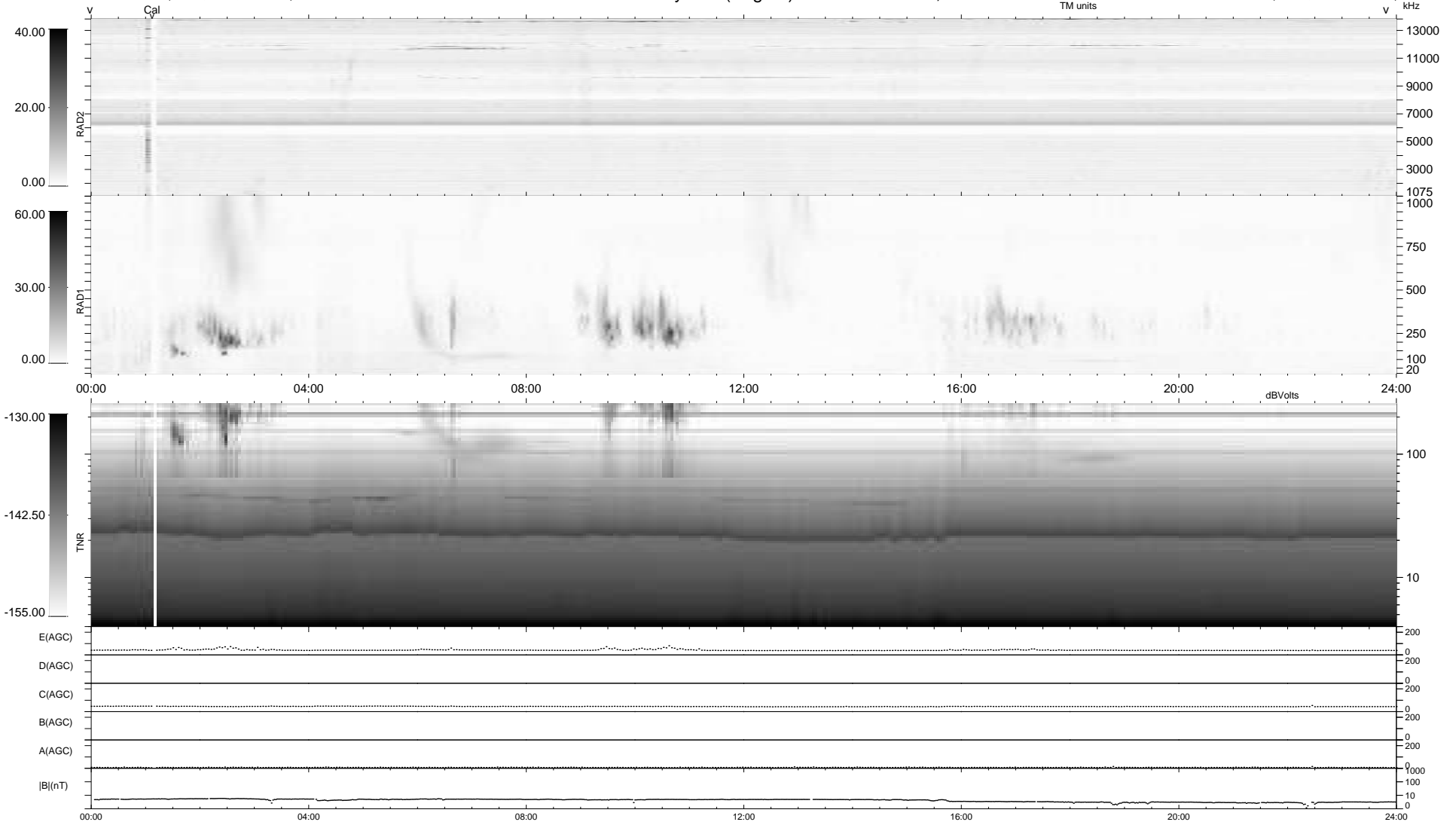
12 bad + 927 good MF/939MF projected (98%) - 0 missing MFs
 Avg interval = 180 secs
 Re = 246.29 (225.69, 98.47, 4.95 GSE)

windlib 2.0b

LZ version = v01

WIND/WAVES Summary Plot (Page 1) for 09-OCT-2010, DOY = 282

DAILY 2010-10-27 17:25:52
 Re = 247.14 (226.75, 98.14, 5.72 GSE)



```

RAD2
Antenna Ey .....
Mode LIN(1) .....
SUM/SEP SEP .....
Toggle OFF .....

RAD1
Antenna Ex .....
Mode LIS(2,4) .....
SUM/SEP SUM .....
Toggle OFF .....

TNR
Antenna ExEy .....
Mode A-32 .....
Sweep ACE .....
  
```