

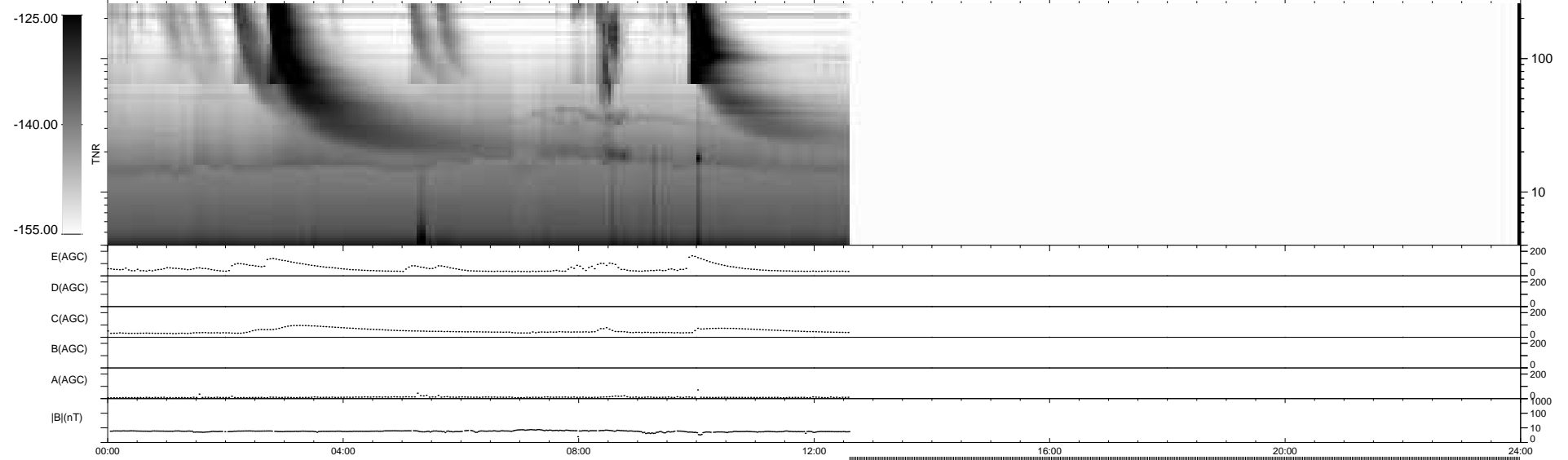
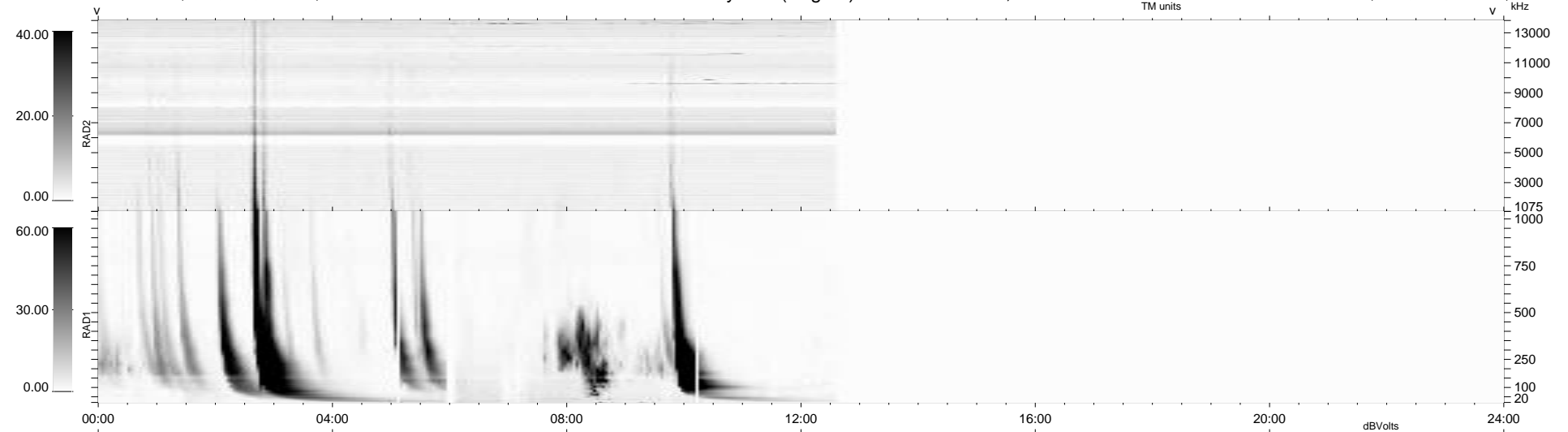
11 bad + 482 good MF/939MF projected (51%) - 446 missing MFs
 Avg interval = 180 secs
 Re = -233.67 (213.39, 95.16, -3.56 GSE)

windlib 2.0b

LZ version = v01

WIND/WAVES Summary Plot (Page 1) for 28-SEP-2010, DOY = 271

DAILY 2010-09-29 18:24:35
 Re = 234.91 (214.41, 95.92, -2.80 GSE)



```

RAD2
Antenna Ey .....
Mode LIN(1) .....
SUM/SEP SEP .....
Toggle OFF .....

RAD1
Antenna Ex .....
Mode LIS(2,4) .....
SUM/SEP SUM .....
Toggle OFF .....

TNR
Antenna ExEy .....
Mode A-32 .....
Sweep ACE .....
  
```