

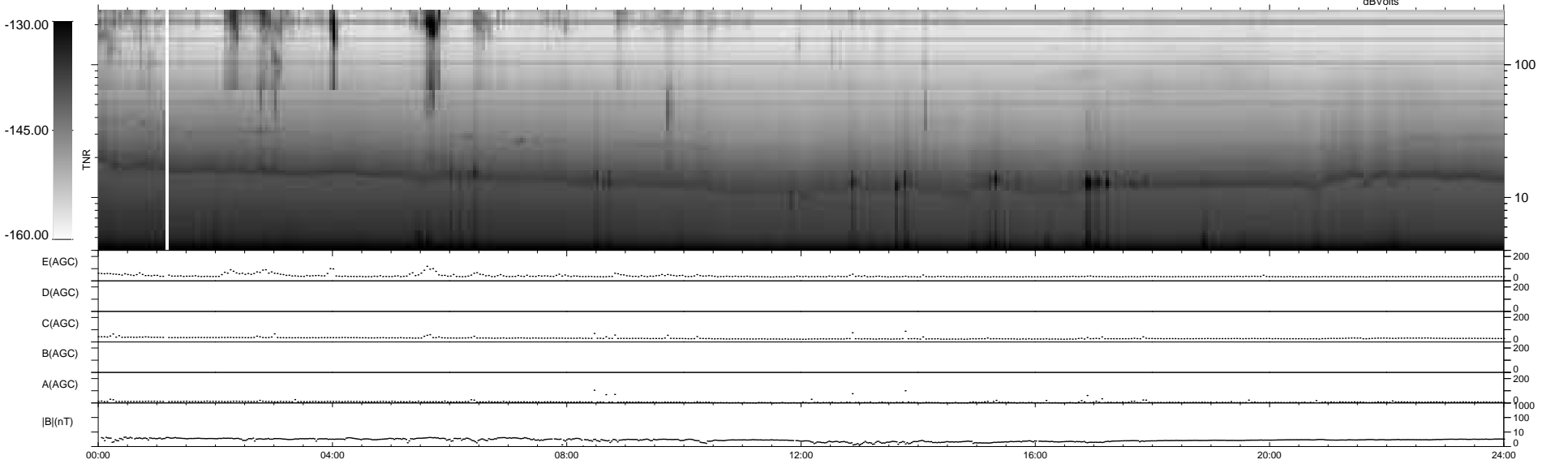
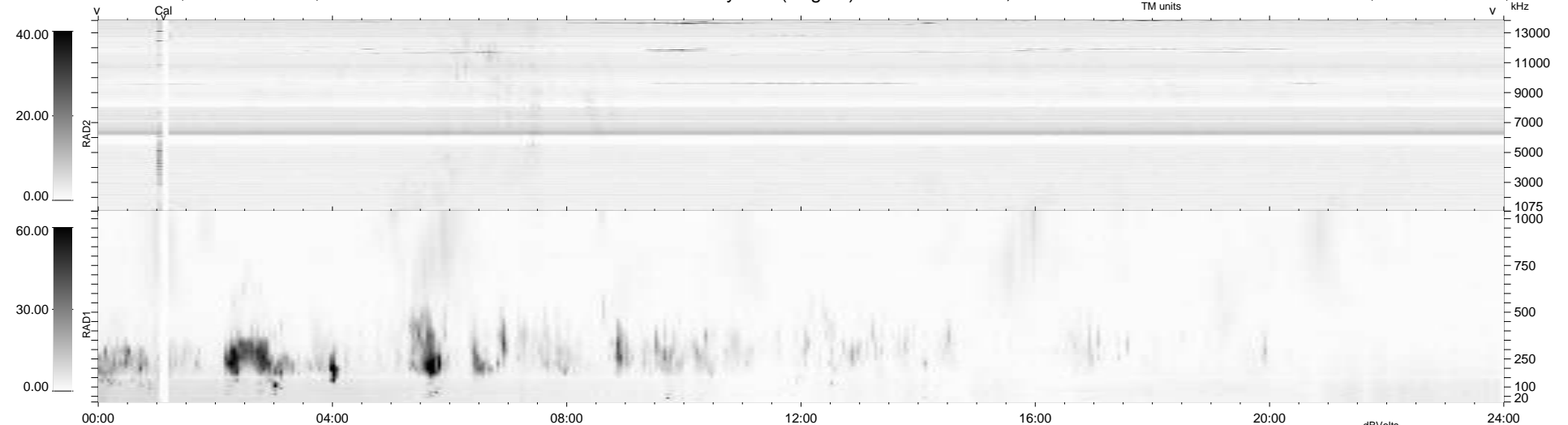
4 bad + 935 good MF/939MF projected (99%) - 0 missing MFs  
 Avg interval = 180 secs  
 Re = 230.01 (210.60, 92.31, -5.85 GSE)

windlib 2.0b

LZ version = v01

### WIND/WAVES Summary Plot (Page 1) for 25-SEP-2010, DOY = 268

DAILY 2010-09-26 20:23:06  
 Re = 231.21 (211.47, 93.35, -5.09 GSE)



RAD2  
 Antenna Ey .....  
 Mode LIN(1) .....  
 SUM/SEP SEP .....  
 Toggle OFF .....  
 RAD1  
 Antenna Ex .....  
 Mode LIS(2,4) .....  
 SUM/SEP SUM .....  
 Toggle OFF .....  
 TNR  
 Antenna ExEy .....  
 Mode A-32 .....  
 Sweep ACE .....