

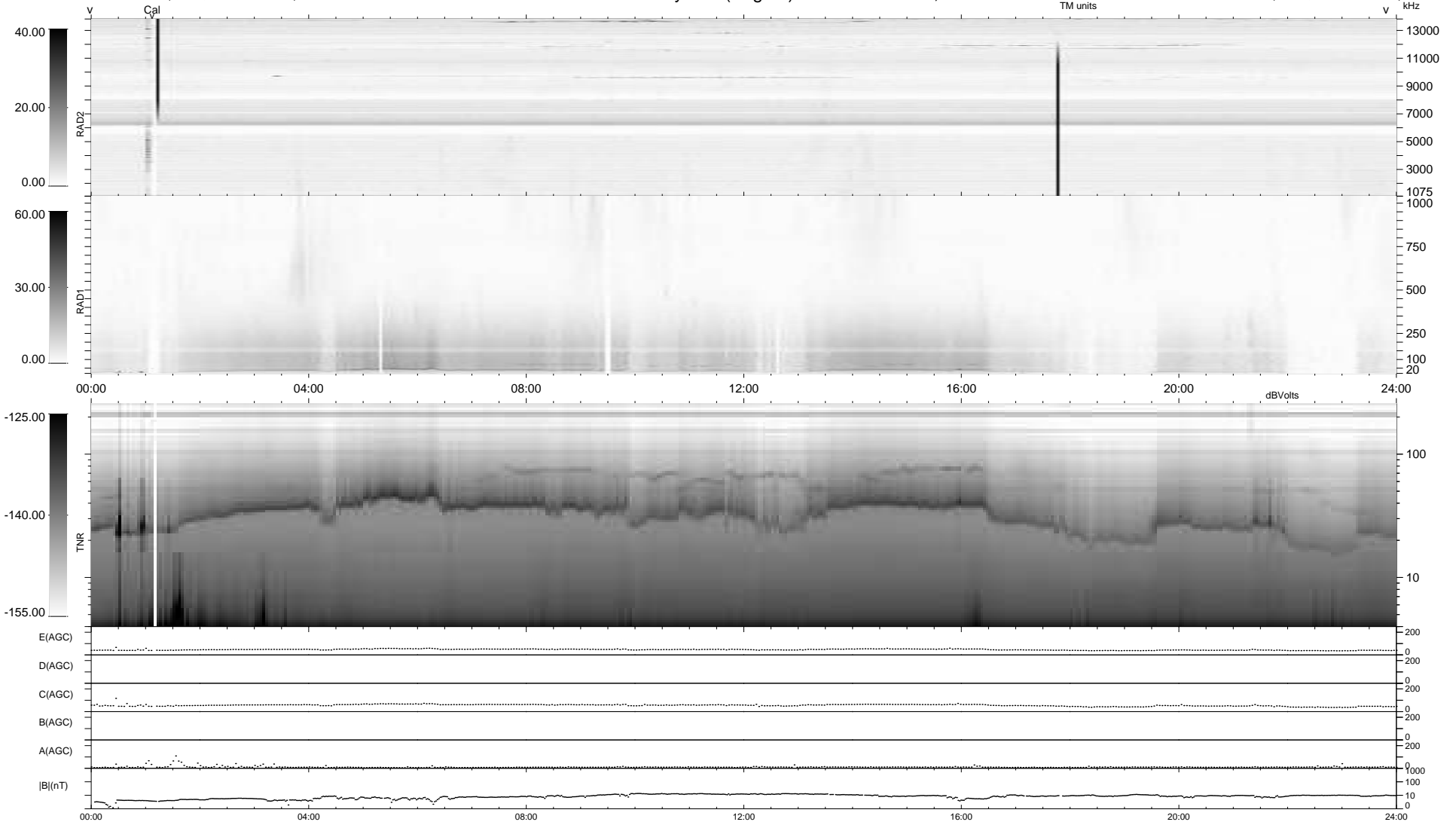
13 bad + 926 good MF/939MF projected (98%) - 0 missing MFs
 Avg interval = 180 secs
 Re = 227.64 (209.02, 89.88, -7.16 GSE)

windlib 2.0b

LZ version = v01

WIND/WAVES Summary Plot (Page 1) for 23-SEP-2010, DOY = 266

DAILY 2010-09-24 22:23:06
 Re = 228.81 (209.78, 91.13, -6.62 GSE)



```

RAD2
Antenna Ey .....
Mode LIN(1) .....
SUM/SEP SEP .....
Toggle OFF .....

RAD1
Antenna Ex .....
Mode LIS(2,4) .....
SUM/SEP SUM .....
Toggle OFF .....

TNR
Antenna ExEy .....
Mode A-32 .....
Sweep ACE .....
  
```