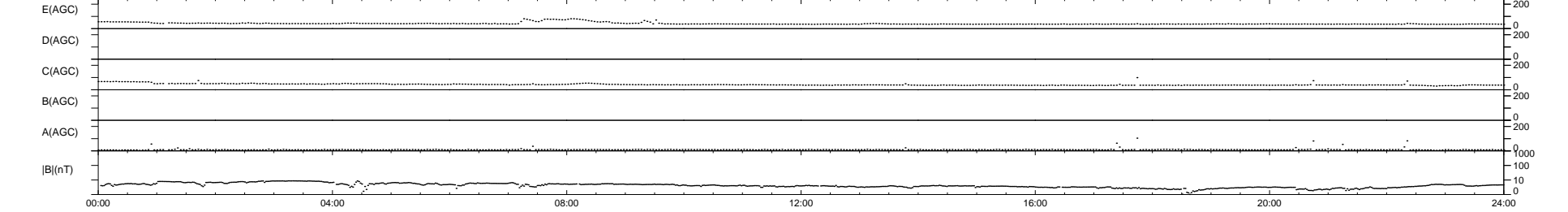
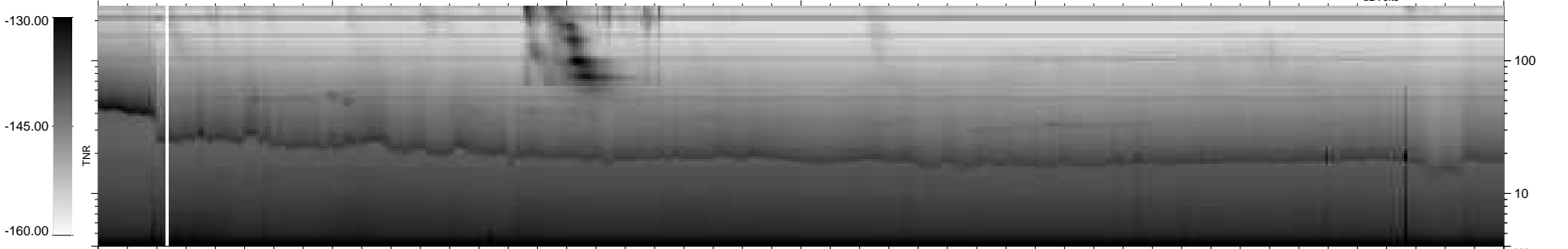
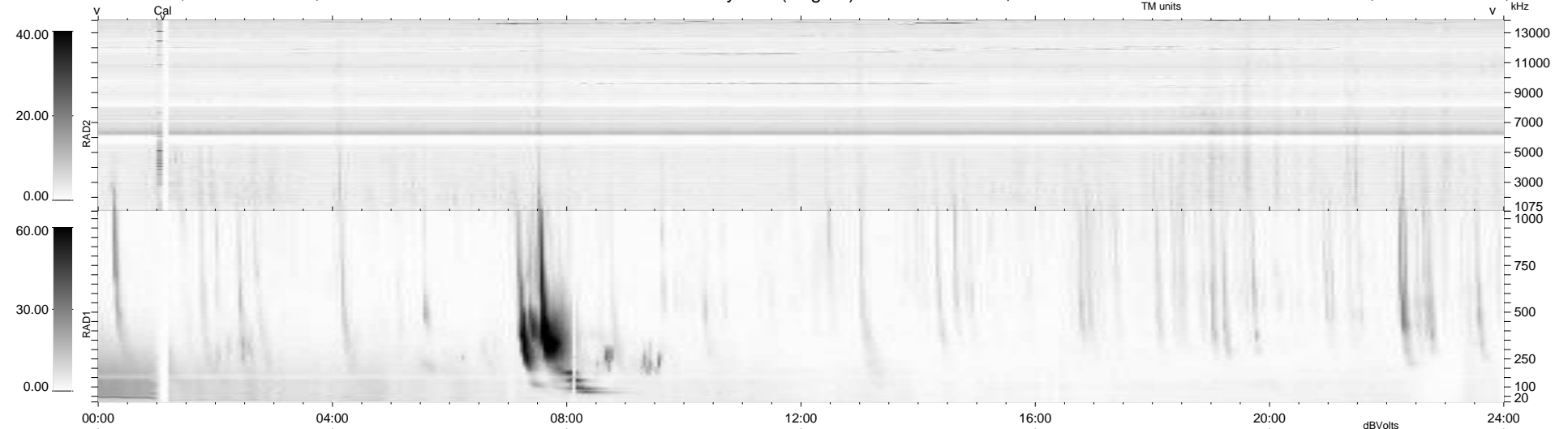


6 bad + 933 good MF/939MF projected (99%) - 0 missing MFs
 Avg interval = 180 secs
 Re = 225.34 (207.70, 86.96, -8.81 GSE)

windlib 2.0b LZ version = v01
 DAILY 2010-09-22 20:23:08
 Re = 226.47 (208.33, 88.46, -8.07 GSE)

WIND/WAVES Summary Plot (Page 1) for 21-SEP-2010, DOY = 264



RAD2
 Antenna Ey
 Mode LIN(1)
 SUM/SEP SEP
 Toggle OFF
 RAD1
 Antenna Ex
 Mode LIS(2,4)
 SUM/SEP SUM
 Toggle OFF
 TNR
 Antenna ExEy
 Mode A-32
 Sweep ACE