

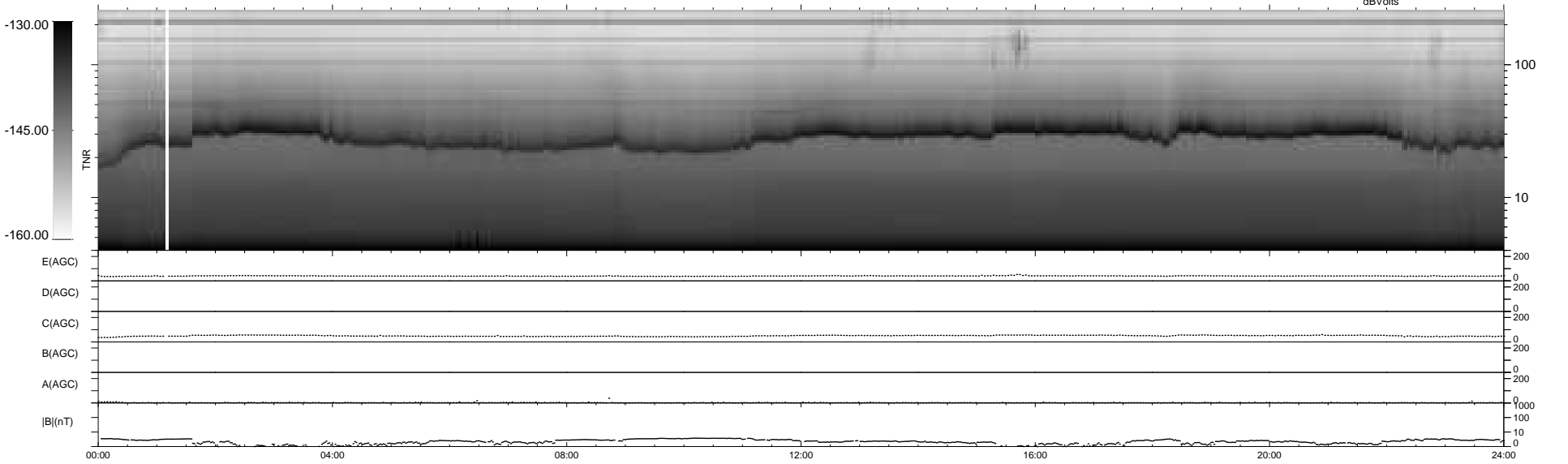
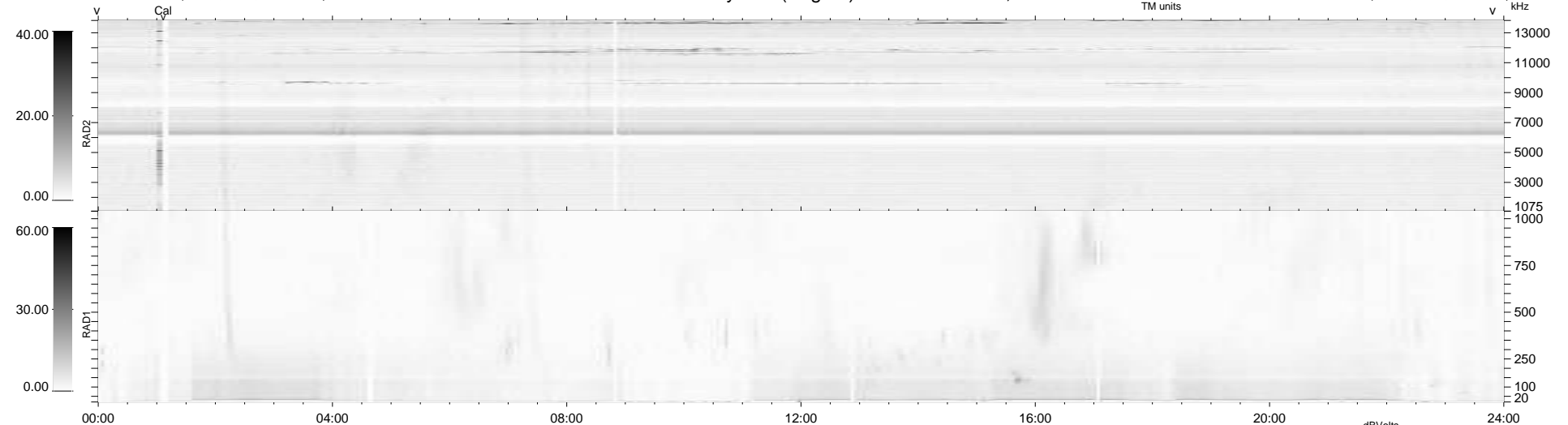
16 bad + 923 good MF/939MF projected (98%) - 0 missing MFs
 Avg interval = 180 secs
 Re = 223.09 (206.60, 83.54, -10.25 GSE)

windlib 2.0b

LZ version = v01

WIND/WAVES Summary Plot (Page 1) for 19-SEP-2010, DOY = 262

DAILY 2010-09-20 11:23:06
 Re = 224.20 (207.12, 85.30, -9.54 GSE)



E(AGC)	0	200
D(AGC)	0	200
C(AGC)	0	200
B(AGC)	0	200
A(AGC)	0	200
B (nT)	0	1000

RAD2
 Antenna Ey
 Mode LIN(1)
 SUM/SEP SEP
 Toggle OFF

RAD1
 Antenna Ex
 Mode LIS(2,4)
 SUM/SEP SUM
 Toggle OFF

TNR
 Antenna ExEy
 Mode A-32
 Sweep ACE