

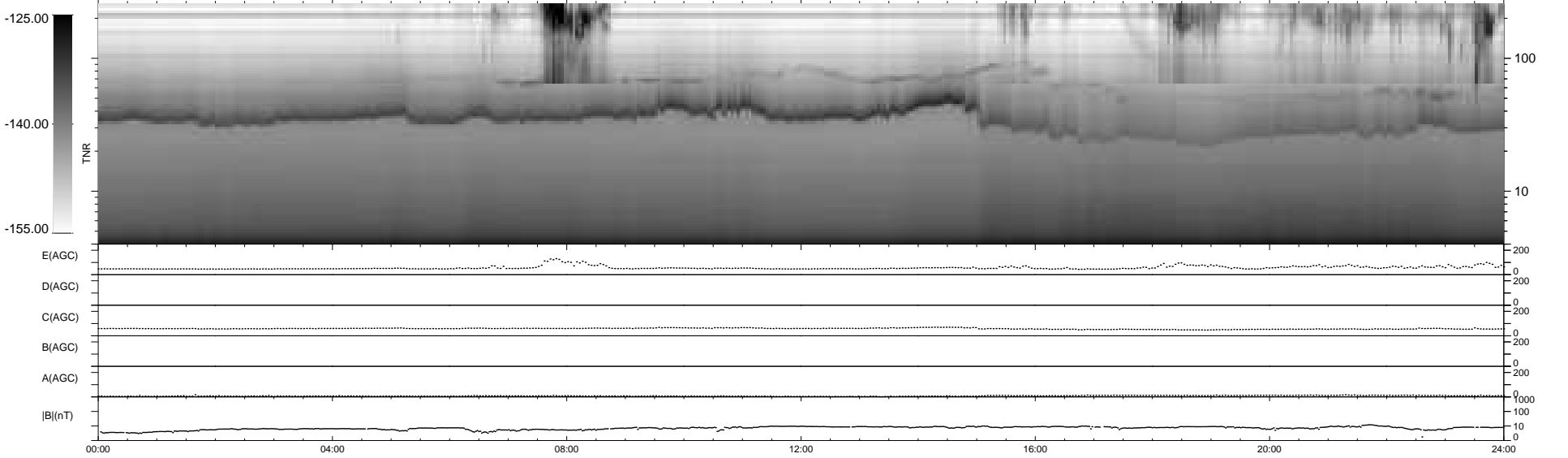
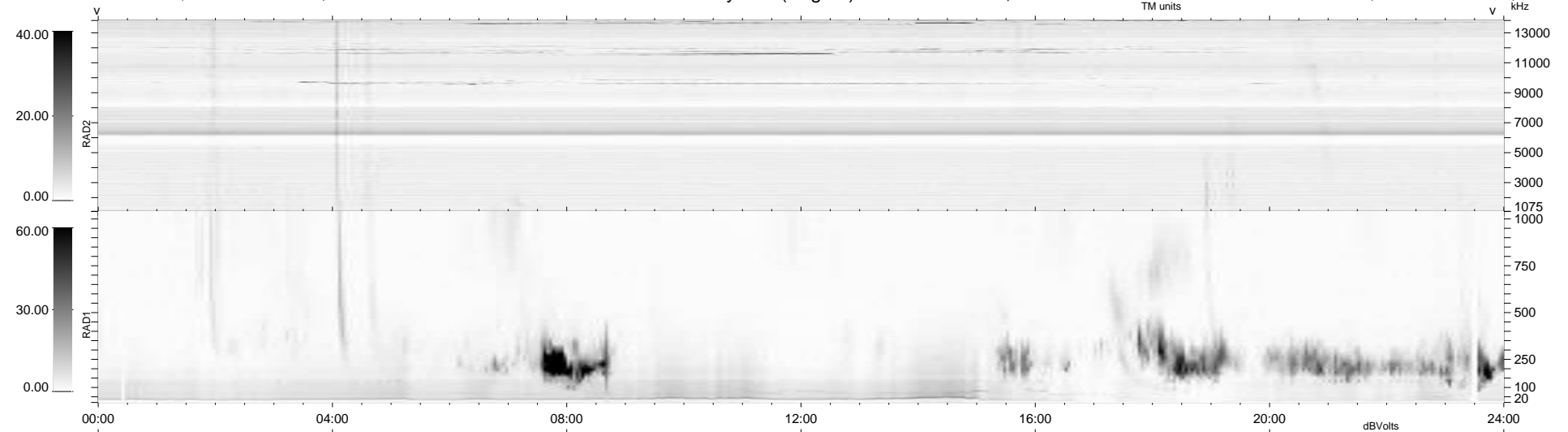
9 bad + 931 good MF/940MF projected (99%) - 0 missing MFs
 Avg interval = 180 secs
 Re = - 217.65 (204.71, 72.68, -13.61 GSE)

windlib 2.0b

LZ version = v02

WIND/WAVES Summary Plot (Page 1) for 14-SEP-2010, DOY = 257

DAILY 2010-09-20 10:23:11
 Re = 218.72 (205.01, 75.10, -12.97 GSE)



RAD2
 Antenna Ey
 Mode LIN(1)
 SUM/SEP SEP
 Toggle OFF
 RAD1
 Antenna Ex
 Mode LIS(2,4)
 SUM/SEP SUM
 Toggle OFF
 TNR
 Antenna ExEy
 Mode A-32
 Sweep ACE