

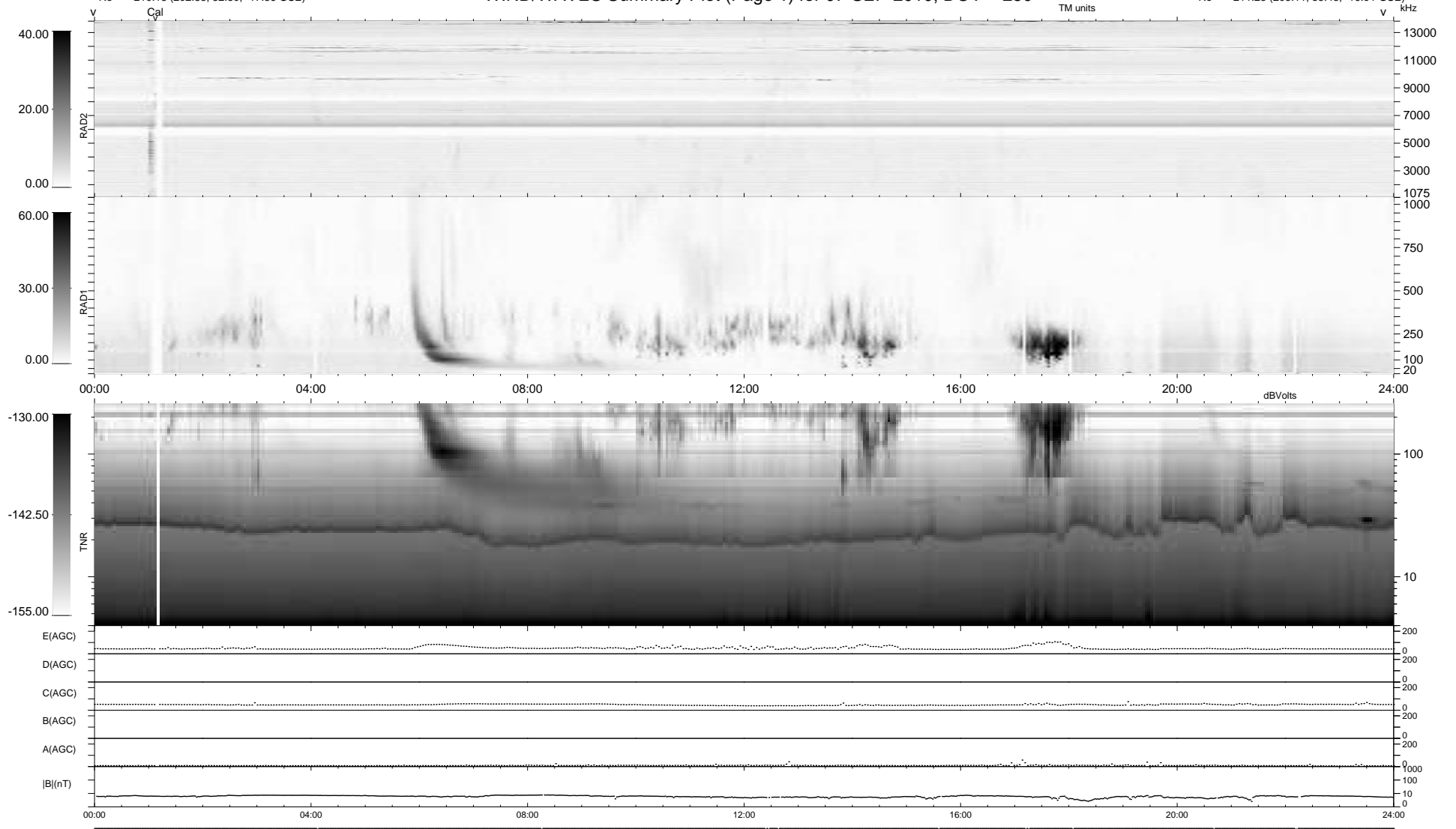
12 bad + 928 good MF/940MF projected (98%) - 0 missing MFs
 Avg interval = 180 secs
 Re = 210.18 (202.83, 52.30, -17.36 GSE)

windlib 2.0b

LZ version = v02

WIND/WAVES Summary Plot (Page 1) for 07-SEP-2010, DOY = 250

DAILY 2010-09-10 10:23:10
 Re = 211.23 (203.11, 55.48, -16.91 GSE)



RAD2
 Antenna Ey
 Mode LIN(1)
 SUM/SEP SEP
 Toggle OFF
 RAD1
 Antenna Ex
 Mode LIS(2,4)
 SUM/SEP SUM
 Toggle OFF
 TNR
 Antenna ExEy
 Mode A-32
 Sweep ACE