

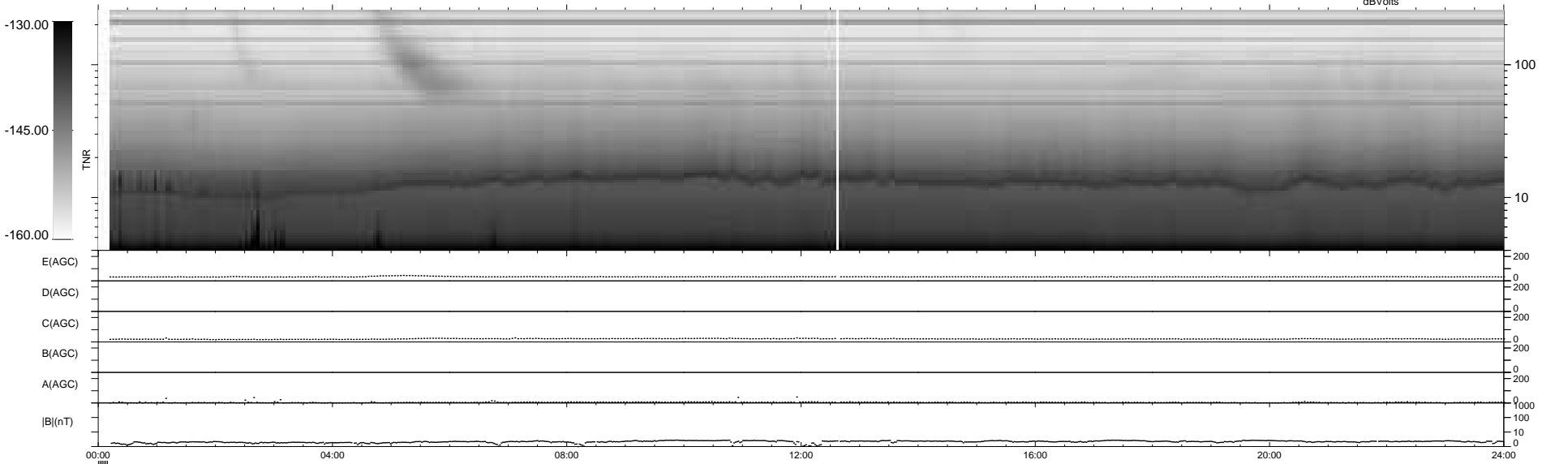
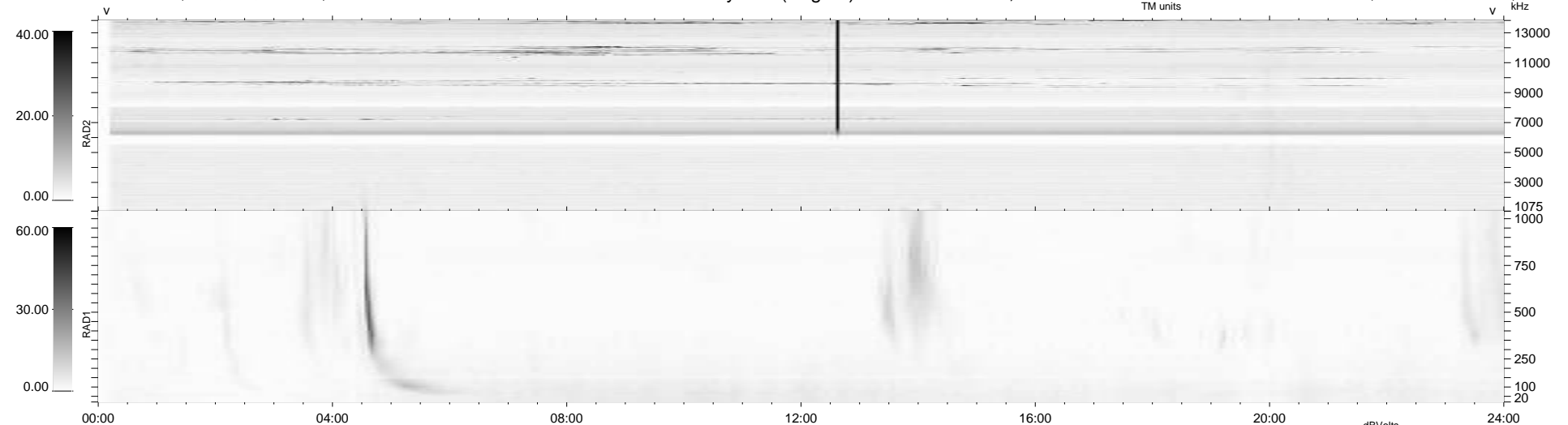
6 bad + 926 good MF/939MF projected (98%) - 7 missing MFs
Avg interval = 180 secs
Re = 202.65 (200.47, 21.76, -20.11 GSE)

windlib 2.0b

LZ version = v02

WIND/WAVES Summary Plot (Page 1) for 29-AUG-2010, DOY = 241

DAILY 2010-09-21 16:23:06
Re = 203.20 (200.65, 25.19, -19.92 GSE)



RAD2 Antenna Mode SUM/SEP Toggle
RAD1 Antenna Mode SUM/SEP Toggle
TNR Antenna Mode Sweep